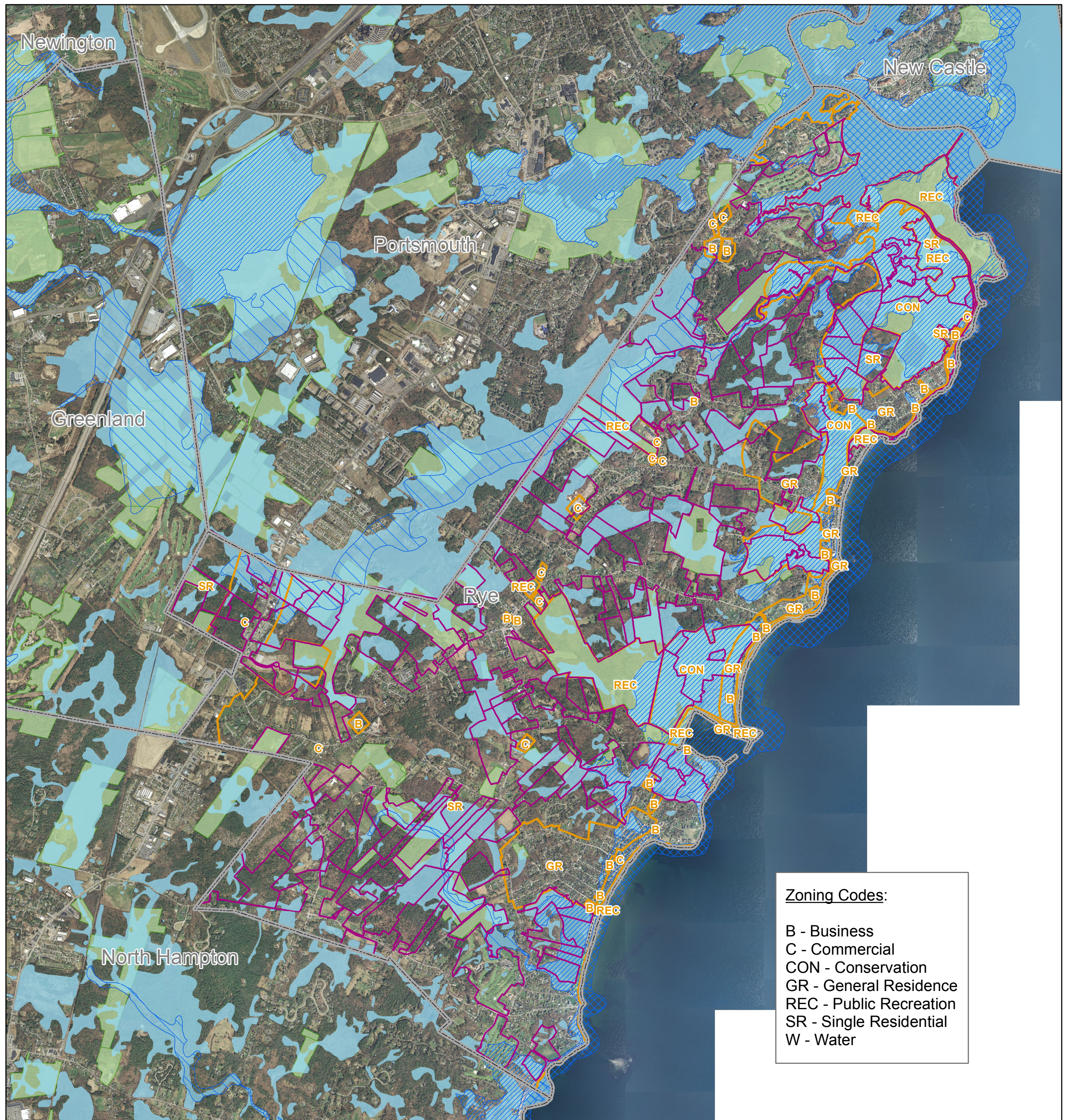


# Town of Rye, NH - Development Constraints



**Zoning Codes:**

- B - Business
- C - Commercial
- CON - Conservation
- GR - General Residence
- REC - Public Recreation
- SR - Single Residential
- W - Water

- Town Boundaries
- Large Parcels (10+ Acres)
- Zoning Districts (2014)
- Wetlands/Surface Water
- Conservation/Public Lands

- Effective Flood Zones (2005)**
- A
  - AE; AO
  - VE

Data Sources:  
 All data retrieved from the GRANIT database,  
 Complete metadata/documentation is available  
 on the project web site - [www.granit.unh.edu](http://www.granit.unh.edu)

Data are intended for planning purposes only, and  
 should not be used for legal or site-specific determinations.

Map produced by: GRANIT, University of New Hampshire  
 August, 2015