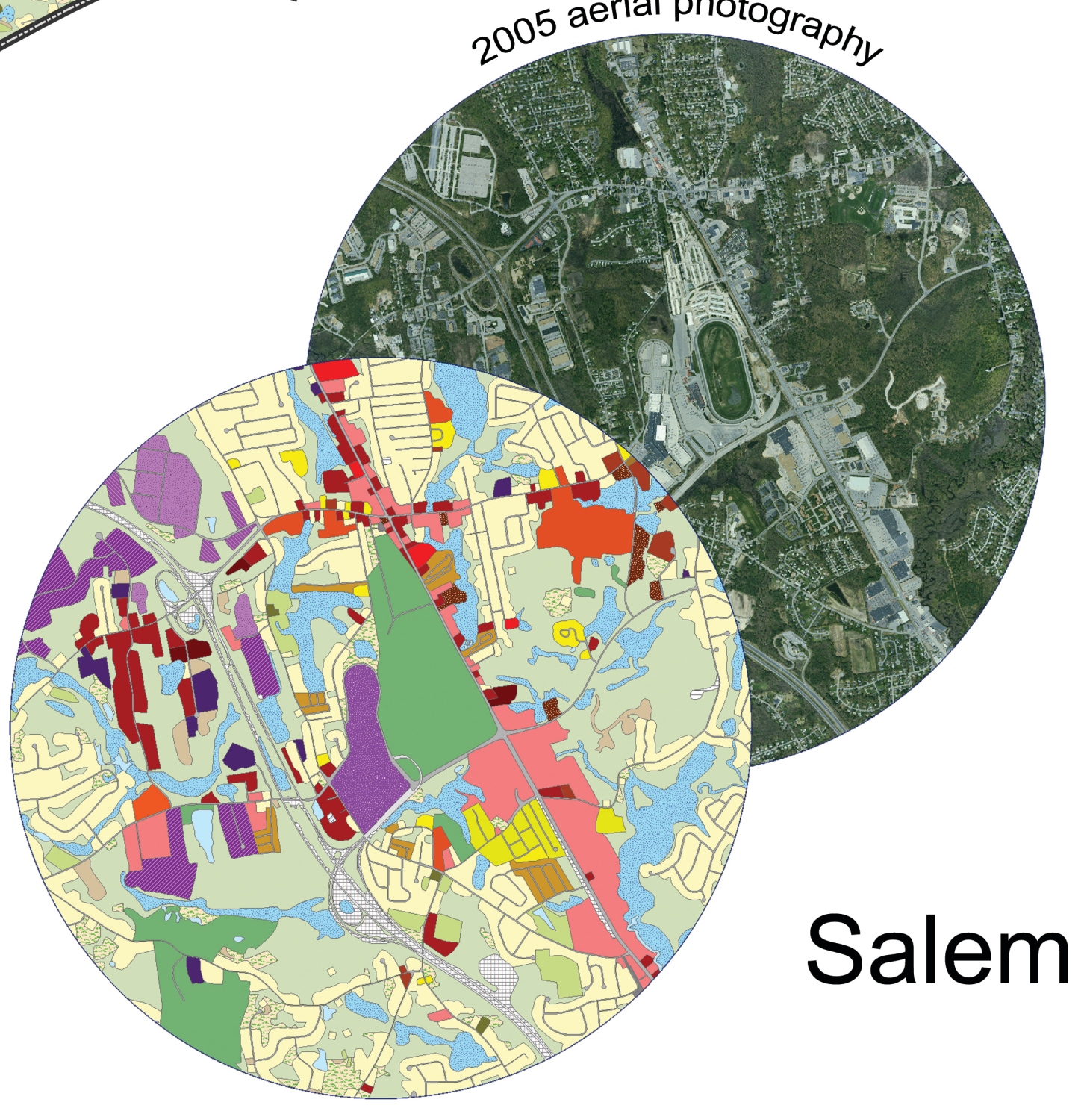
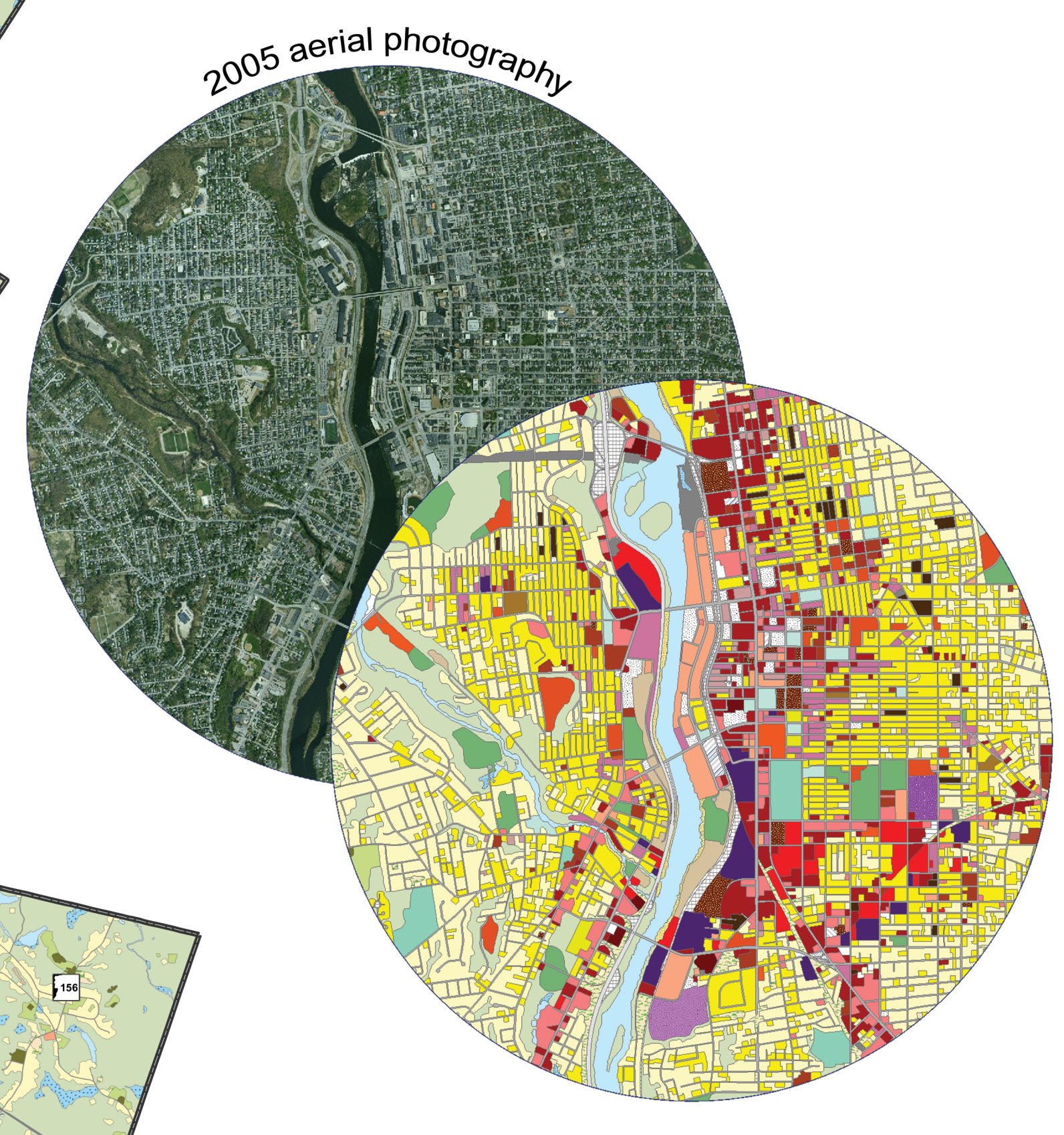
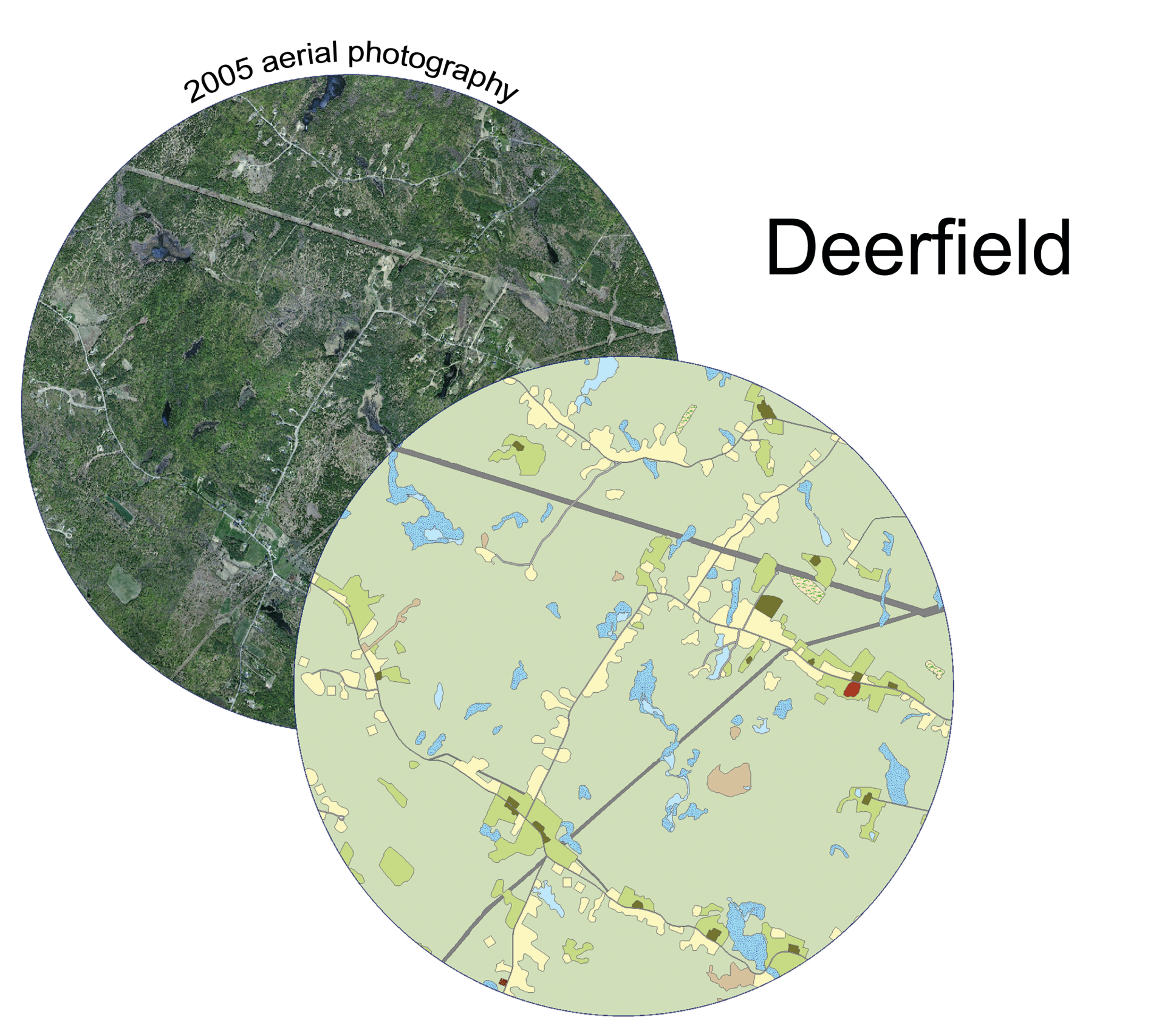
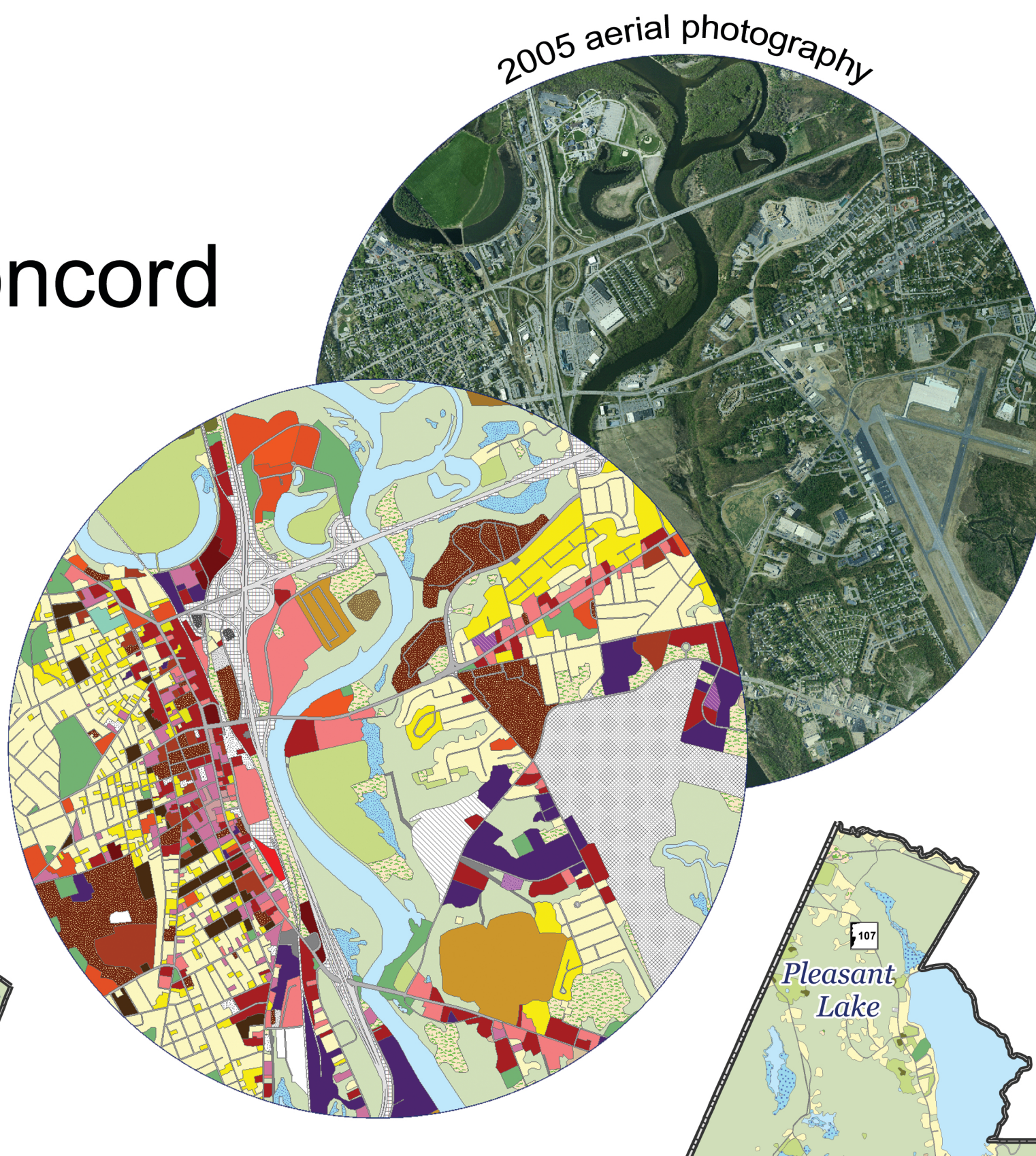
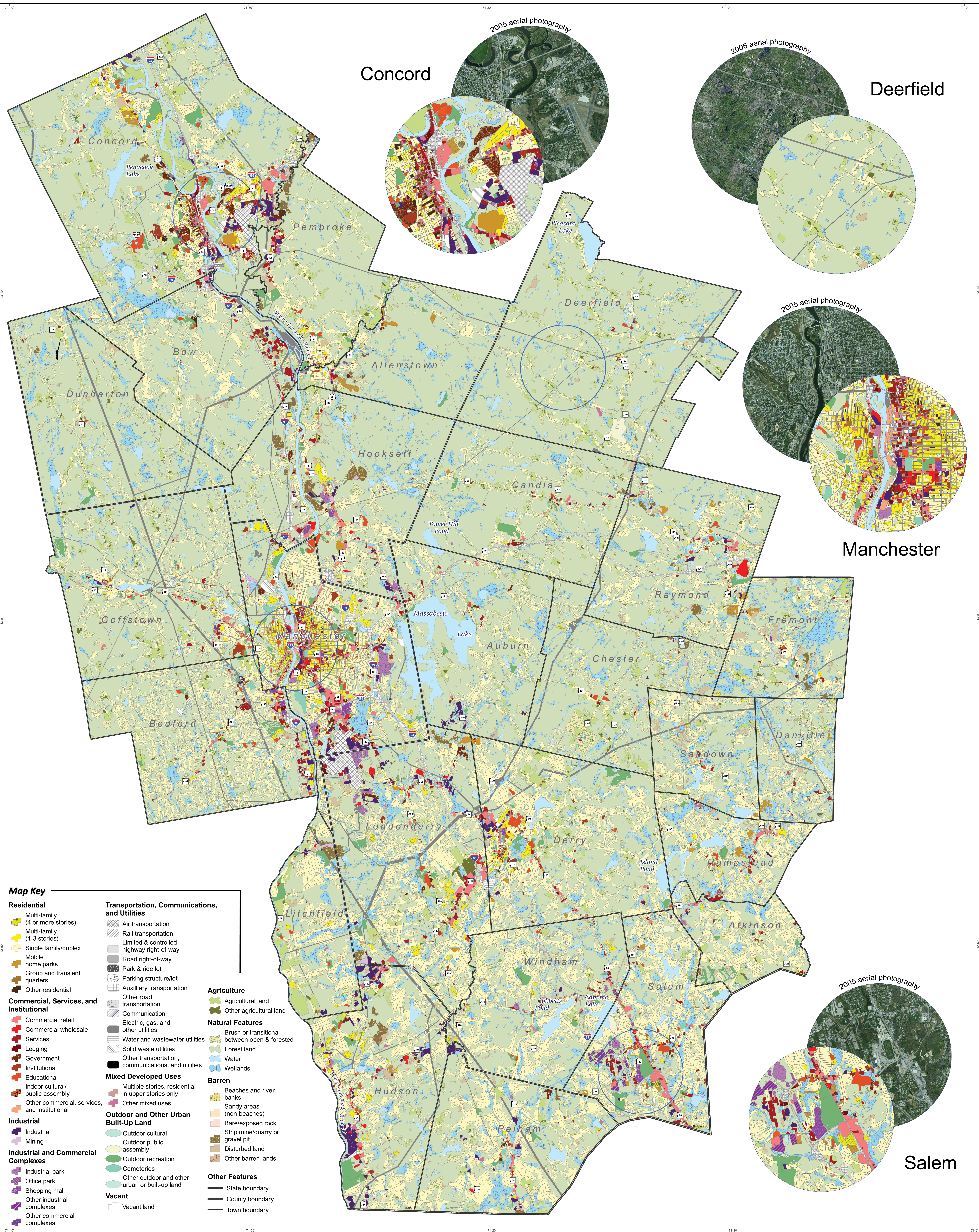


# I-93 Reconstruction Project: COMMUNITY TECHNICAL ASSISTANCE PROGRAM LAND USE/LAND COVER



**Map Key**

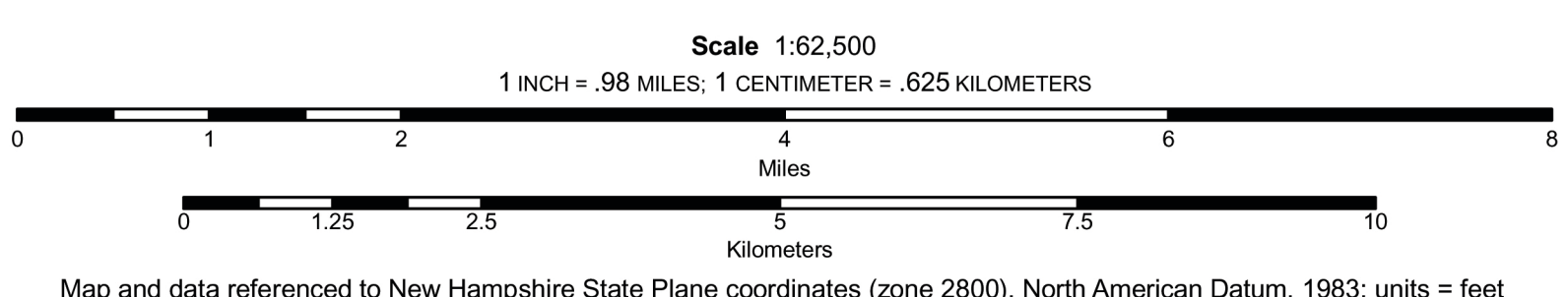
<p><b>Residential</b></p> <ul style="list-style-type: none"> <li>Multi-family (4 or more stories)</li> <li>Multi-family (1-3 stories)</li> <li>Single family/duplex</li> <li>Mobile home parks</li> <li>Group and transient quarters</li> <li>Other residential</li> </ul> <p><b>Commercial, Services, and Institutional</b></p> <ul style="list-style-type: none"> <li>Commercial retail</li> <li>Commercial wholesale</li> <li>Services</li> <li>Lodging</li> <li>Government</li> <li>Institutional</li> <li>Educational</li> <li>Indoor cultural/public assembly</li> <li>Other commercial, services, and institutional</li> </ul> <p><b>Industrial</b></p> <ul style="list-style-type: none"> <li>Industrial</li> <li>Mining</li> </ul> <p><b>Industrial and Commercial Complexes</b></p> <ul style="list-style-type: none"> <li>Industrial park</li> <li>Office park</li> <li>Shopping mall</li> <li>Other industrial complexes</li> <li>Other commercial complexes</li> </ul>	<p><b>Transportation, Communications, and Utilities</b></p> <ul style="list-style-type: none"> <li>Air transportation</li> <li>Rail transportation</li> <li>Limited &amp; controlled highway right-of-way</li> <li>Road right-of-way</li> <li>Park &amp; ride lot</li> <li>Parking structure/lot</li> <li>Auxiliary transportation</li> <li>Other road transportation</li> <li>Communication</li> <li>Electric, gas, and other utilities</li> <li>Water and wastewater utilities</li> <li>Solid waste utilities</li> <li>Other transportation, communications, and utilities</li> </ul> <p><b>Mixed Developed Uses</b></p> <ul style="list-style-type: none"> <li>Multiple stories, residential in upper stories only</li> <li>Other mixed uses</li> </ul> <p><b>Outdoor and Other Urban Built-Up Land</b></p> <ul style="list-style-type: none"> <li>Outdoor cultural</li> <li>Outdoor public assembly</li> <li>Outdoor recreation</li> <li>Cemeteries</li> <li>Other outdoor and other urban or built-up land</li> </ul> <p><b>Vacant</b></p> <ul style="list-style-type: none"> <li>Vacant land</li> </ul>	<p><b>Agriculture</b></p> <ul style="list-style-type: none"> <li>Agricultural land</li> <li>Other agricultural land</li> </ul> <p><b>Natural Features</b></p> <ul style="list-style-type: none"> <li>Brush or transitional between open &amp; forested</li> <li>Forest land</li> <li>Water</li> <li>Wetlands</li> </ul> <p><b>Barren</b></p> <ul style="list-style-type: none"> <li>Beaches and river banks</li> <li>Sandy areas (non-beaches)</li> <li>Bare/exposed rock</li> <li>Strip mine/quarry or gravel pit</li> <li>Disturbed land</li> <li>Other barren lands</li> </ul> <p><b>Other Features</b></p> <ul style="list-style-type: none"> <li>State boundary</li> <li>County boundary</li> <li>Town boundary</li> </ul>
---	---	---



**Project Description:**  
This project represents a cooperative effort between the Central New Hampshire Regional Planning Commission (CNHRPC), Nashua Regional Planning Commission (NRPC), Rockingham Planning Commission (RPC), Southern New Hampshire Planning Commission (SNHPC), and the Complex Systems Research Center (CSRC), University of New Hampshire, to map land use/land cover for the 26 towns in the I-93 corridor. CSRC initiated the project by coordinating an effort to develop standards and protocols for the mapping activities. CSRC also provided training to planning commission staff in photo interpretation and delineation techniques. Each of the commissions was then responsible for mapping the land use/land cover for their constituent towns within the corridor. This was accomplished by screen digitizing land use/land cover polygons using 1-foot resolution, natural color aerial photography, acquired in April of 2005, as the background.

The four data sets were subsequently submitted to CSRC, where they were merged to form a final feature data set to comprise the 26 town region. CSRC was also responsible for examination of the overall quality of the data. This step was limited to checking that all polygon coding met the project coding domain while also ensuring that the established topology rules were enforced.

The collaborative effort was funded by the New Hampshire Department of Transportation as part of the Community Technical Assistance Program for the I-93 Reconstruction Project.



**Data sources:**

- Land use/land cover from the CTAP land use/land cover data set, version 1.0 (preliminary), July, 2007
- Political boundaries from the GRANIT database, August, 2007 version

**Map by:**  
Complex Systems Research Center  
Institute for the Study of Earth, Oceans and Space  
University of New Hampshire, Durham  
October, 2007

