

*New Hampshire*  
**DOT**  
*Department of Transportation*

Maps and data sets are not guaranteed to be free from errors and omissions. Data is in a constant state of update and correction by various groups and agencies. Information displayed on this map is the best available at the time of publication.

# 2022 Nodal Reference Bookmap

## LEGEND



NHDOT will accept crash locations based on the State of NH Uniform Police Traffic Accident Report.

Crash occurred on:

**Option 1**     Street Address  
                   123 Main Street

**Option 2**     Route No and/or     Distance from             NESW             Intesecting Road, Bridge,  
                   Street name             Intersecting Street                                     Town/County line  
                   Main Street                     500                     E                     Oak Street

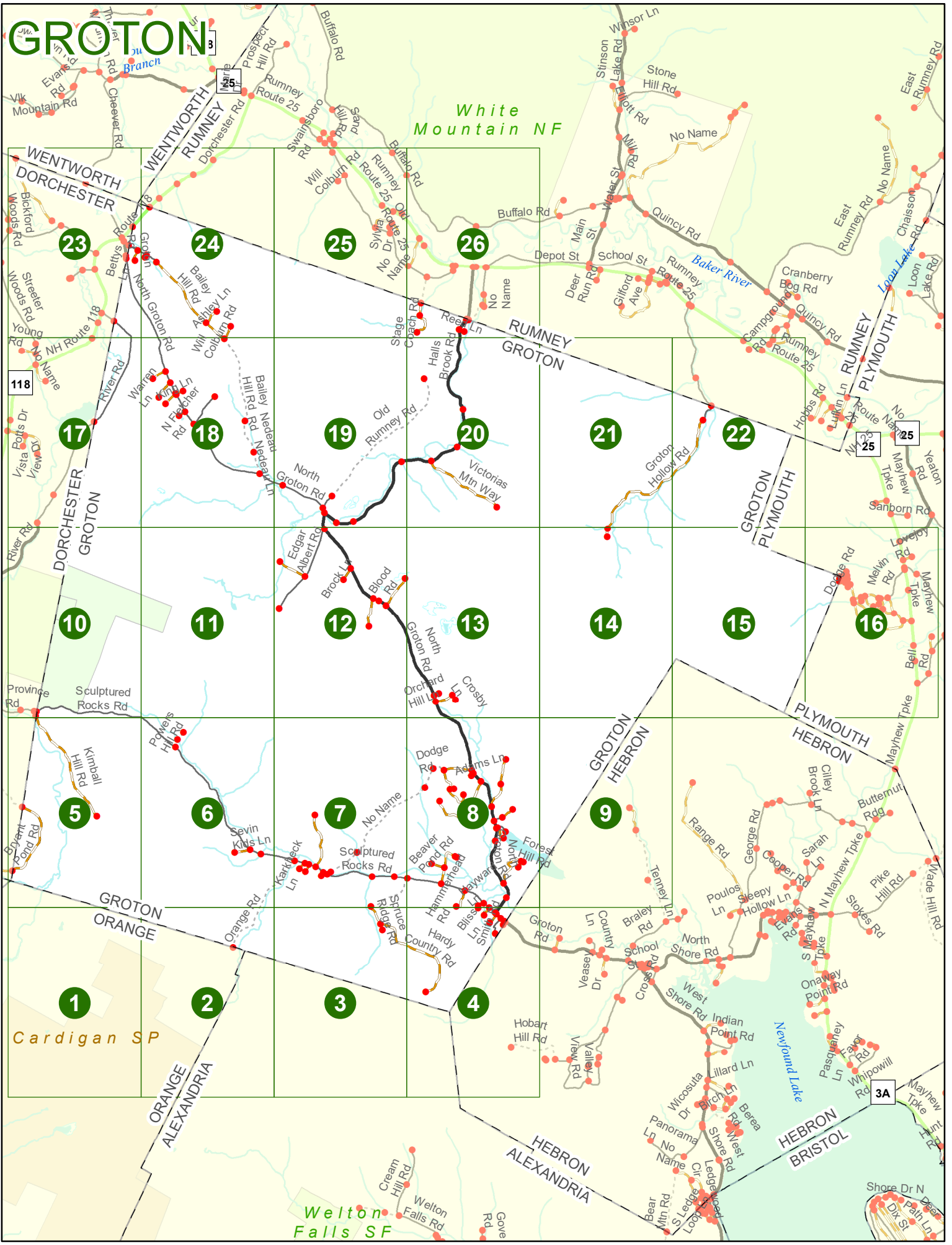
**Option 3**     First Node                     Distance from First Node                     Second Node  
                   515                                     212                                     632

**Option 4**     Route No and/or             Mile Marker on Interstate Only     NESW             Mile (Marker)  
                   Street name  
                   189S                                     700 feet                     S                     36.8

**Option 3 – Example**

Street Name                     Loudon Road  
First Node                             803  
Distance from First Node             318 Ft  
Second Node                             813





# GROTON

Match to Page

5

GROTON  
ORANGE

0

Match to Page

1

Match to Page

2

*Cardigan SP*

0 500 1,000 2,000 Feet

Match to Page

0

# GROTON

Match to Page 1

Match to Page 3

## 2

GROTON  
ORANGE

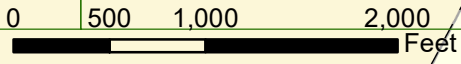
Orange Rd

6763

GROTON  
ALEXANDRIA

ORANGE  
ALEXANDRIA

*Cardigan SP*



Match to Page

7

# GROTON

0011

0109

0111

Spurce  
Ridge Rd

Hardy Country Rd

GROTON  
ALEXANDRIA

2

Match to Page

# 3

Match to Page

4

0 500 1,000 2,000 Feet

Match to Page

0

# GROTON

0108

Match to Page

0177

0103

0104

0003

0102

0195

0002

0001

6278

0101

0202

3

Match to Page

0110

GROTON  
ALEXANDRIA

# 4

GROTON  
HEBRON

HEBRON  
ALEXANDRIA

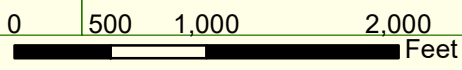
Match to Page

0

0059

Hobart Hill Rd

0289  
0069



Match to Page

0

# GROTON

# 5

Match to Page

0

0112

6757

6758

6709

DORCHESTER  
GROTON

Kimball Hill Rd

Bryant Pond Rd

Bryant Pond

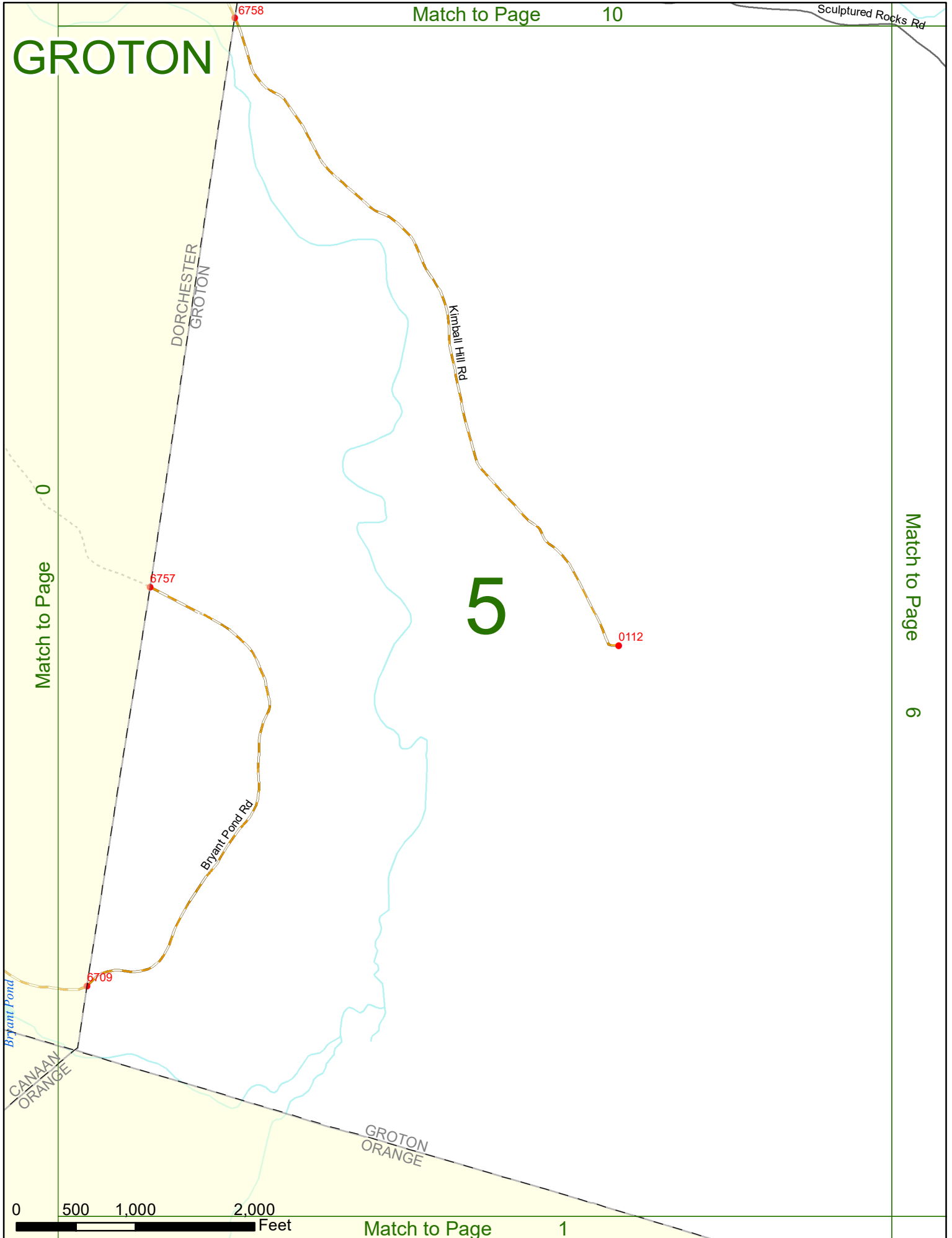
CANAAN  
ORANGE

GROTON  
ORANGE

0 500 1,000 2,000 Feet

Match to Page

1





# GROTON

Match to Page 5

Match to Page 7

# 6

Powers Hill Rd 0025

0194

0024

Sculptured Rocks Rd

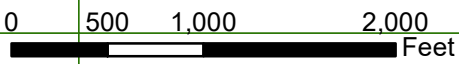
0113 Sevin Kids Ln

0114

0023

Sculptured Rocks Rd

Orange Rd



# GROTON

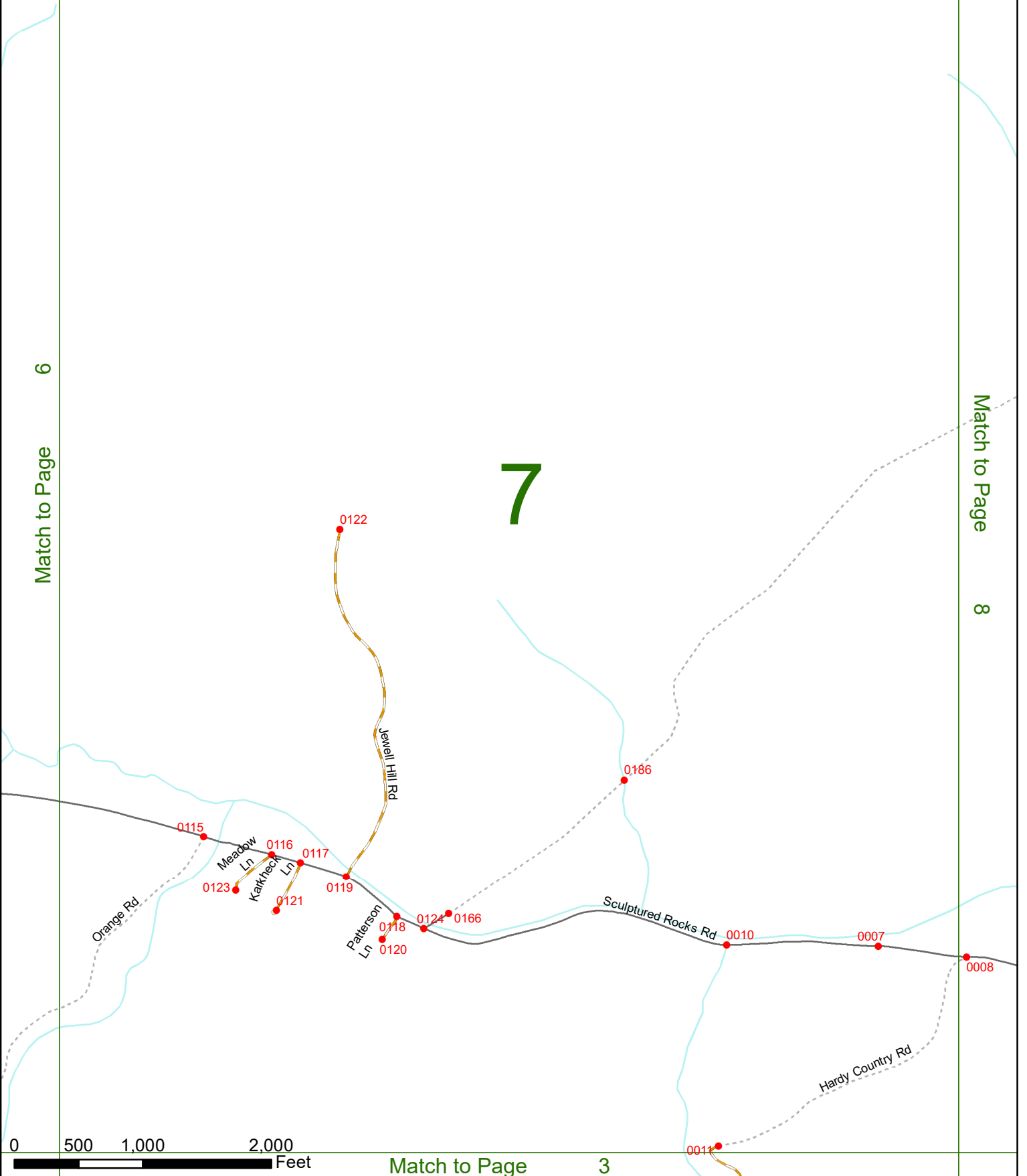
# 7

6

Match to Page

Match to Page

8



0 500 1,000 2,000 Feet

Match to Page

3

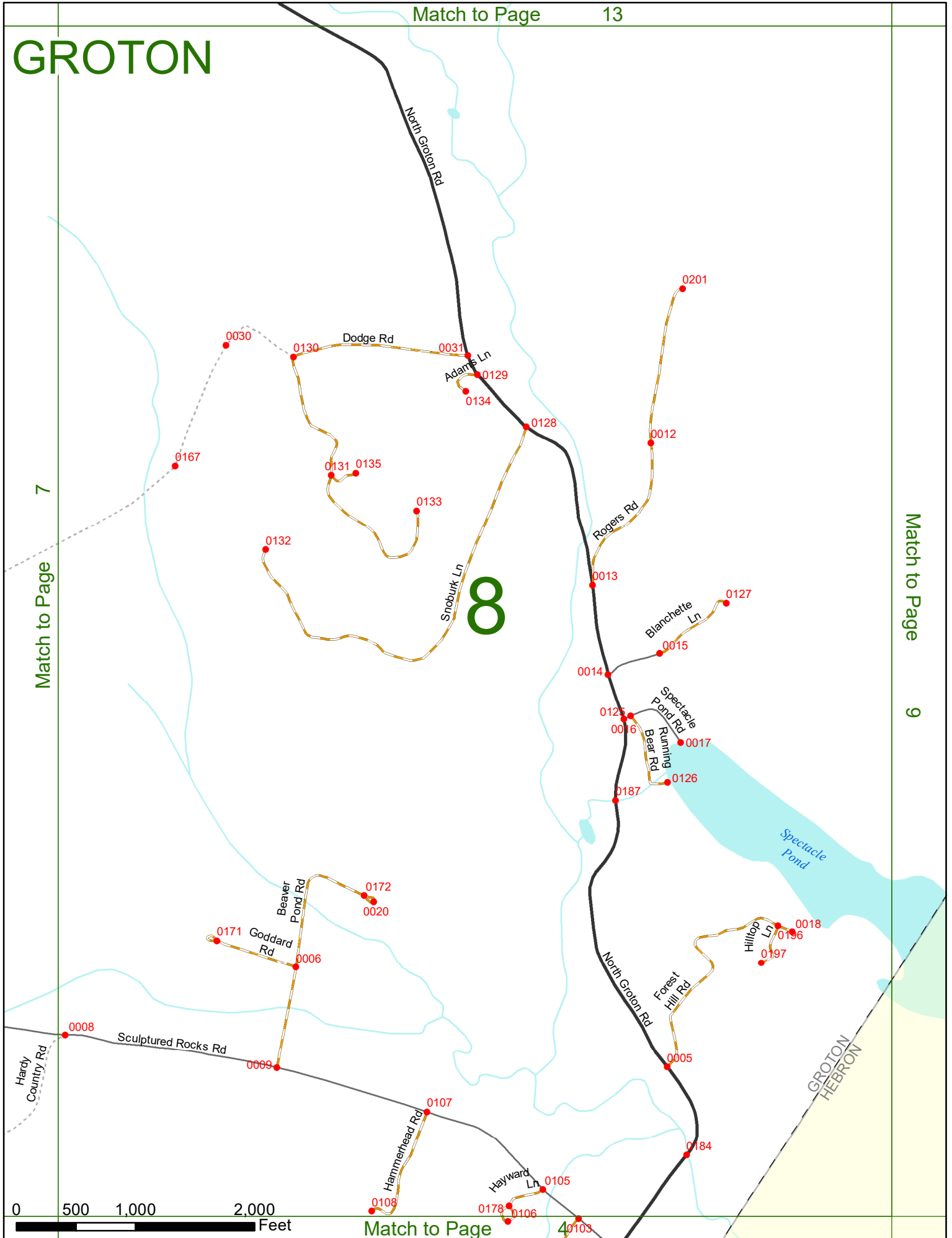
# GROTON

7

Match to Page

Match to Page

9



0 500 1,000 2,000 Feet

Match to Page

40103

GROTON  
HEBRON

# GROTON

Match to Page 8

GROTON  
HEBRON

# 9

Match to Page 0

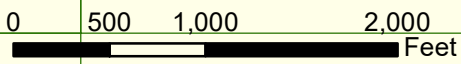
Spectacle  
Pond

0287

0130

Tenney Ln

0079



# GROTON

River Rd

DORCHESTER  
GROTON

0

Match to Page

# 10

Province  
Road SF

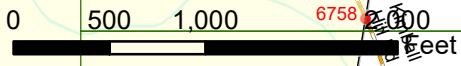
Match to Page

11

0001  
0165  
6758  
6110

Province Rd

Sculptured Rocks Rd



# GROTON

10

Match to Page

*Province  
Road SF*

# 11

0140

0034

Match to Page

12



# GROTON

Match to Page 19

Match to Page 11

Match to Page 13

# 12

0140

MacDonald Ln

0136

Edgar Albert Rd

North Groton Rd

0141

Brock Ln

0137

0138

0032

Giovanna Rd

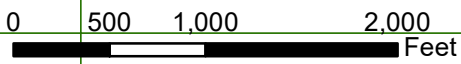
0139

Blood Rd

0143

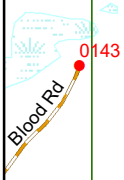
0142

North Groton Rd



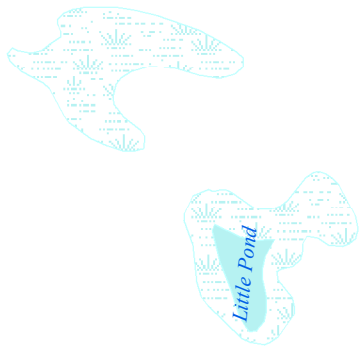
Match to Page 7

# GROTON



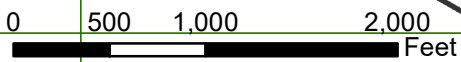
12

Match to Page



# 13

North Groton Rd



Match to Page

8

Match to Page

14



# GROTON

Match to Page 21

21

Groton  
Hollow Rd  
0043

13

Match to Page

# 14

Match to Page

15

GROTON  
HEBRON

0 500 1,000 2,000 Feet

Match to Page

9

Match to Page

22

# GROTON

PLYMOUTH  
GROTON

14

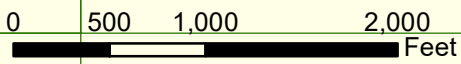
Match to Page

# 15

Match to Page

16

GROTON  
HEBRON



Match to Page

0

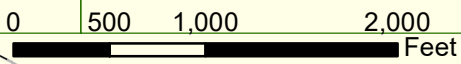
# GROTON

Match to Page 0

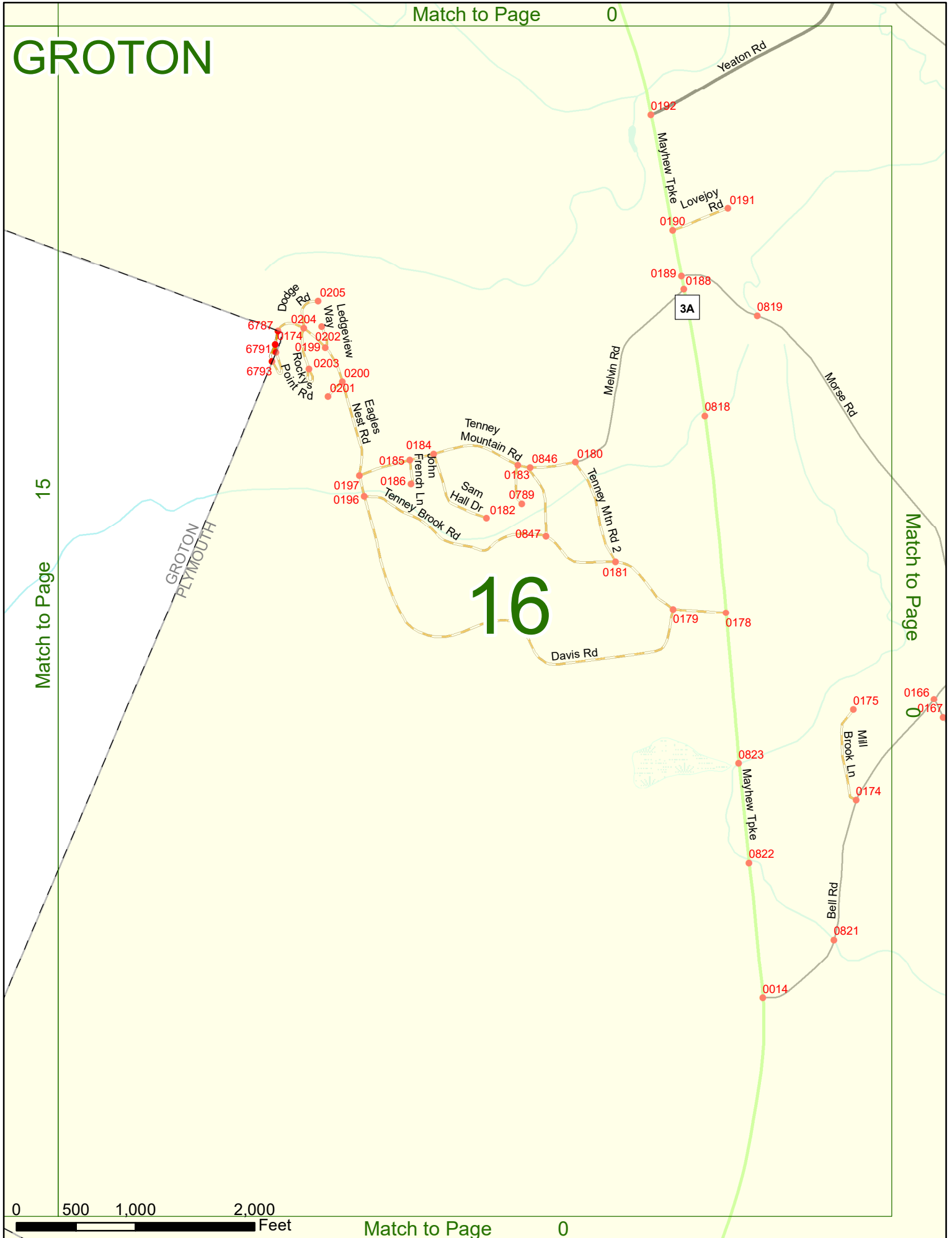
Match to Page 15

Match to Page 0

# 16

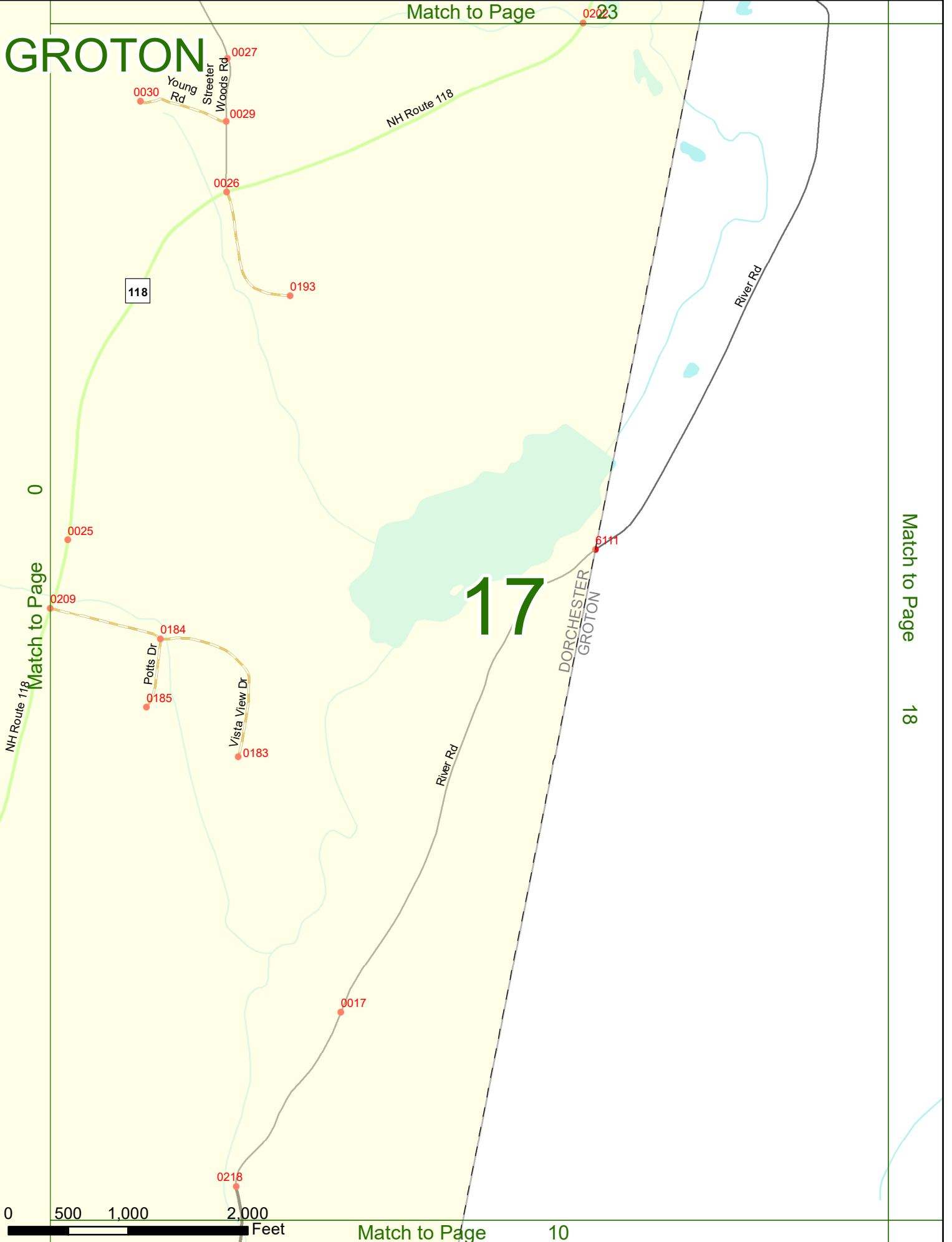


Match to Page 0



# GROTON

Match to Page 17



Match to Page

18

0 500 1,000 2,000 Feet

Match to Page 10

# GROTON

Match to Page 24

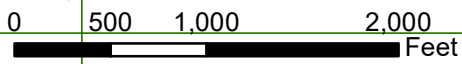
17

Match to Page

Match to Page

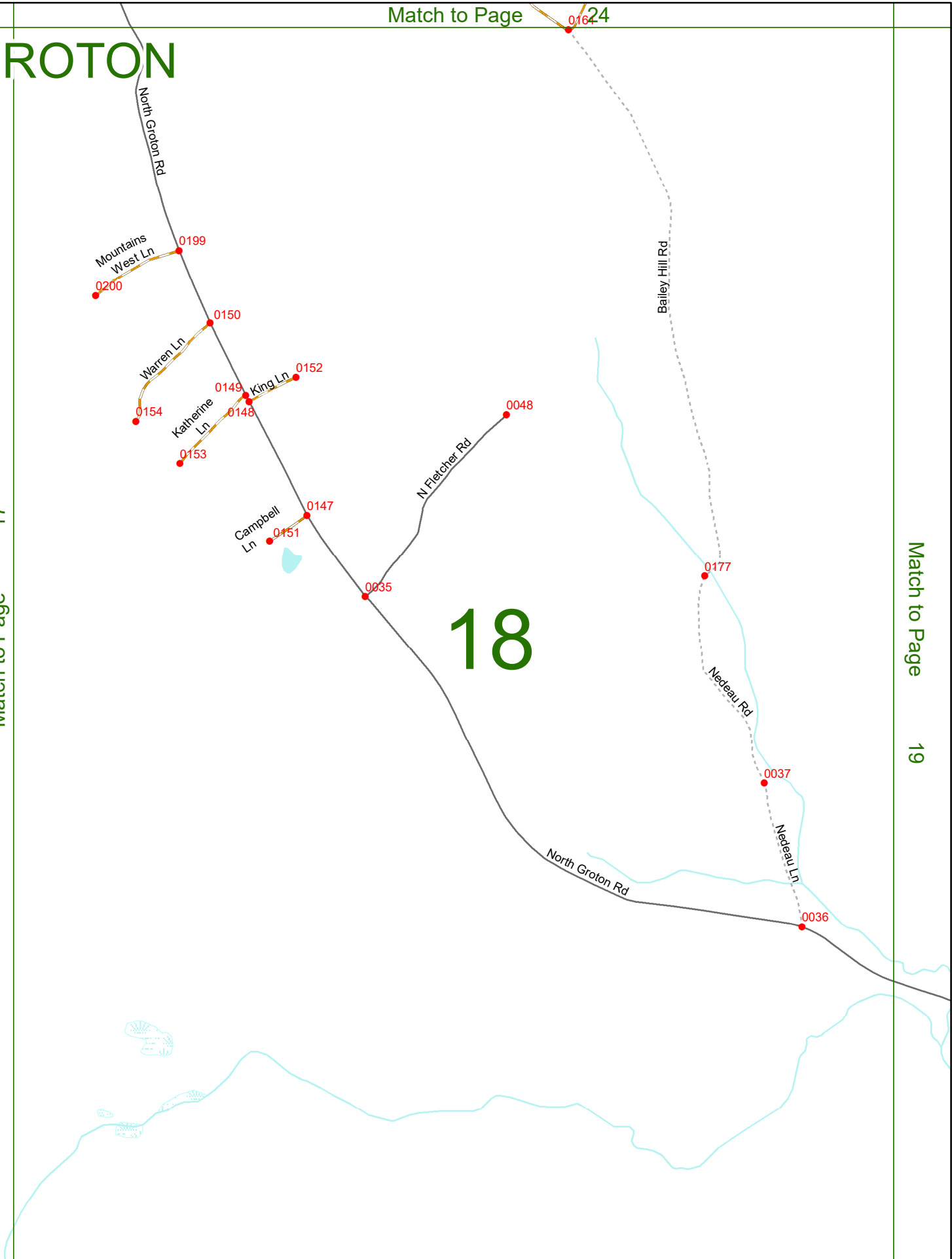
19

# 18



Match to Page

11



# GROTON

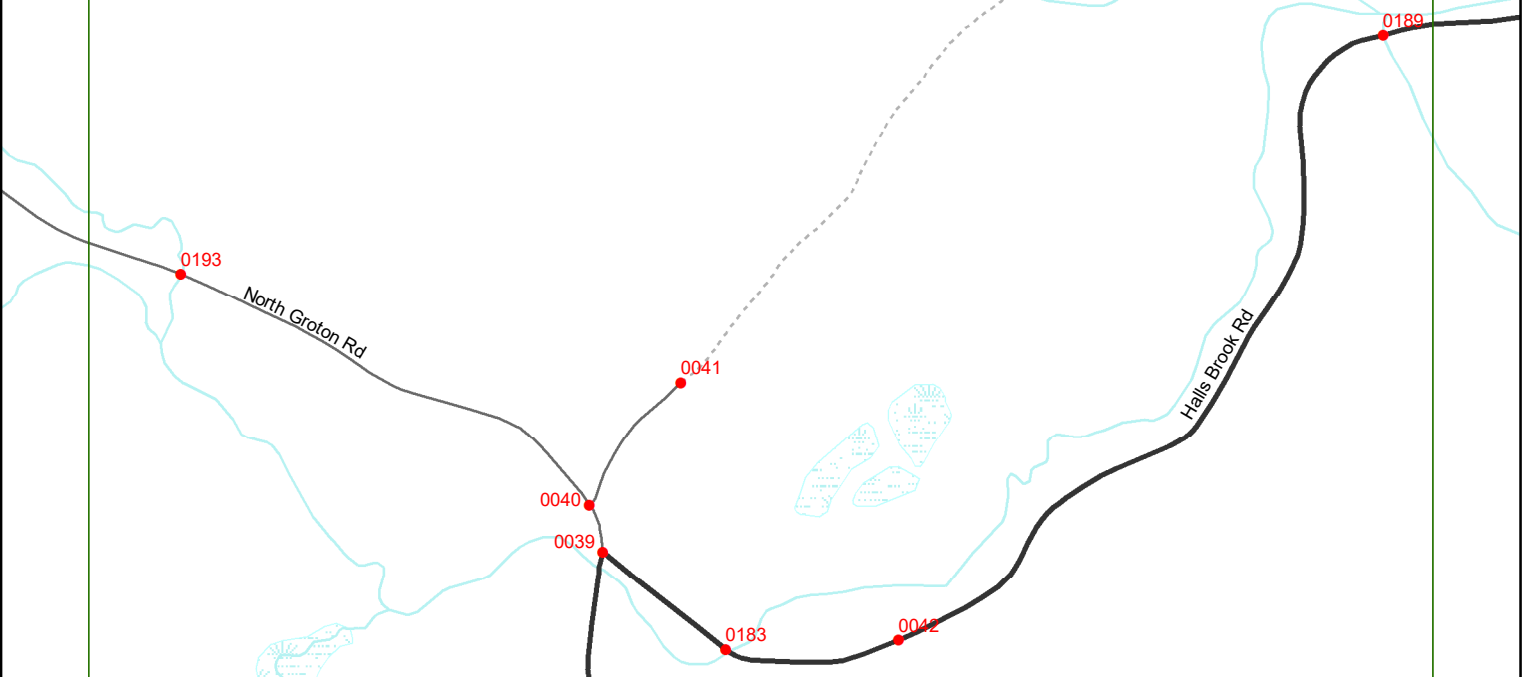
18

Match to Page

Match to Page

20

# 19



# GROTON

Match to Page 26

RUMNEY  
GROTON

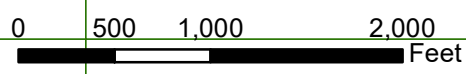
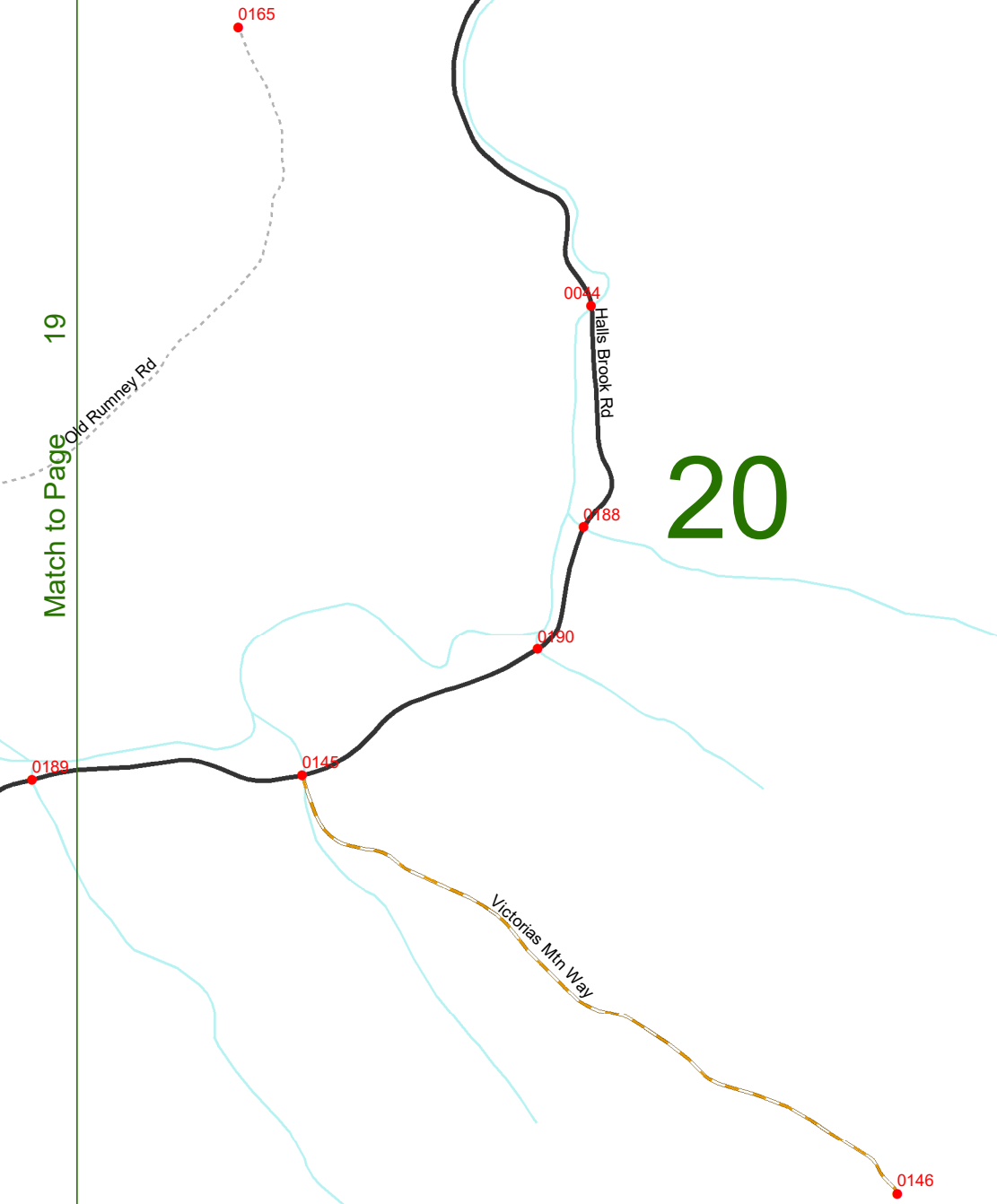
19

Match to Page

# 20

Match to Page

21



Match to Page 13

# GROTON

RUMNEY  
GROTON

20

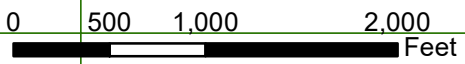
Match to Page

# 21

Match to Page

22

Groton Hollow Rd





# GROTON

Match to Page 0

Birchmew Ln

0012

0124

Campground Rd

Baker River

0003

0001

25

Rumney Route 25

0014

6277

RUMNEY GROTON

# 22

0168

Groton Hollow Rd

Hobbs

0197

Match to Page

RUMNEY PLYMOUTH

0

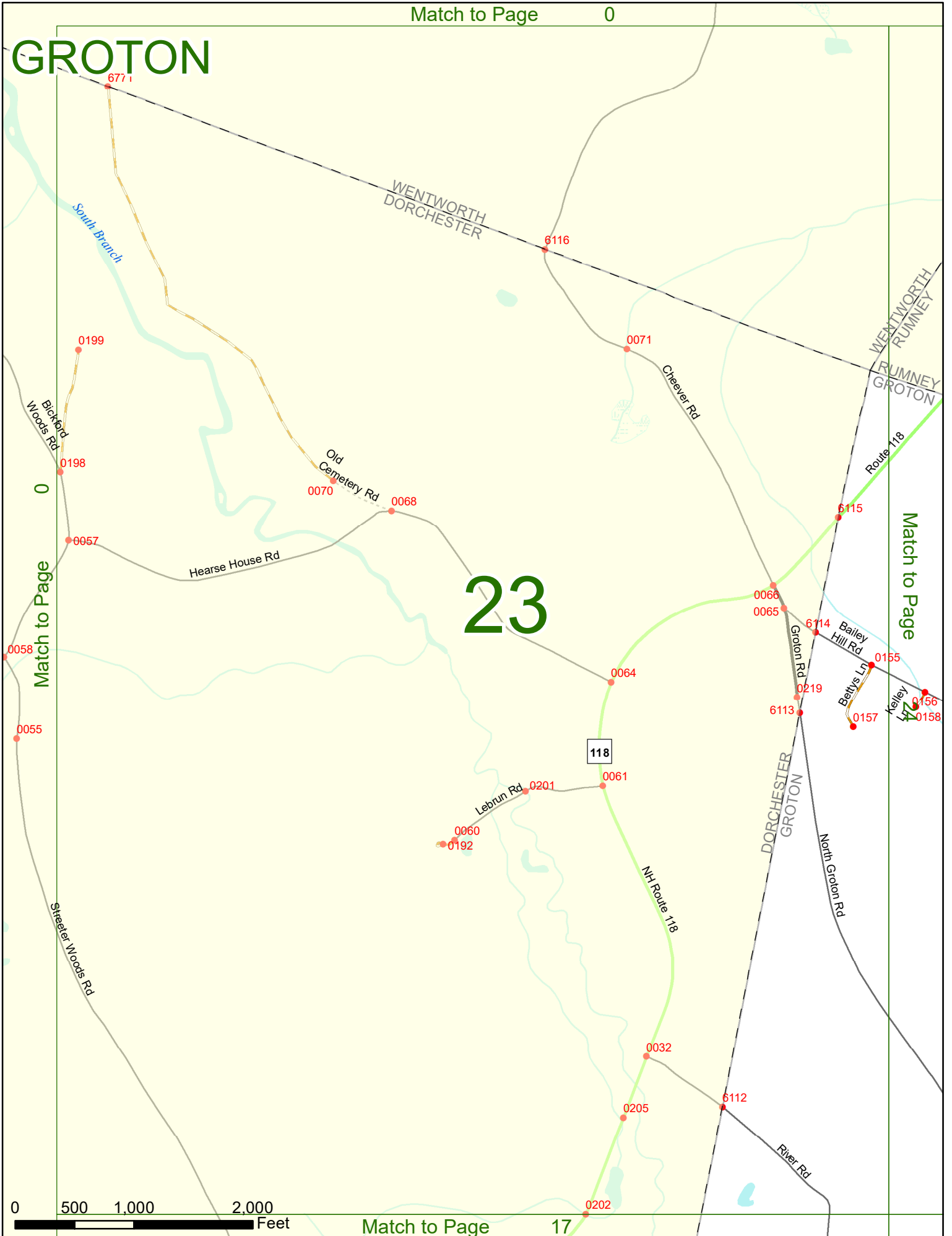
GROTON PLYMOUTH

0 500 1,000 2,000 Feet

Match to Page

15

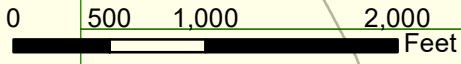
# GROTON



# 23

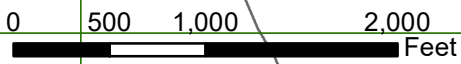
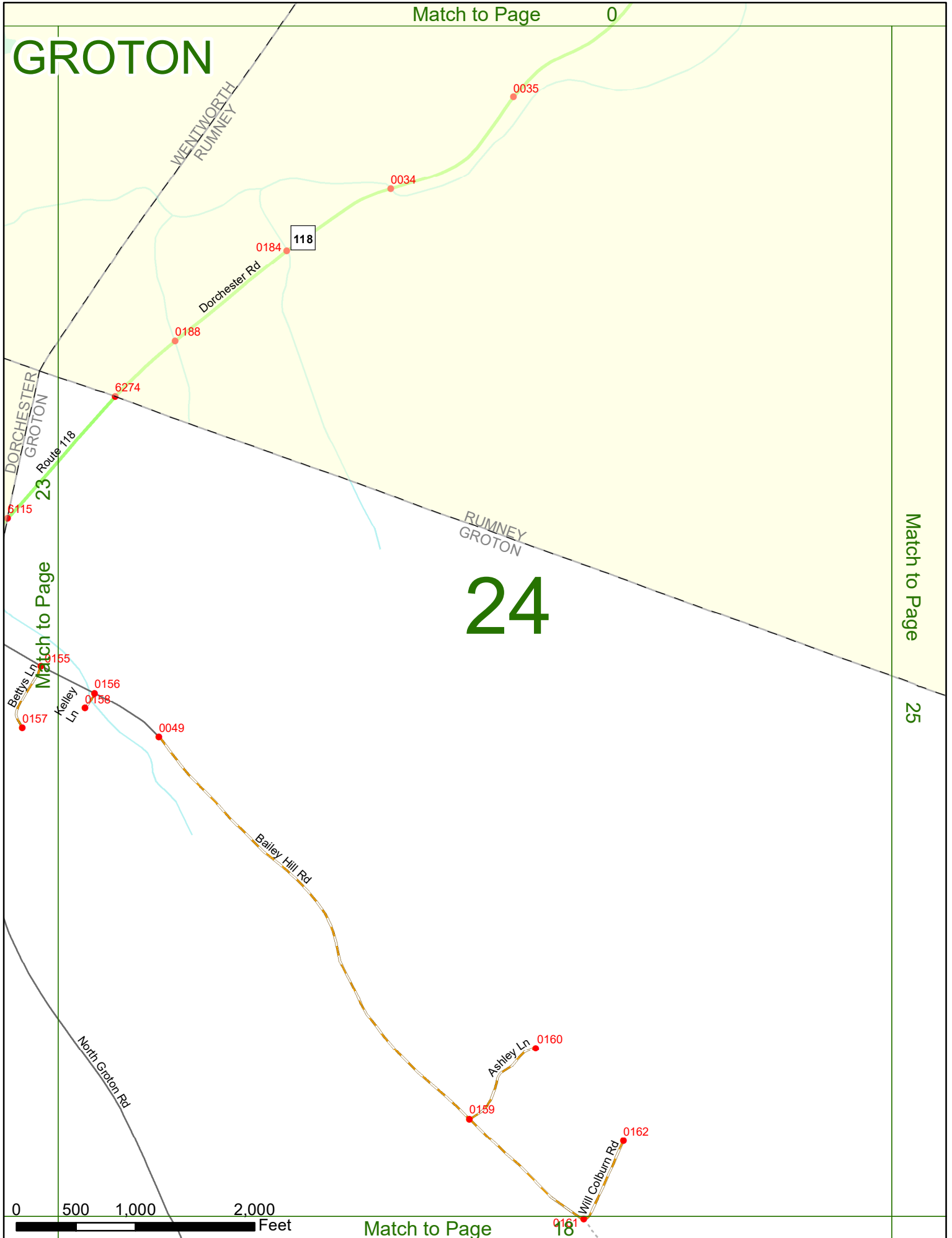
Match to Page 0

Match to Page 24



# GROTON

Match to Page 0



Match to Page 18

Match to Page

25

# GROTON

Match to Page 0

White Mountain NF

Buffalo Rd

Will Colburn Rd

Rumney Route 25

Baker River

Old Route 25

Sylvia Dr

# 25

RUMNEY GROTON

24

Match to Page

Match to Page

26

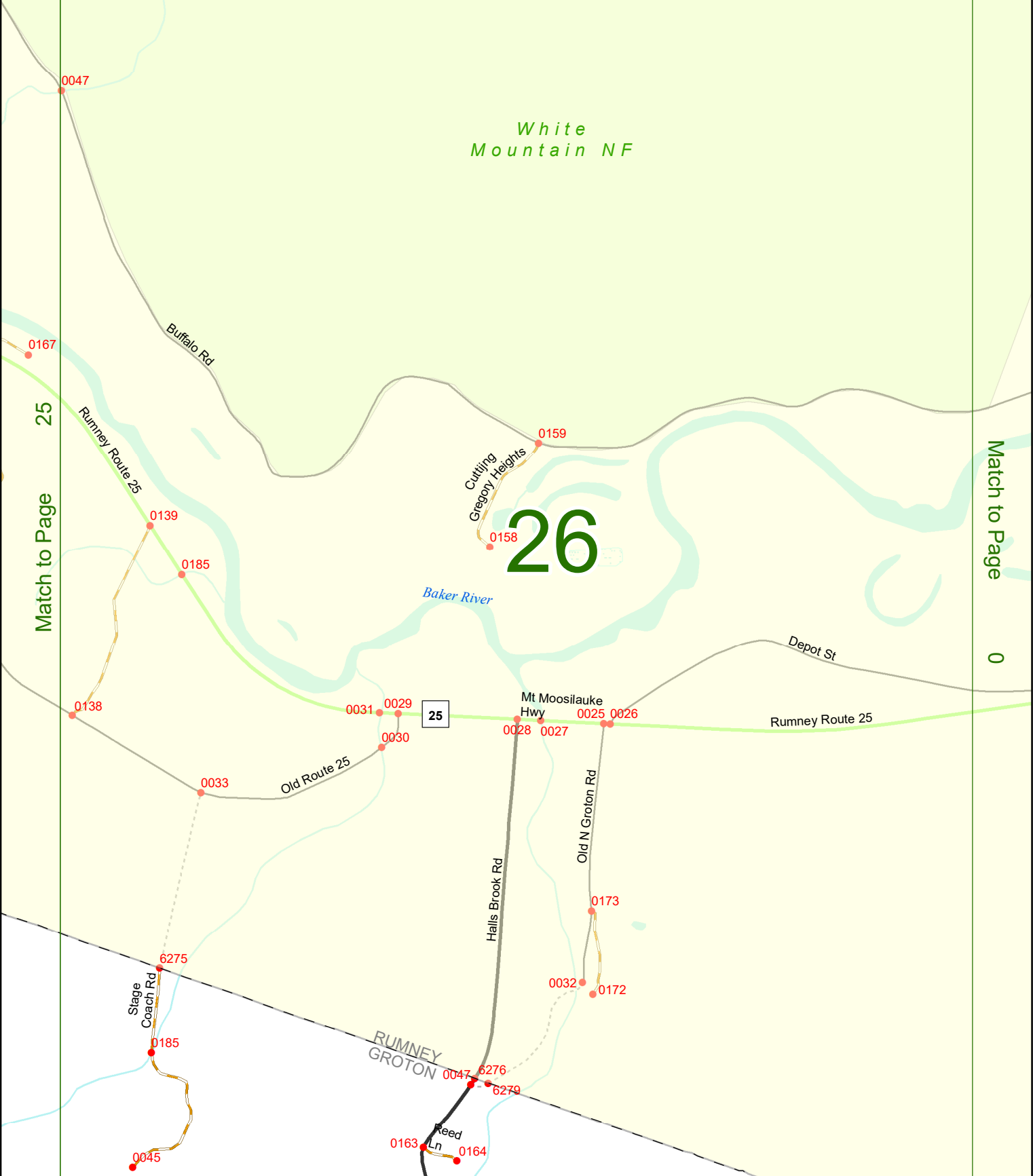
0138



Match to Page 19

# GROTON

White Mountain NF



# 26

25

Match to Page

Match to Page

0

