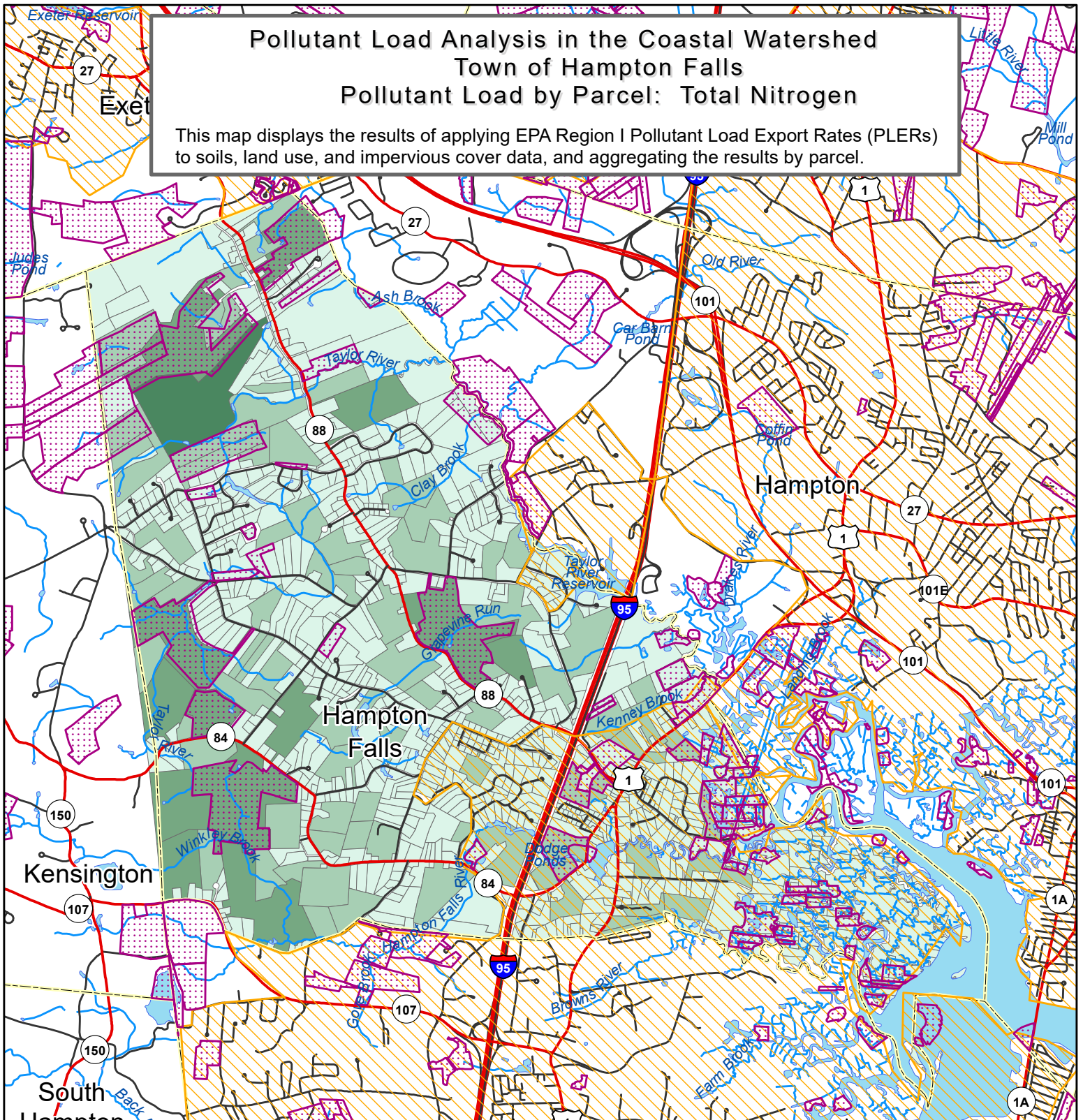
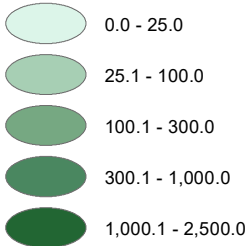


# Pollutant Load Analysis in the Coastal Watershed Town of Hampton Falls Pollutant Load by Parcel: Total Nitrogen

This map displays the results of applying EPA Region I Pollutant Load Export Rates (PLERs) to soils, land use, and impervious cover data, and aggregating the results by parcel.

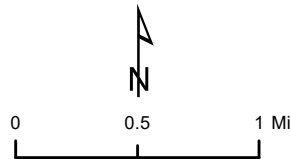


### Nitrogen (lbs/year)



### Base Map

- Conservation Lands
- Municipal Separate Storm Sewer System (MS4) Area
- Town Boundaries
- Surface Water
- Federal/State
- Local/Other



### Data Sources:

Parcels - NH Dept. of Revenue Administration, 2019  
 Soils - Natural Resources Conservation Service, 2018  
 Land Use - Regional Planning Commissions, 2015 (Rockingham and Strafford); 2010 (Southern)  
 Impervious Surfaces - NH GRANIT, 2015  
 Conservation Lands - NH GRANIT, 2019  
 Municipal Separate Storm Sewer System (MS4) Area - US Census, 2012

Funding for this project was provided in part by a Watershed Assistance Grant from the NH Department of Environmental Services with Clean Water Act Section 604(b) funds from the U.S. Environmental Protection Agency.



**Total, Town of Hampton Falls: 16,389.0 lbs/year**