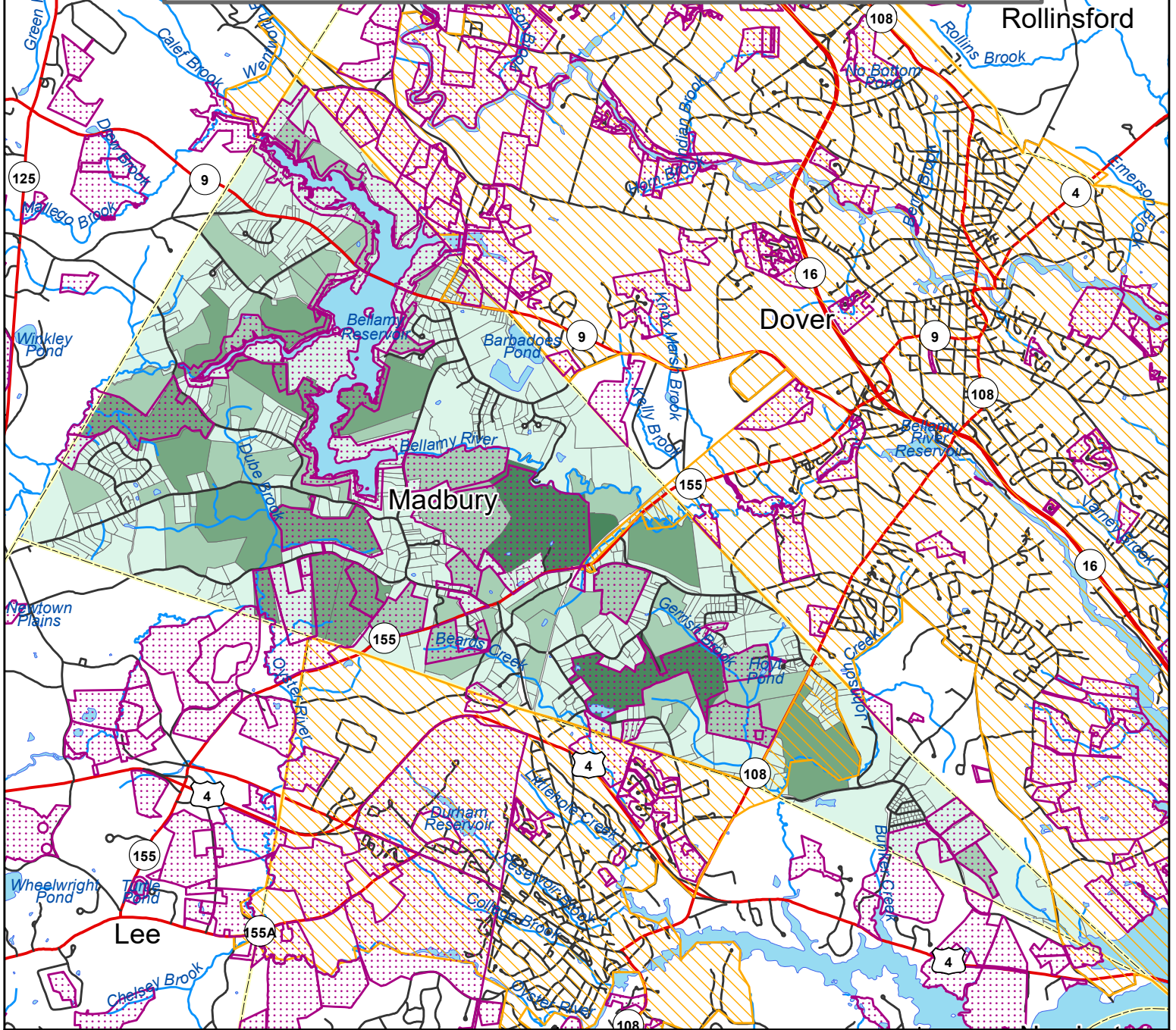
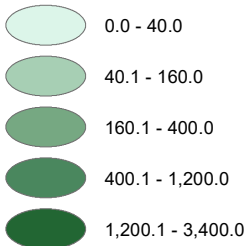


Pollutant Load Analysis in the Coastal Watershed Town of Madbury Pollutant Load by Parcel: Total Nitrogen

This map displays the results of applying EPA Region I Pollutant Load Export Rates (PLERs) to soils, land use, and impervious cover data, and aggregating the results by parcel.



Nitrogen (lbs/year)



Base Map

- Conservation Lands
- Municipal Separate Storm Sewer System (MS4) Area
- Town Boundaries
- Surface Water
- Federal/State Highway
- Local/Other Road

Total, Town of Madbury: 19,852.2 lbs/year



Data Sources:

- Parcels - NH Dept. of Revenue Administration, 2019
- Soils - Natural Resources Conservation Service, 2018
- Land Use - Regional Planning Commissions, 2015 (Rockingham and Strafford); 2010 (Southern)
- Impervious Surfaces - NH GRANIT, 2015
- Conservation Lands - NH GRANIT, 2019
- Municipal Separate Storm Sewer System (MS4) Area - US Census, 2012

Funding for this project was provided in part by a Watershed Assistance Grant from the NH Department of Environmental Services with Clean Water Act Section 604(b) funds from the U.S. Environmental Protection Agency.

