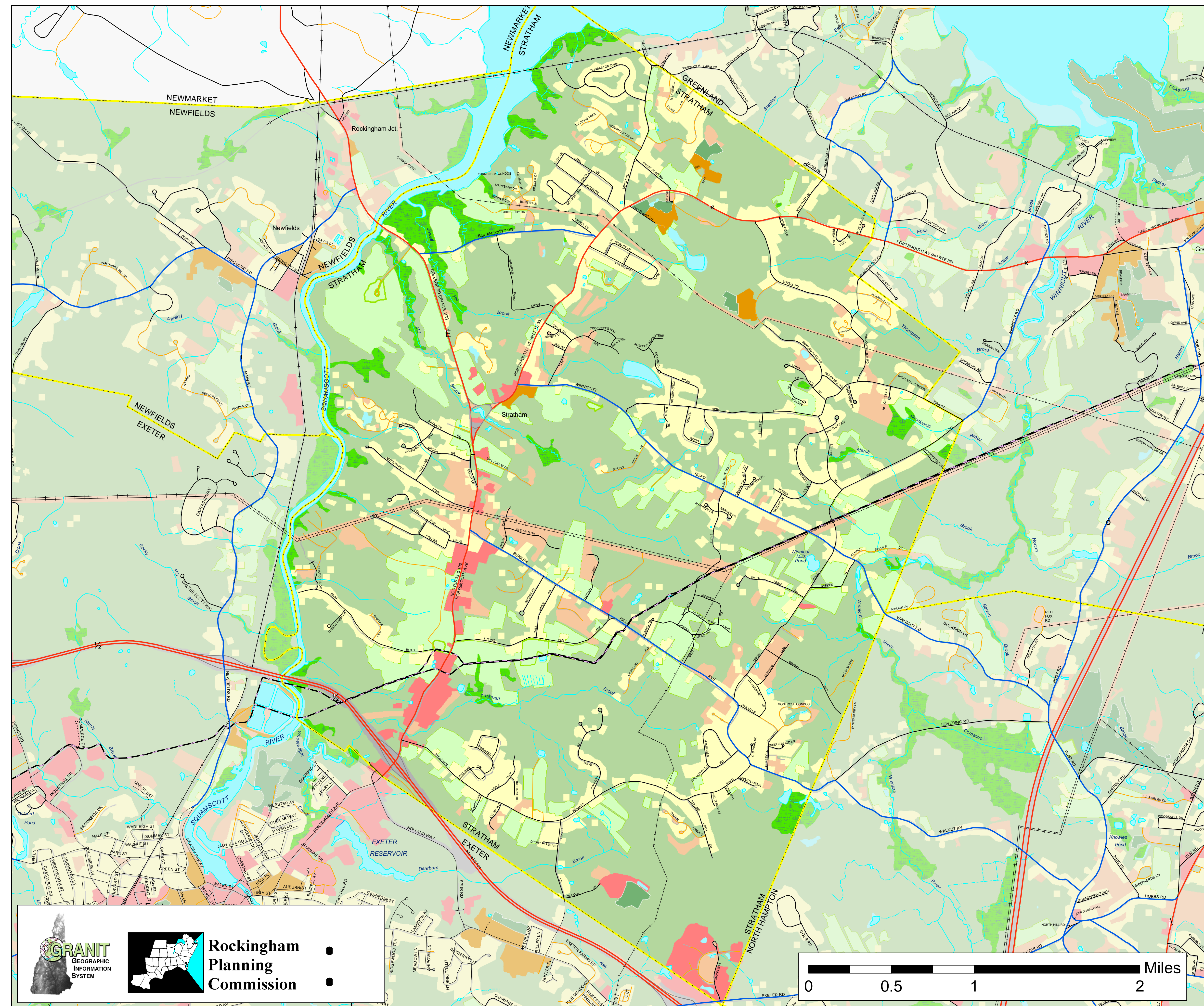


# Map 1 Existing Land Use Stratham, New Hampshire

June, 2007



- Residential
- Industrial/Commercial
- Mixed Urban
- Transportation
- Playing Fields/Recreational
- Agriculture
- Farmsteads
- Forested
- Water
- Open Wetlands
- Idle/Other

**BASE FEATURES**

- |  |   |  |
|--|---|--|
| <p><b>Roads by Legislative Class</b></p> <ul style="list-style-type: none"> <li><span style="display: inline-block; width: 15px; border-bottom: 1px solid red; margin-right: 5px;"></span> Class I - Primary System</li> <li><span style="display: inline-block; width: 15px; border-bottom: 1px solid blue; margin-right: 5px;"></span> Class II - Secondary System</li> <li><span style="display: inline-block; width: 15px; border-bottom: 1px solid green; margin-right: 5px;"></span> Class III - State Recreational</li> <li><span style="display: inline-block; width: 15px; border-bottom: 1px solid black; margin-right: 5px;"></span> Class IV - within Compacts</li> <li><span style="display: inline-block; width: 15px; border-bottom: 1px solid black; margin-right: 5px;"></span> Class V - Municipal</li> <li><span style="display: inline-block; width: 15px; border-bottom: 1px dashed black; margin-right: 5px;"></span> Class VI - Unmaintained Municipal</li> <li><span style="display: inline-block; width: 15px; border-bottom: 1px solid black; margin-right: 5px;"></span> Private</li> </ul> | <p><b>Political Boundaries</b></p> <ul style="list-style-type: none"> <li><span style="display: inline-block; width: 15px; border-bottom: 1px solid yellow; margin-right: 5px;"></span> State Boundary</li> <li><span style="display: inline-block; width: 15px; border-bottom: 1px solid orange; margin-right: 5px;"></span> County Boundary</li> <li><span style="display: inline-block; width: 15px; border-bottom: 1px solid yellow; margin-right: 5px;"></span> Town Boundary</li> <li><span style="display: inline-block; width: 15px; border-bottom: 1px dashed black; margin-right: 5px;"></span> Railroads</li> <li><span style="display: inline-block; width: 15px; border-bottom: 1px dashed black; margin-right: 5px;"></span> Major Powerlines</li> <li><span style="display: inline-block; width: 15px; border-bottom: 1px dashed black; margin-right: 5px;"></span> Major Pipelines</li> </ul> | <p><b>Surface Water Features</b></p> <ul style="list-style-type: none"> <li><span style="display: inline-block; width: 15px; border-bottom: 1px solid blue; margin-right: 5px;"></span> Stream, Shoreline</li> <li><span style="display: inline-block; width: 15px; border-bottom: 1px dashed blue; margin-right: 5px;"></span> Intermittent Stream</li> <li><span style="display: inline-block; width: 15px; border-bottom: 1px solid blue; margin-right: 5px;"></span> Apparent Wetland Limit</li> <li><span style="display: inline-block; width: 15px; border-bottom: 1px solid blue; margin-right: 5px;"></span> Other Water Feature</li> <li><span style="display: inline-block; width: 15px; height: 15px; background-color: lightblue; border: 1px solid black; margin-right: 5px;"></span> Bodies of Water</li> <li><span style="display: inline-block; width: 15px; height: 15px; background-color: grey; border: 1px solid black; margin-right: 5px;"></span> Adjacent Municipalities</li> </ul> |
|--|---|--|

*This is a static legend for the Rockingham Region. All features may not be present within the extent of this map.*

**MAP DATA SOURCES**

**Generalized Land Use** information was derived from interpretation of 1992 and 1993, 1:4800 scale aerial photographs produced by The Agricultural Stabilization and Conservation Service. Land Use polygons on this map attempt to show the general 'use' of the land occurring at each location. This information has been processed with 1998 photo based 'Developed Area' (see below) delineations to yield an approximation of the existing Land Use of 1998. This data has not been field tested, and RPC welcomes corrections and input from municipal users.

**Developed Areas** were mapped from manual interpretation of digital orthophotography taken in 1998. Developed areas comprise housing, industrial/commercial areas, parking lots, limited access highways, cemeteries, athletic fields, campgrounds, junk yards etc. Data automation and interpretation performed by GRANIT, Complex Systems Research Center, Durham, NH. Data completed July 2002.

**Base Features**  
Base features (transportation, political and hydrographic) were automated from the USGS Digital Line Graph data, 1:24,000, as archived in the GRANIT database at Complex Systems Research Center, Institute for the study of Earth, Oceans and Space, University of New Hampshire, Durham, NH: 1992-1999. The roads within the Rockingham Planning Region have been updated by Rockingham Planning Commission and by NH Department of Transportation through ongoing efforts.

**NOTE:** Base features for areas surrounding the Rockingham Region may be shown on this map. These features were automated from USGS 1:100,000 scale digital data sources. This information was provided for reference only. RPC makes no claim to its completeness or accuracy.

**Rockingham  
Planning  
Commission**

