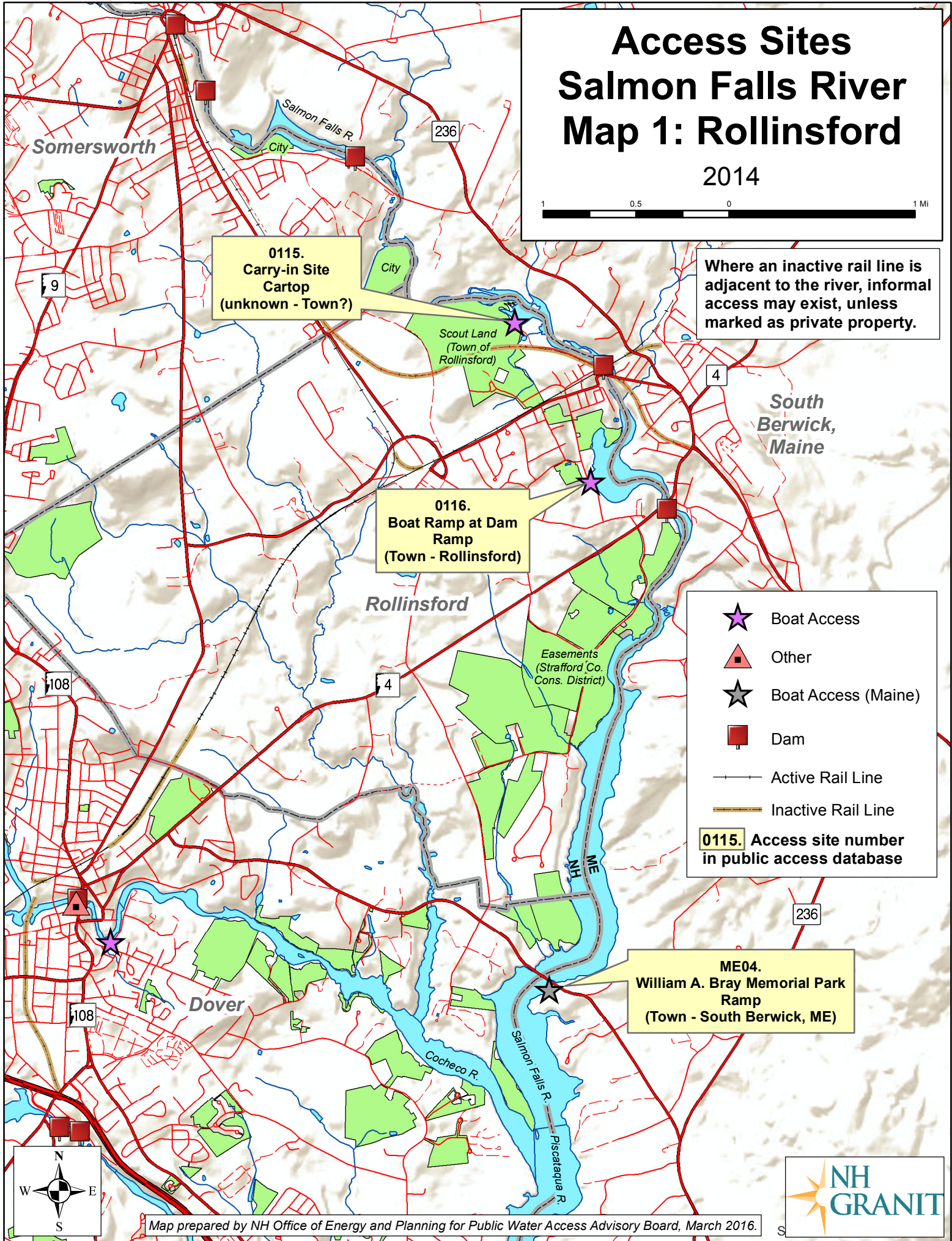
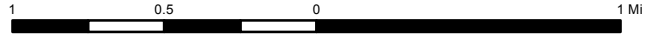


Access Sites Salmon Falls River Map 1: Rollinsford

2014



0115.
Carry-in Site
Cartop
(unknown - Town?)

Where an inactive rail line is adjacent to the river, informal access may exist, unless marked as private property.

0116.
Boat Ramp at Dam
Ramp
(Town - Rollinsford)

- ★ Boat Access
 - ▲ Other
 - ★ Boat Access (Maine)
 - Dam
 - Active Rail Line
 - - - Inactive Rail Line
- 0115.** Access site number in public access database

ME04.
William A. Bray Memorial Park
Ramp
(Town - South Berwick, ME)

