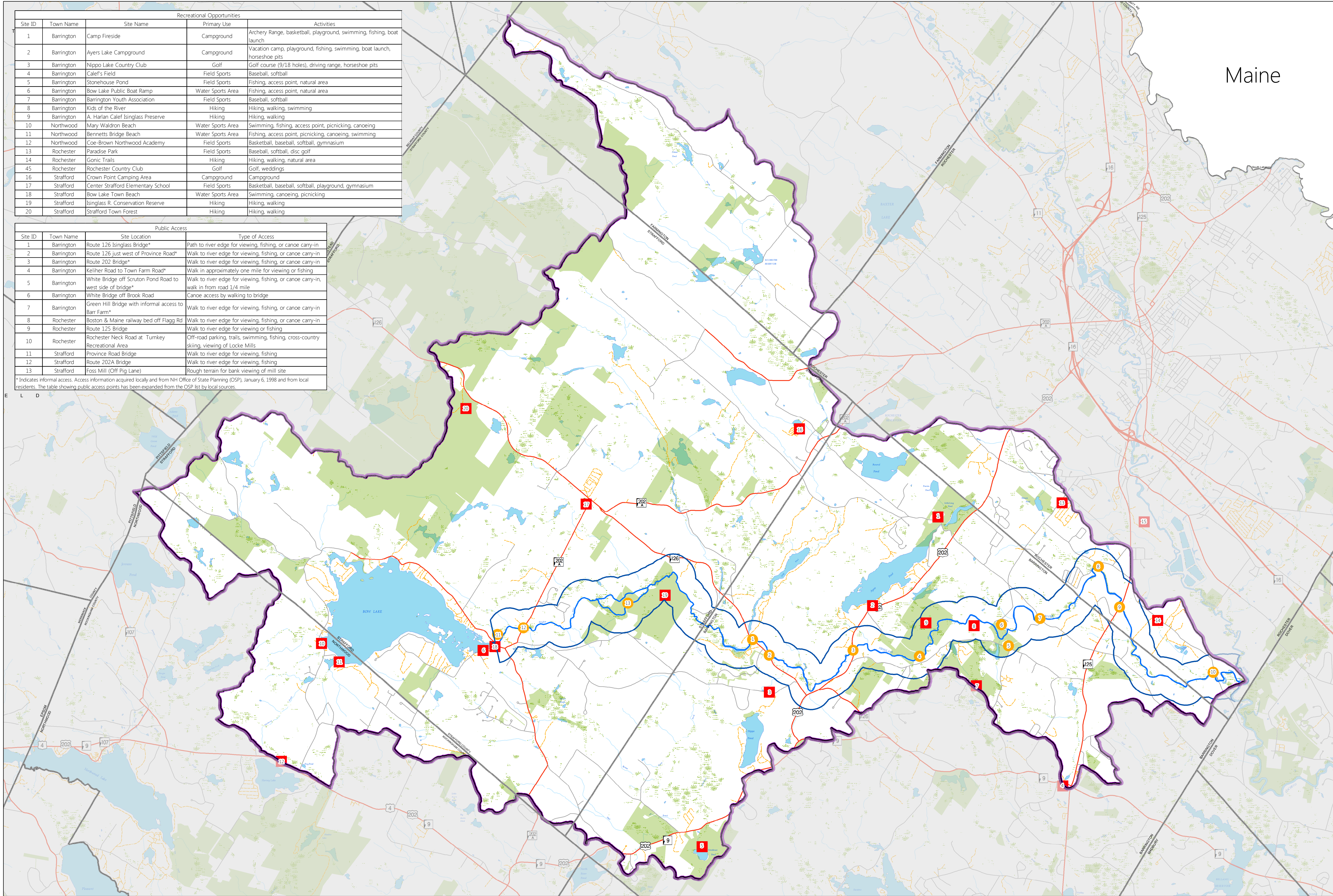


Isinglass River Management Plan

Figure 7c

Recreational Opportunities & Public Access



Maine

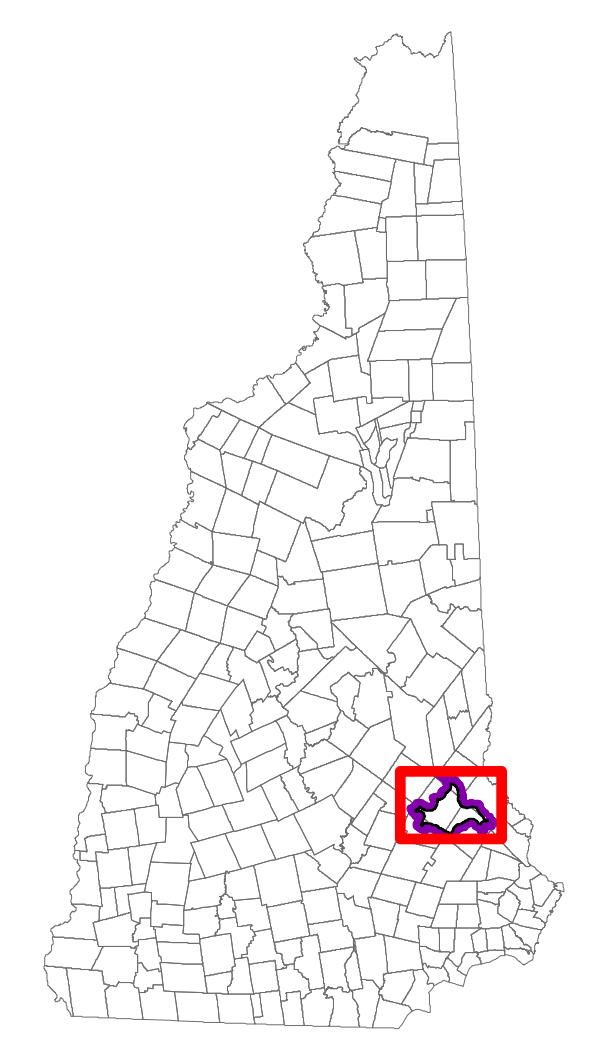
Recreational Opportunities				
Site ID	Town Name	Site Name	Primary Use	Activities
1	Barrington	Camp Fireside	Campground	Archery Range, basketball, playground, swimming, fishing, boat launch
2	Barrington	Ayers Lake Campground	Campground	Vacation camp, playground, fishing, swimming, boat launch, horseshoe pits
3	Barrington	Nippo Lake Country Club	Golf	Golf course (9/18 holes), driving range, horseshoe pits
4	Barrington	Calef's Field	Field Sports	Baseball, softball
5	Barrington	Stonehouse Pond	Field Sports	Fishing, access point, natural area
6	Barrington	Bow Lake Public Boat Ramp	Water Sports Area	Fishing, access point, natural area
7	Barrington	Barrington Youth Association	Field Sports	Baseball, softball
8	Barrington	Kids of the River	Hiking	Hiking, walking, swimming
9	Barrington	A. Harlan Calef Isinglass Preserve	Hiking	Hiking, walking
10	Northwood	Mary Waldron Beach	Water Sports Area	Swimming, fishing, access point, picnicking, canoeing
11	Northwood	Bennetts Bridge Beach	Water Sports Area	Fishing, access point, picnicking, canoeing, swimming
12	Northwood	Coe-Brown Northwood Academy	Field Sports	Basketball, baseball, softball, gymnasium
13	Rochester	Paradise Park	Field Sports	Baseball, softball, disc golf
14	Rochester	Gonic Trails	Hiking	Hiking, walking, natural area
45	Rochester	Rochester Country Club	Golf	Golf, weddings
16	Strafford	Crown Point Camping Area	Campground	Campground
17	Strafford	Center Strafford Elementary School	Field Sports	Basketball, baseball, softball, playground, gymnasium
18	Strafford	Bow Lake Town Beach	Water Sports Area	Swimming, canoeing, picnicking
19	Strafford	Isinglass R. Conservation Reserve	Hiking	Hiking, walking
20	Strafford	Strafford Town Forest	Hiking	Hiking, walking

Public Access			
Site ID	Town Name	Site Location	Type of Access
1	Barrington	Route 126 Isinglass Bridge*	Path to river edge for viewing, fishing, or canoe carry-in
2	Barrington	Route 126 just west of Province Road*	Walk to river edge for viewing, fishing, or canoe carry-in
3	Barrington	Route 202 Bridge*	Walk to river edge for viewing, fishing, or canoe carry-in
4	Barrington	Keiher Road to Town Farm Road*	Walk in approximately one mile for viewing or fishing
5	Barrington	White Bridge off Scruton Pond Road to west side of bridge*	Walk to river edge for viewing, fishing, or canoe carry-in, walk in from road 1/4 mile
6	Barrington	White Bridge off Brook Road	Canoe access by walking to bridge
7	Barrington	Green Hill Bridge with informal access to Barr Farm*	Walk to river edge for viewing, fishing, or canoe carry-in
8	Rochester	Boston & Maine railway bed off Flagg Rd	Walk to river edge for viewing, fishing, or canoe carry-in
9	Rochester	Route 125 Bridge	Walk to river edge for viewing or fishing
10	Rochester	Rochester Neck Road at Turnkey Recreational Area	Off-road parking, trails, swimming, fishing, cross-country skiing, viewing of Locke Mills
11	Strafford	Province Road Bridge	Walk to river edge for viewing, fishing
12	Strafford	Route 202A Bridge	Walk to river edge for viewing, fishing
13	Strafford	Foss Mill (Off Pig Lane)	Rough terrain for bank viewing of mill site

* Indicates informal access. Access information acquired locally and from NH Office of State Planning (OSP), January 6, 1998 and from local residents. The table showing public access points has been expanded from the OSP list by local sources.

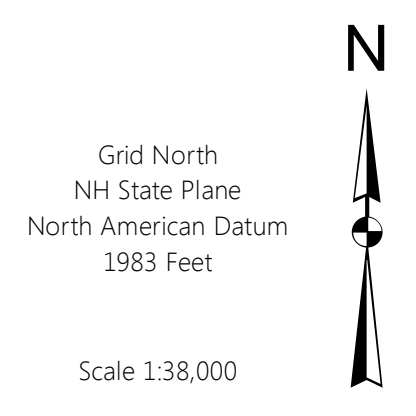
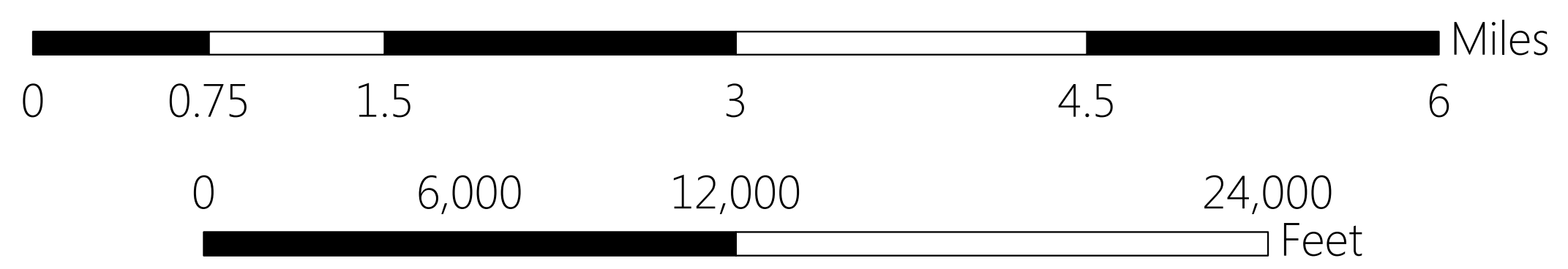
Legend

- Watershed Boundary
- Isinglass River Corridor
- Isinglass River
- Recreational Opportunities
- Public Access
- Conservation Lands [June, 2017]
- Permanently Protected Land



Map Created by the Strafford Regional Planning Commission
 150 Wakefield Street, Suite 12
 Rochester, NH 03867
 P: 603-994-3500 F: 603-994-3502
 Isinglass River Management Plan
 Path: M:\Region1\MapRequests\RLAC\2017_RMP_Updates\Map01
 Figure7c_Recreation_24x36
 Date/Author: September, 2017 / KAP
 Map should be used for planning purposes only.

Data Sources
 Base features are from USGS 1:24,000 scale Digital Line Graphs, as archived in the GRANIT database. Digital data in NH GRANIT represent the efforts of the contributing agencies to record information from the cited source materials. Complex Systems Research Center (CSRC), under contract to the Office of Energy & Planning (OEP), and in consultation with cooperating agencies, maintains a continuing program to identify and correct errors in these data. Neither OEP nor CSRC make any claim as to the validity or reliability or to any implied uses of these data.



Base Features Legend	
	Municipal Boundary
	Lake or Pond
	River, Stream, Brook
	Wetlands
	State Road Type
	Local Road Type
	Private Road Type

