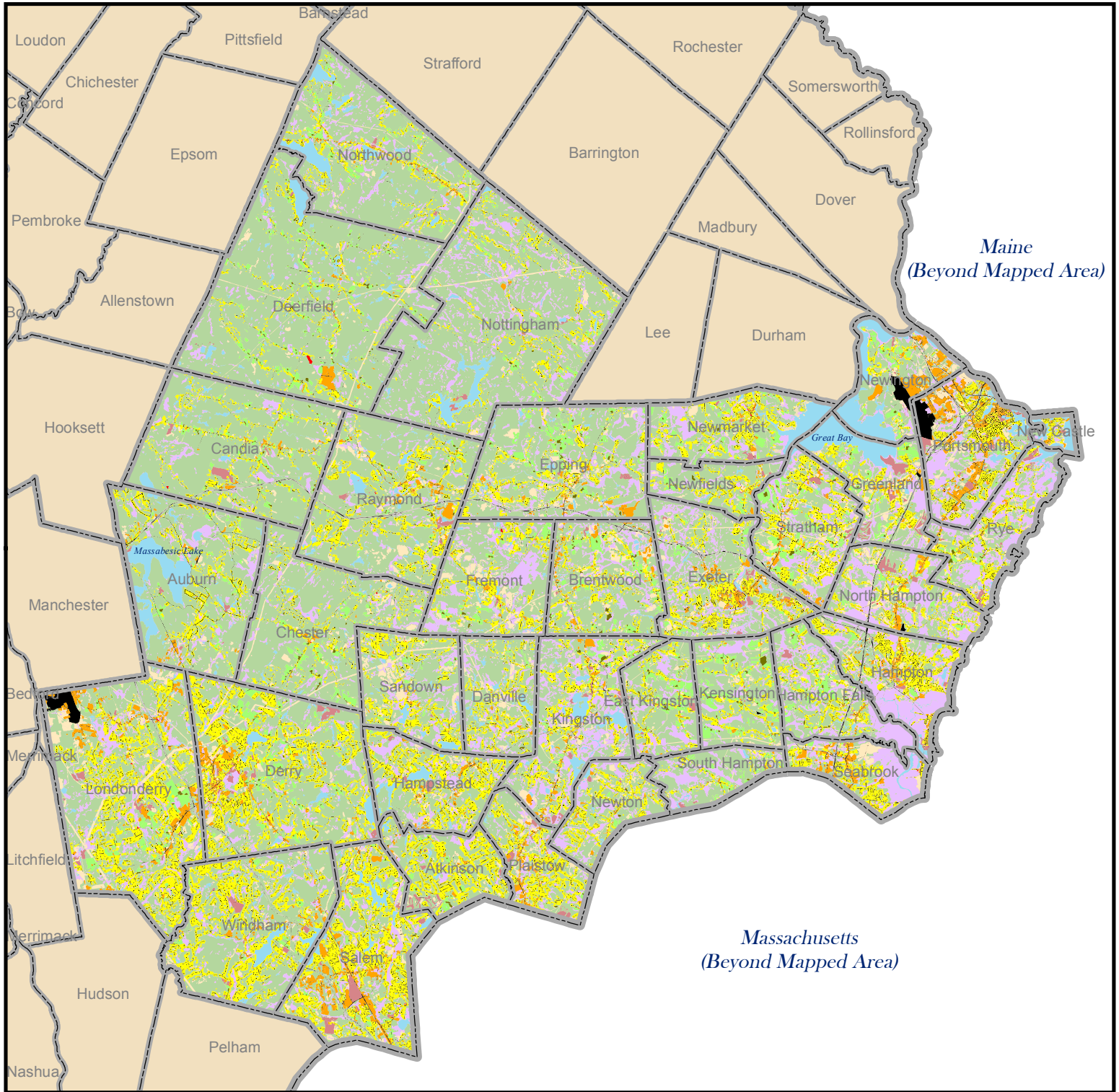


2005 Land Use: Rockingham County, New Hampshire



- | | | | |
|--|---------------------------|--|--------------------|
| | Residential | | Active agriculture |
| | Industrial/commercial | | Farmsteads |
| | Mixed urban | | Forested |
| | Transportation/roads | | Water |
| | Railroads | | Open wetlands |
| | Auxilliary transportation | | Idle/other open |
| | Playing fields/recreation | | |

Map Description:

This map displays 2005 land use data for Rockingham County, New Hampshire. The data were developed by interpreting 1-foot resolution natural color and color infrared digital orthophotographs (acquired in the spring of 2005). The Rockingham Planning Commission and Southern New Hampshire Planning Commission conducted the mapping using the NH Land Use Mapping Standard (November, 2008) originally developed for the I-93 Reconstruction Project. The data were then submitted to the Complex Systems Research Center for incorporation into a regional land use data layer. For more information about this and other GRANIT data, please visit: www.granit.sr.unh.edu

Map by:

Complex Systems Research Center
 Institute for the Study of Earth, Oceans, and Space
 University of New Hampshire
 November, 2011

