

Getting to know the NH GRANIT Data Mapper

Jennifer Lingeman, GISP
Complex Systems Research Center
Institute for the Study of Earth, Oceans, and Space
University of New Hampshire



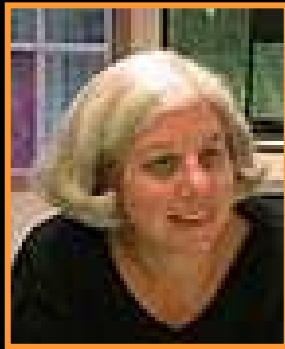
October, 2008

Presentation Overview

- ✓ Introduction to GRANIT
- ✓ Overview of the Data Mapper
- ✓ Future enhancements
- ✓ Hands on exercise

GRANIT - NH's Statewide GIS Clearinghouse

UNH Complex Systems Research Center



Fay Rubin



David (DJ) Justice



Chris Phaneuf



Jen Lingeman

What does GRANIT do?

- ✓ Create, archive, & distribute data
 - Conservation Lands updates, DFIRMs, Forest Stands
 - New GRANIT website
- ✓ Coordination & standards development
 - I93 Land Use
 - Metadata
- ✓ Applications & analysis
 - Impervious surface mapping
 - Wildlife Sightings Site
- ✓ Provide training and technical support
 - NH CommunityViz Technical Resource Center



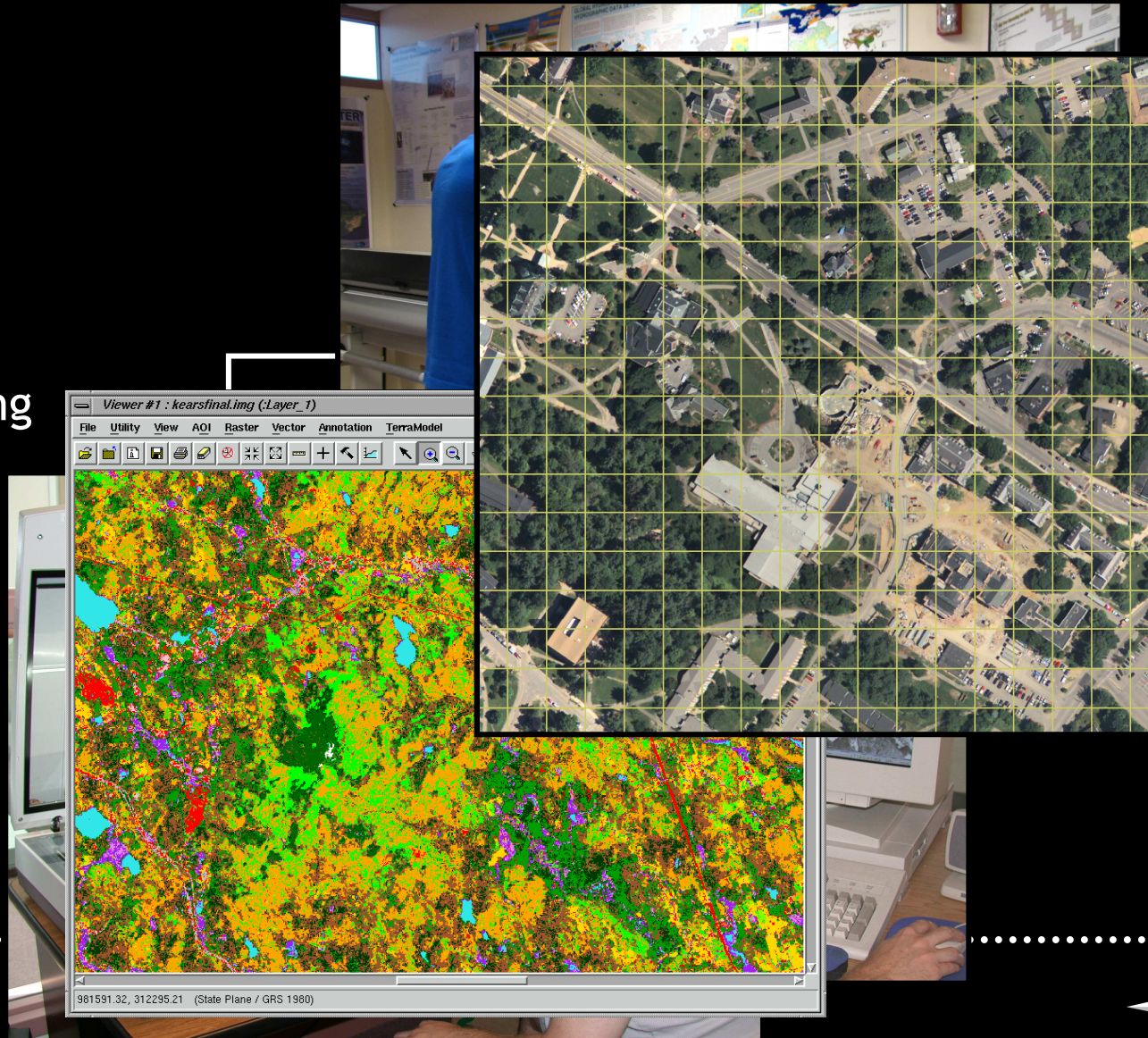
Data Development/Updates

Digitizing

GPS

Scanning

Image Processing



October, 2008

Who uses GRANIT data?

- ✓ State government
- ✓ Federal agencies
- ✓ Municipalities
- ✓ Regional planning agencies
- ✓ Private sector
- ✓ Non-profit organizations
- ✓ Academic community
- ✓ YOU!

Who creates GRANIT data?

- ✓ State government
- ✓ Federal agencies
- ✓ Municipalities
- ✓ Regional planning agencies
- ✓ Private sector
- ✓ Non-profit organizations
- ✓ Academic community
- ✓ YOU!

GRANIT is a cooperative effort ...



October, 2008

<http://www.granit.unh.edu>



A New Focus ...

NH GRANIT Data Mapper

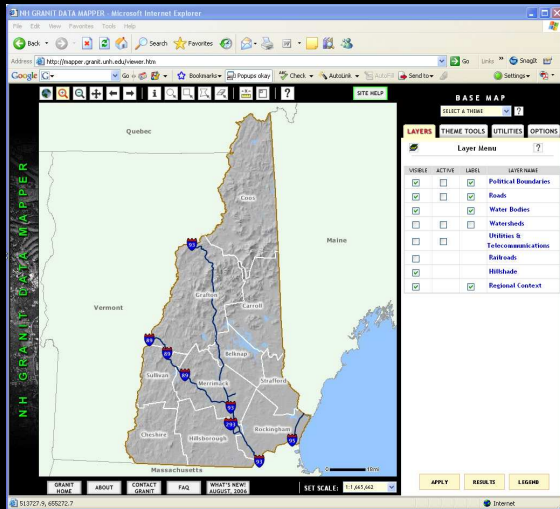
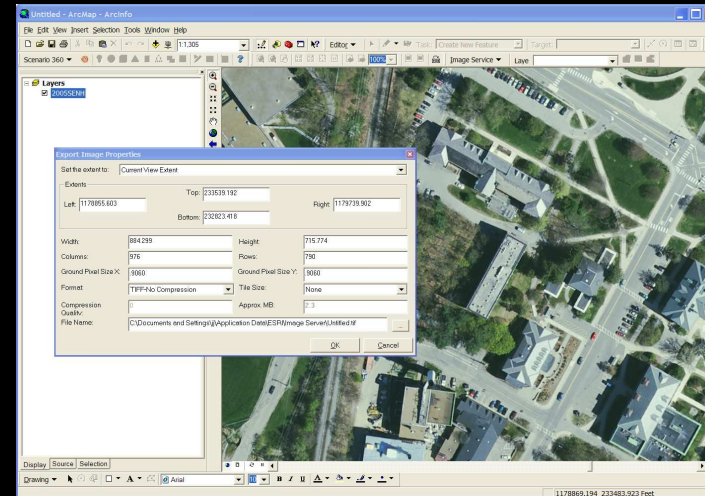
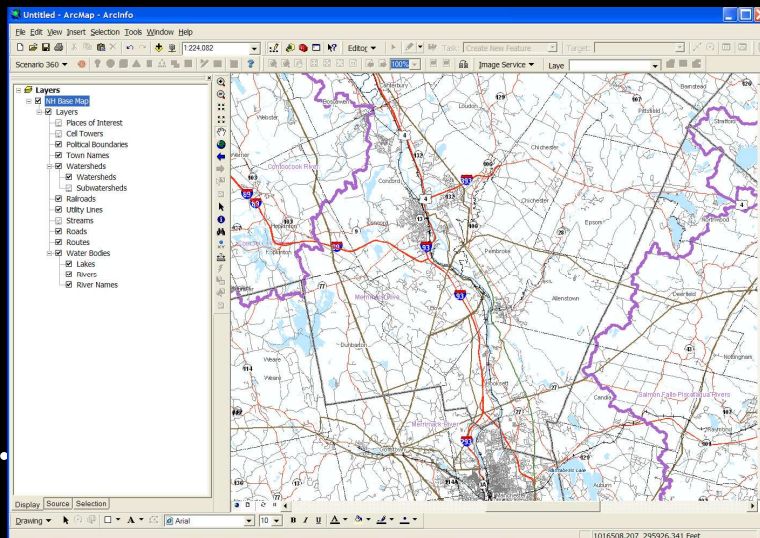


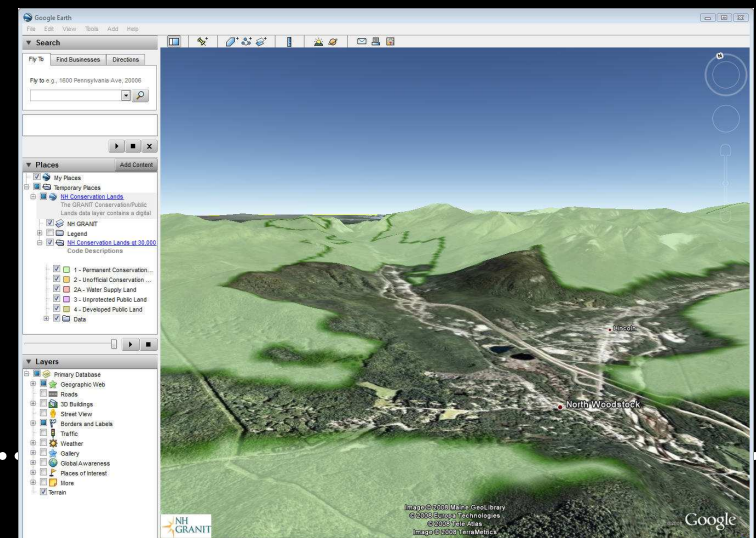
Image Server



Web Map Server (WMS)




KMZ/KML for Google Earth



October, 2008

NH GRANIT



WELCOME to NH GRANIT

NEW HAMPSHIRE'S STATEWIDE GIS CLEARINGHOUSE

Home
About Us
News
Projects
Resource Library

DATA >>
Data 101
Download Files
GRANIT Announcements
Maps & Services
Map Library

Google Custom Search

Search GRANIT

QUICK LINKS

- CommunityViz TRC
- Floodplain/DFIRM Resources
- Links to GIS Resources
- NH GIS Data & Metadata**
- NH GRANIT Data Mapper**
- Online Forums
- User Groups & Organizations

Login

Contact Us

GIS Event Calendar

March						
						1
2	3	4	5	6	7	8
9	10	11	12	13	14	15
16	17	18	19	20	21	22
23	24	25	26	27	28	29
30	31					

As New Hampshire geospatial service providers, we offer:

- ◆ data development
- ◆ spatial analysis
- ◆ online mapping
- ◆ image processing
- ◆ application development
- ◆ training
- ◆ cartography
- ◆ related technical services

We welcome your [comments and/or requests](#) for additional information.

News & Upcoming Events

----- News -----

[Internship Opportunity: NH Army National Guard](#)
March 13, 2008

[Database Addition: Historic Digital Raster Graphics](#)
March 13, 2008

[Job Opportunity: NH Dept. of Environmental Services](#)
March 10, 2008

[Job Opportunity: VUEWorks, Inc.](#)
March 5, 2008

[Database Updates/Additions: Recreation & Wildlife Layers](#)
February 27, 2008


[New Data Mapper Theme: Recreation](#)
February 27, 2008

[Stream Order Resources Available](#)
February 12, 2008

more news ...


Project Spotlight

[NH Wildlife Sightings Site](#)



Blanding's turtle - one of the species inventoried in the NH Wildlife Sightings site.

Photo credit: Michael N. Marchand, NH Fish & Game



NH GRANIT
NEW HAMPSHIRE'S STATEWIDE GIS CLEARINGHOUSE

Home About Us News Projects Resource Library

DATA Data 101 Download Free Data Order Data Onli

NH GRANIT Conservation/Public Lands

The NH GRANIT Conservation/Public Lands data layer contains... acres that are mostly undeveloped and are protected from future... previously mapped parcels or represent unique features, such as... included in the data layer.

Several "levels of protection" are recognized, as follows:

- 1) Permanent conservation land. Land protected from development through conservation easement, restrictions, or outright ownership by an organization or agency whose mission includes protecting land in perpetuity; more than 50% of area will remain undeveloped.
- 2) Unofficial conservation land. Land owned by an agency or organization whose mission is not conservation, but whose intent is to keep the land for conservation, passive recreation, or educational purposes. Not permanently protected.
- 2A) Water supply lands. Lands owned or controlled by suppliers of public drinking water. Includes all supplies owned by a municipality or a subdivision of a municipality, and all private water systems that serve 500 people or more.
- 3) Unprotected public open space land.
- 4) Developed public land. Includes lands having active recreational use on more than 50% of the area, e.g. beaches, picnic areas.
- 9) Unknown.

Note that some properties included in the data layer are privately owned and not open for public access.

The Conservation/Public Lands data layer is updated periodically. Data gaps may occur if 1) a parcel has been protected since our last data update, or 2) a parcel was inadvertently overlooked during previous mapping phases. If you identify such gaps, please review the materials below and contact the [GRANIT Conservation/Public Lands Data Manager](#).

Conservation/Public Lands data submission materials:

- [Conservation/Public Lands Data Standard](#)
- [Tract Data Sheet](#)
- [Tract Data Sheet Instructions](#)

GRANIT Resources

- Municipal Resources
- Learning Network
- NH Networking Resources
- Special Topics
- Links

Metadata Template

- Powerpoints
- References
- Standards**

Google Custom Search
Search GRANIT


QUICK LINKS

- Standards Home
- Basic Data Standards
- Conservation Lands**
- FIPS Codes
- GPS
- Land Use Mapping
- Metadata

Login
Contact Us

GIS Event Calendar

March						
						1
2	3	4	5	6	7	8
9	10	11	12	13	14	15
16	17	18	19	20	21	22
23	24	25	26	27	28	29
30	31					



NH GRANIT
NEW HAMPSHIRE'S STATEWIDE GIS CLEARINGHOUSE

Home About Us News Projects Resource Library
DATA Data 101 Download Free Data Order Data Onli

Google™ Custom Search
 Search GRANIT

Login
 Contact Us

GIS Event Calendar
 March

March						
						1
2	3	4	5	6	7	8
9	10	11	12	13	14	15
16	17	18	19	20	21	22
23	24	25	26	27	28	29
30	31					

Links to Municipal Sites

A B C D E F G H J K L

L

Laconia
 County: Belknap
 Regional Planning Commission: [Lakes RPC](#)
 Municipal Website: <http://www.cityoflaconianh.org/>
 Online Mapping: <http://www.mapsonline.net/laconianh/>

Lancaster
 County: Coos
 Regional Planning Commission: [North Country Council](#)
 Municipal Website: <http://www.lancasternh.org>
 Online Mapping: [View on NH GRANIT Data Mapper](#)

Landaff
 County: Grafton
 Regional Planning Commission: [North Country Council](#)
 Municipal Website: <http://www.nhes.state.nh.us/elmi/htmlprofiles/landaff.html>
 Online Mapping: [View on NH GRANIT Data Mapper](#)


Langdon
 County: Sullivan
 Regional Planning Commission: [Upper Valley Lake Sunapee RPC](#)
 Municipal Website: <http://www.nhes.state.nh.us/elmi/htmlprofiles/langdon.html>
 Online Mapping: [View on NH GRANIT Data Mapper](#)

Lebanon
 County: Grafton
 Regional Planning Commission: [Upper Valley Lake Sunapee RPC](#)
 Municipal Website: <http://www.lebcity.com>
 Online Mapping: <http://ims.lebcity.com/website/readme.htm>

Lee
 County: Strafford
 Regional Planning Commission: [Strafford RPC](#)
 Municipal Website: <http://www.leenh.org>
 Online Mapping: [View on NH GRANIT Data Mapper](#)

GRANIT Resources
 Municipal Resources
 Learning Network
 NH Networking Resources
 Special Topics
 Links

CommunityViz TRC
 Links to Municipal Sites
 Links to RPCs
 Municipal GIS Survey Results



NH GRANIT
NEW HAMPSHIRE'S STATEWIDE GIS CLEARINGHOUSE

Home About Us News Projects Resource Library
DATA Data 101 Download Free Data Order Data Online Maps & Services Map Library

Google™ Custom Search


Login
 Contact Us

GIS Event Calendar
March

						1
2	3	4	5	6	7	8
9	10	11	12	13	14	15
16	17	18	19	20	21	22
23	24	25	26	27	28	29
30	31					

Map Atlas

This page contains a series of 8.5 x 11 statewide maps that are available for download.

Map Atlas 

Project Maps

- [New Hampshire 4th Order & Higher Streams](#) - New Hampshire Statewide Map Atlas (8.5 x 11)
- [New Hampshire Base Map](#) - New Hampshire Statewide Map Atlas (8.5 x 11)
- [New Hampshire Conservation Lands](#) - New Hampshire Statewide Map Atlas (8.5 x 11)

Overview of the Data Mapper

- ✓ Purpose: The NH GRANIT Data Mapper is a web-based mapping tool offering New Hampshire's communities, agencies and organizations, and the general public access to a comprehensive collection of geospatial data archived in GRANIT.
- ✓ Funded by: New Hampshire Charitable Foundation/New Hampshire GIS Conservation Collaborative

<http://mapper.granit.unh.edu>

System Requirements

OS: Windows 98, 2000, XP, Vista

Browsers:

- Internet Explorer 5.5 or higher (with the exception of IE 7!)
- Firefox 1.5 or higher
- Netscape Communicator 7.1 or higher

OS: Linux

Browsers:

- Firefox 1.0.7 or higher

OS: Macintosh

Browsers:

- Firefox 1.0.6
- Camino 0.8.4
- Safari 2.0

System Requirements

Display

- Minimum screen resolution: 1024 x 768

Other

- WinZip, or equivalent software, for file download
- Flash 6.0 or greater (for viewing demonstration videos)
- Insure pop-up blocker is turned off!

NH GRANIT Data Mapper

Summary Palustrine Wetlands Acreage Report

Date Generated: 06/14/2007
Reporting Units: acres

Town of Ossipee

FIPS	3070
TOWN NAME	Ossipee
TOWN ACRES	48168.5
EMERGENT WETLANDS	356.8
FORESTED WETLANDS	2564.5
SCRUB-SHRUB WETLANDS	982.3
OTHER PALUSTRINE WETLANDS	216.2
TOTAL PALUSTRINE WETLANDS	4119.8
PERCENT OF TOWN	8.6

The screenshot shows the NH GRANIT Data Mapper interface. On the left, a vertical banner reads 'NH GRANIT DATA MAPPER'. The main area displays a map of the Town of Ossipee with various wetland types highlighted in different colors. A summary report is overlaid on the map, providing details about the town's wetlands. On the right, there is a 'WATER RESOURCES' panel with a 'SELECT A THEME' dropdown and a 'Layer Menu' table. The Layer Menu table has columns for 'VISIBLE', 'ACTIVE', 'LABEL', and 'LAYER NAME'. The bottom of the interface includes navigation links like 'GRANIT HOME', 'ABOUT', 'CONTACT GRANIT', 'FAQ', and 'WHAT'S NEW!', along with a 'SET SCALE' dropdown set to 1:77,806 and buttons for 'APPLY', 'RESULTS', and 'LEGEND'.

Data Themes:
Base Map, Water Resources, Land Conservation, Soils, Floodplains, Transportation, Geodetic Control, Wildlife, Recreation

"I work with the conservation commissions of over 78 municipalities and I use your program a lot and share it with them. It is a wonderful tool."

Steve Walker, Office of Energy and Planning

"Your sites' aerial maps with roads and streams identified are very useful. Our service area is all of NH and VT. Is there a similar resource for maps in VT?"

Nancy Lyon, President, New England K-9 Search & Rescue, New London, NH

"This is a great site for sportsmen. I use your topos lots!"

Paul Antkow, 4thebrdz@adelphia.net

"I've just been playing with the system a little - we used a topo map as a background a few weeks back - and I'm surprised at how much can be done with it."

Donna Moxley, Features Editor, Keene Sentinel

Some “basics” ...

The help system:

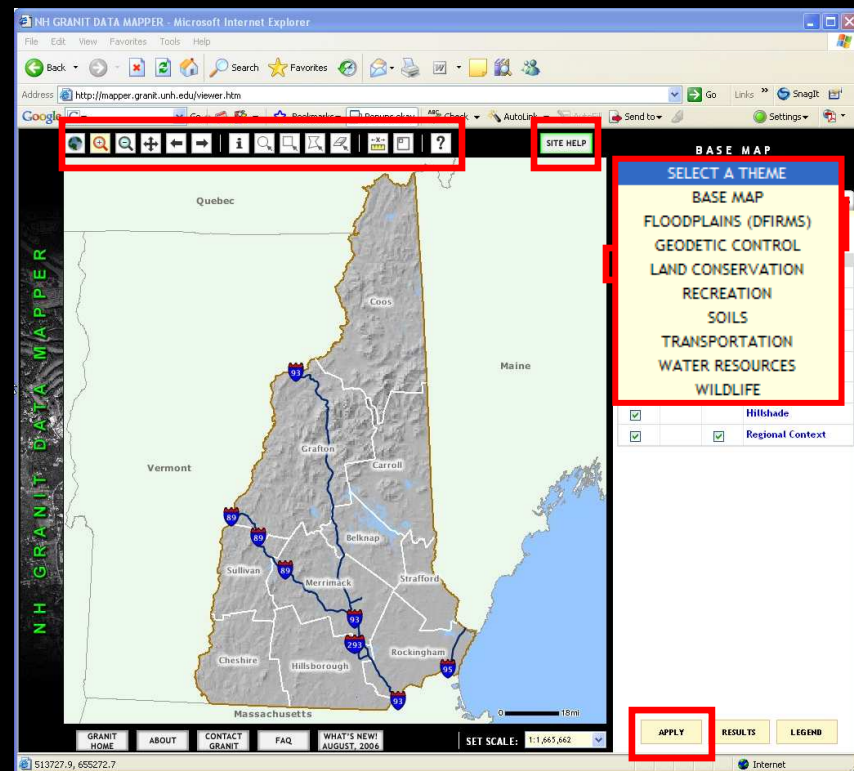
- General
- Context sensitive
- Videos

Concept of themes

Layers - Visible vs.
Active

“Apply” button

Interactive tools



Future Enhancements

- ✓ Maintenance of data layers - roads, conservation lands, soils, etc.
- ✓ New data sets - NAIP 2007
- ✓ New themes - Demographic/Census
- ✓ Additional map output formats
- ✓ Closer links to data distribution
- ✓ Redlining and geoprocessing

Hands on Exercise ...

<http://mapper.granit.unh.edu>

Thank you!

Shane Bradt

Geospatial Extension Specialist
UNH Cooperative Extension
sbradt@ceunh.unh.edu

Jennifer Lingeman

GRANIT Database Manager
UNH Complex Systems Research Center
jennifer.lingeman@unh.edu