

# GRANIT Municipal GIS Survey

Jennifer Lingeman  
Complex Systems Research Center  
University of New Hampshire

June, 2007



# Introduction

- ▶ Acquire better understanding of municipal tax parcel data holdings and related data sets
  - Tax parcels, zoning, elevation and image data
  - Resolution, accuracy, format, etc.
  - Data maintenance, distribution policies, etc.
- ▶ Administered to municipalities in NH over a six month period (June 2006 – January 2007)
- ▶ Funded by the NH GIS Conservation Collaborative



# Survey Design

- ▶ Designed by GRANIT staff at CSRC with input from the RPCs
- ▶ Contained approximately one hundred questions in six sections:
  1. Background Information
  2. Parcel Section
  3. Zoning Section
  4. Elevation Section
  5. Imagery Section
  6. Wrap-up Section

# Survey Administration

- ▶ Administered by the RPCs to the municipalities in their planning regions
- ▶ Instrument was implemented on Survey Monkey ([www.surveymonkey.com](http://www.surveymonkey.com)) – also available to RPCs as a MS Word file
- ▶ Results downloaded by GRANIT staff and imported into an Oracle database
- ▶ Final data compiled by GRANIT staff and made available to the public through the GRANIT website ([www.granit.sr.unh.edu](http://www.granit.sr.unh.edu))

# Survey Results

- ▶ 93% response rate
- ▶ Maps and graphs available for select questions
- ▶ Full survey results available as zipped, MS Excel files



# Survey Results:

## Has your municipality used GIS in any way in the past?

### GRANIT Municipal GIS Survey

**B01: Has your municipality used GIS in any way in the past?**

- Frequently
- Periodically (several times/year)
- Rarely (1-2 times)
- Never
- Not sure

**Survey Status**

- Town/city did not participate in the survey.
- Town/city did not respond to the survey, but the Regional Planning Commission answered the survey on their behalf.
- Unincorporated place/Not surveyed.



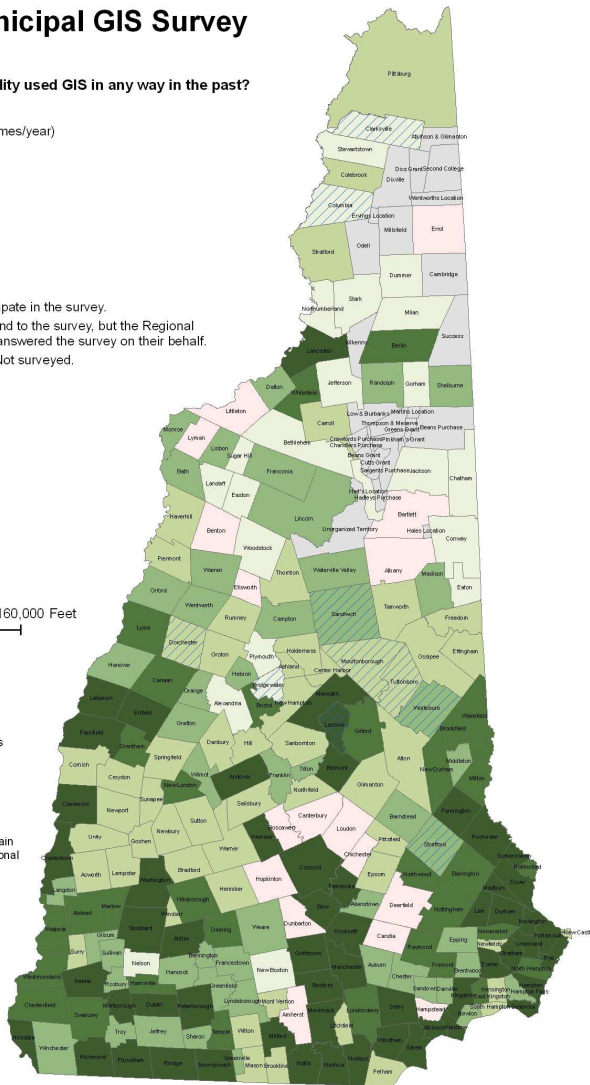
0 160,000 Feet

Survey conducted June, 2006 through January, 2007. Results compiled in March, 2007.

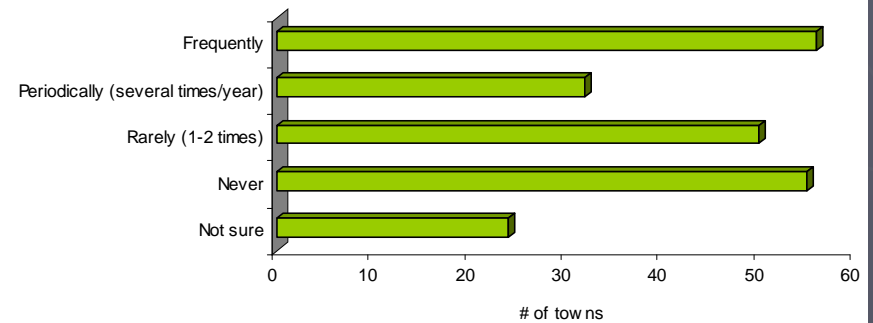
Please note that all results contain raw data submitted by the Regional Planning Commissions.



March, 2007



### B01: Has your municipality used GIS in any way in the past?



Note: Results based on 93% response rate  
March, 2007



# Survey Results:

## Do you have digital parcel data for your municipality?

### GRANIT Municipal GIS Survey

P04: Do you have digital parcel data for your municipality?

- Yes
- No

**Digital Parcel Data Maintenance Schedule**

- ▨ Data updated several times per year
- ▧ Data updated annually or bi-annually
- ▩ Data not maintained or update schedule unknown

**Survey Status**

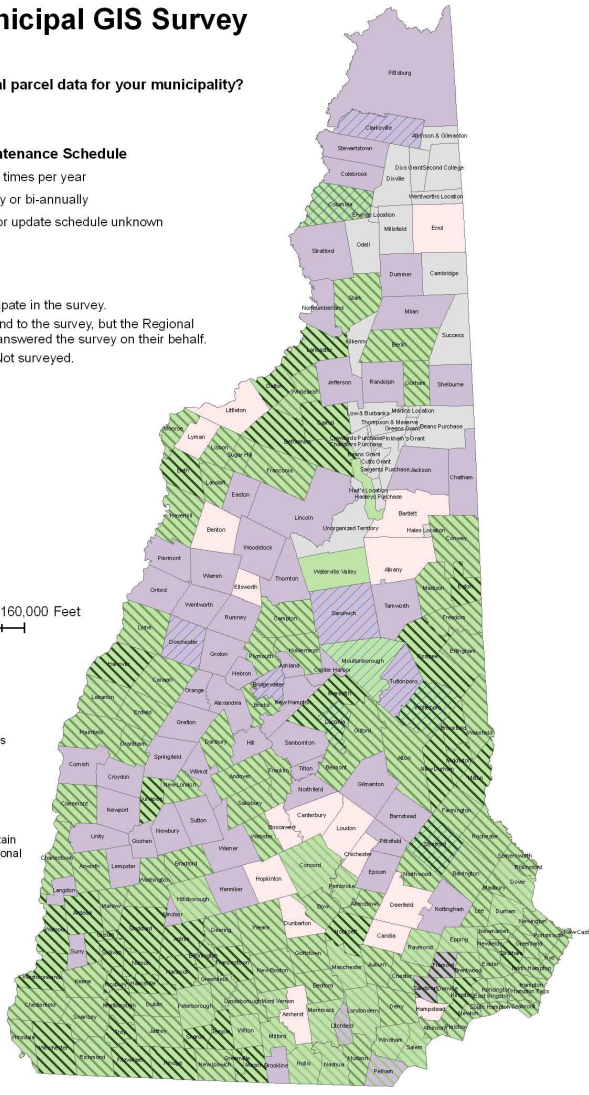
- Town/city did not participate in the survey.
- ▨ Town/city did not respond to the survey, but the Regional Planning Commission answered the survey on their behalf.
- Unincorporated place/Not surveyed.



0 160,000 Feet

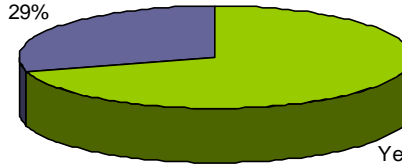
Survey conducted June, 2006 through January, 2007. Results compiled in March, 2007.

Please note that all results contain raw data submitted by the Regional Planning Commissions.



### P04: Do you have digital parcel data for your municipality?

No, 64, 29%



Yes, 153, 71%

Note: Results based on 93% response rate  
March, 2007





# Survey Results:

Are the digital parcel data made available to the public?

## GRANIT Municipal GIS Survey

P35: Are the digital parcel data made available to the public?

- Yes
- Yes, but not to everyone
- No
- Not sure
- Other
- We do not have digital parcel data

### Survey Status

- Town/city did not participate in the survey.
- Town/city did not respond to the survey, but the Regional Planning Commission answered the survey on their behalf.
- Unincorporated place/Not surveyed.



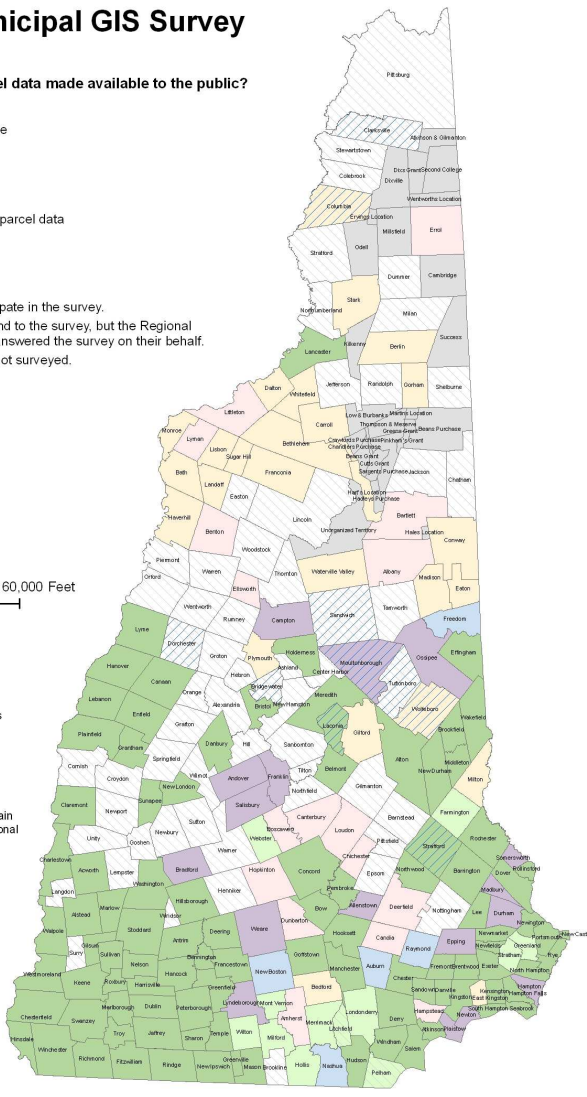
0 160,000 Feet

Survey conducted June, 2006 through January, 2007. Results compiled in March, 2007.

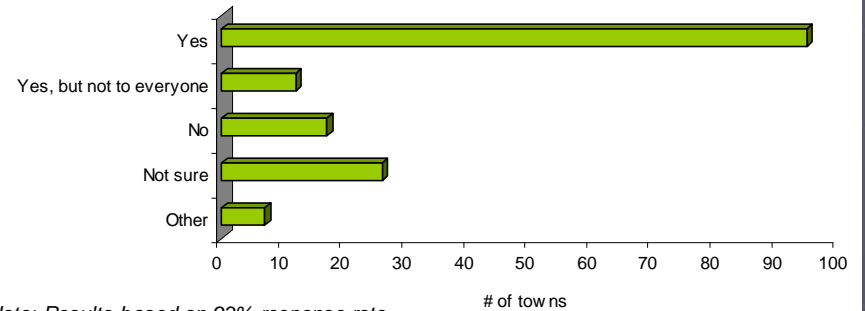
Please note that all results contain raw data submitted by the Regional Planning Commissions.



March, 2007



## P35: Are the digital parcel data made available to the public?



Note: Results based on 93% response rate  
March, 2007





# Survey Results:

## Is there a fee for acquiring the digital parcel data?

### GRANIT Municipal GIS Survey

**P44: Is there a fee for acquiring the digital parcel data?**

- Yes
- No
- Not sure
- Did not respond to question
- We do not have digital parcel data

**Survey Status**

- Town/city did not participate in the survey.
- Town/city did not respond to the survey, but the Regional Planning Commission answered the survey on their behalf.
- Unincorporated place/Not surveyed.



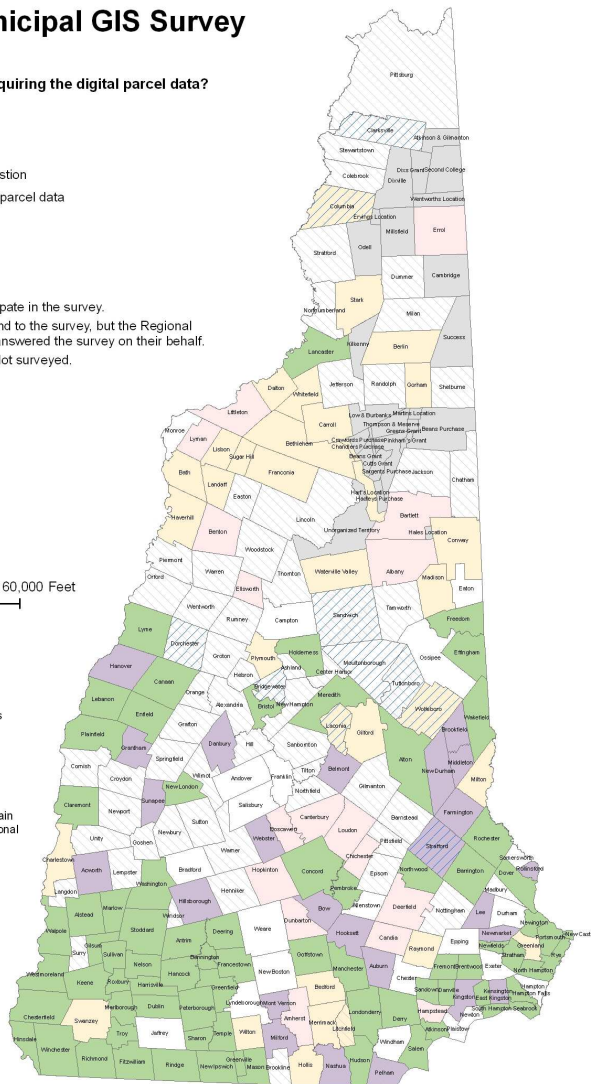
0 160,000 Feet

Survey conducted June, 2006 through January, 2007. Results compiled in March, 2007.

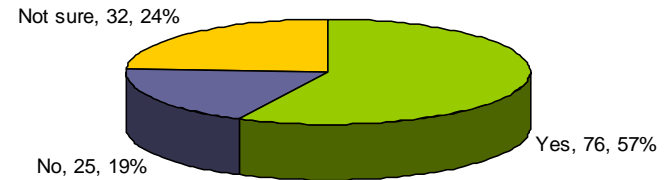
Please note that all results contain raw data submitted by the Regional Planning Commissions.



March, 2007



### P44: Is there a fee for acquiring the digital parcel data?



*Note: Results based on 93% response rate  
March, 2007*

Fees range from "time and supplies" to \$8000 for town-wide data.



# Next Steps

- ▶ Survey generated a great deal of interest in the state – multiple requests for the results before they were published
- ▶ Recommend reissuing the survey, or a simplified version of it, on a biannual cycle
- ▶ Web tool likely to remain instrument of choice for future surveys – however develop a custom web tool at CSRC and include embedded error checks
- ▶ Possibly collect information regarding estimates for annual town expenditures on GIS



# Thank You ...

- ▶ To the Regional Planning Commission staff for their time and effort
- ▶ To the NH GIS Conservation Collaborative for its support

