

---

# Lee-Madbury 2011 Perambulation Report

---

---

Perambulation of Town  
Bounds

---

Robert Moynihan

---

# TABLE OF CONTENTS

INTRODUCTION

RECORD OF PERAMBULATION

SUPPORTING DOCUMENTATION:

OVERVIEW MAP OF TOWN LINE AND BOUND DESIGNATIONS

2010 ORTHOPHOTO (GRANIT)

INDIVIDUAL BOUND DIAGRAMS, PHOTOS AND GPS POSITIONS

MLD 1	(Madbury - Lee - Durham Bound 1)
ML 1	(Madbury - Lee Bound 1)
ML 1A	(Madbury - Lee Bound 1A)
ML 2	(Madbury - Lee Bound 2)
ML 3	(Madbury - Lee Bound 3)
BLM 1	(Barrington – Lee – Madbury Bound 1)

TABLE OF BOUNDS AND POSITIONS

COPY OF 1984 PERAMBULATION AND DIAGRAMS

TOWN OF LEE ROAD MAP

PORTION OF 1893 USGS TOPOGRAPHIC MAP

## INTRODUCTION

This report has been prepared to document the perambulation of the common Town Line between Madbury and Lee New Hampshire. The perambulation was performed by Eric Fiengenbaum and Mark Ward for the Town of Madbury and by Planning Assistant Caren Rossi and Robert Moynihan (Licensed Land Surveyor) for the Town of Lee.

The route followed was from East to West (see Overview Map on page 7) with photos taken and GPS (Global Positioning System) coordinates (WGS 84 Datum) obtained for each town bound found. A "Recreation-grade" GPS receiver was used, with an accuracy in the 10 to 20 foot range. The coordinates given in the report are Latitude and Longitude based on the WGS 84 Datum.

*(Note that one arc second of Latitude is approximately 100 ft. on the ground and one arc second of Longitude is approximately 75 ft. – at this latitude)*

The perambulation description used is a copy of those used earlier by the towns with the addition of bound designation numbers, updated road names, Latitude and Longitude, and any missing or modified bounds. The distances and directions used in the earlier perambulations were not changed.

# Perambulation of the lines between the towns of Lee and Madbury

August 17, 2011 (Walking West)  
(Revisions and notes in **red**)

**(From Perambulation of the lines between the towns of Lee and Madbury 1984)**  
(Walking west)

We the Selectman Representatives of the above named towns, met on the 17<sup>th</sup> day of August, 2011, on state Route 155 (*near the residence of Harry Hill*) and proceeded to a stone marked 1866, 1948, 1955, 1969 (**MLD-1**), on land of **Joan Schreiber**, being the same corner bound between Lee, Madbury, and Durham. (a flat stone marker with M on one side and D & L on the other is located about 6 ½ feet from the first mentioned stone and was also found)

[**ML-1**] We began at the above named stone (**MLD-1**), thence northerly 57° 35 west 220 rods (3630 ft) to a stone marked L.M. about 300 feet south of the old cemetery **on land of Cosby-Houston Family Rev. Trust;**

[**ML-1A**] Thence the same course 161 rods (**2656.5 ft**) to a rock marked L.M. in the stone wall on the south side of the Cherry Lane road by the **land of Michael P. and Barbara E. Lilly (R & L Trust)** and opposite the old road leading to the formerly so-called Emerson Road now Hayes Road;

[**ML-2**] Thence same course 180 rods 15 links (**2972.5 ft**) to a rock marked M.L., near the Hayes Road; (and a marked pine tree near the Emerson Road (1976)) **on land owned by John Houslein;**

[**ML-3**] Thence same course 22 rods 5 links (**371.25 ft**) to a rock near the stone wall on the northwesterly side of the Hayes Road leading from Madbury to Barrington (Emerson Road) marked M.L. **next to land owned by John P. and Mary M. McKernan;**

[**BLM-1**] Thence same course 42 rods 181 links (**722.9 ft**) to a **Granite Bound** station in the field on land now owned by **Steven Slovanski**. marked L.M.B. 1857, 1885, 1955, which is the established corner between the towns of Barrington, Lee, and Madbury. All bounds were GPS'd, flagged, and photos taken (see report).

Signatures Page below



\_\_\_\_\_

Caren Rossi

\_\_\_\_\_

Robert Moynihan, PE, LLS  
Perambulated for Lee

\_\_\_\_\_

\_\_\_\_\_

\_\_\_\_\_

Selectmen of Lee

\_\_\_\_\_

Eric Fiegenbaum  
Perambulated for Madbury  
(Mark Ward of Madbury accompanied)

\_\_\_\_\_

\_\_\_\_\_

\_\_\_\_\_

\_\_\_\_\_ of Madbury

Received and Recorded the \_\_\_\_ day of \_\_\_\_\_, \_\_\_\_\_

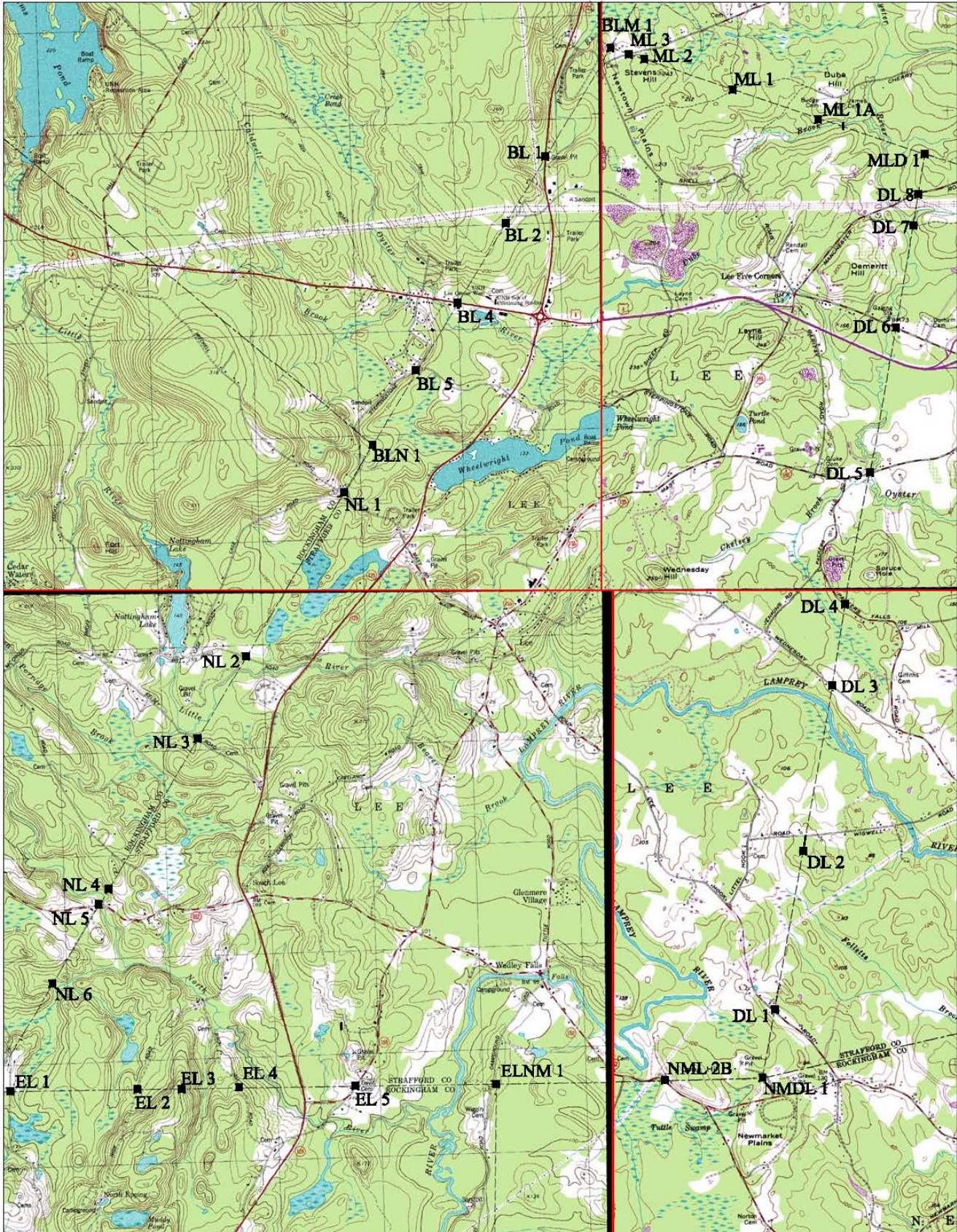
Book \_\_\_\_ Page \_\_\_\_

\_\_\_\_\_  
Town Clerk of \_\_\_\_\_

# SUPPORTING DOCUMENTATION

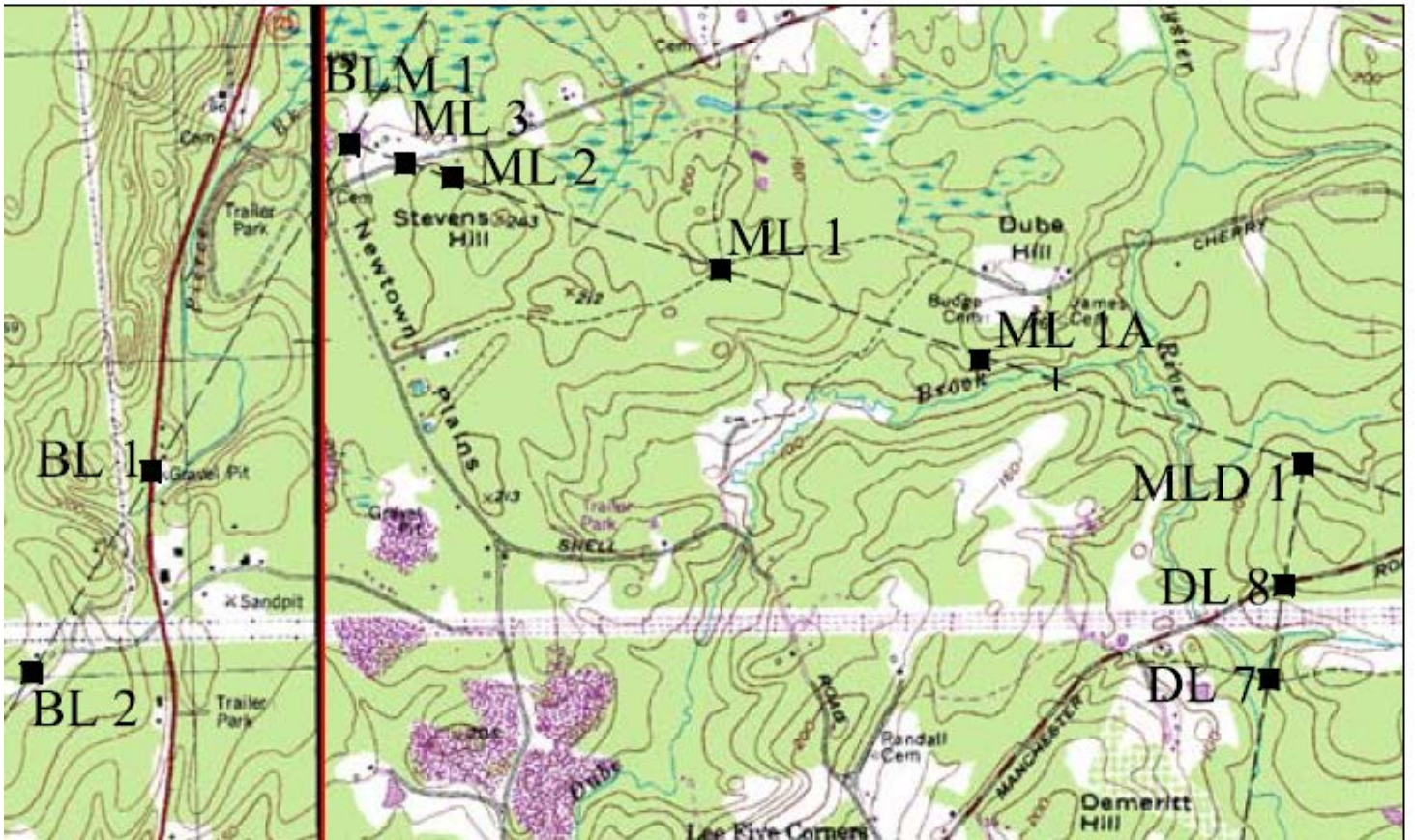


# OVERVIEW MAP OF TOWN LINE AND BOUND DESIGNATIONS





# LEE – MADBURY TOWN LINE SEGMENT AND BOUND DESIGNATIONS





2010 ORTHOPHOTO  
(GRANIT)









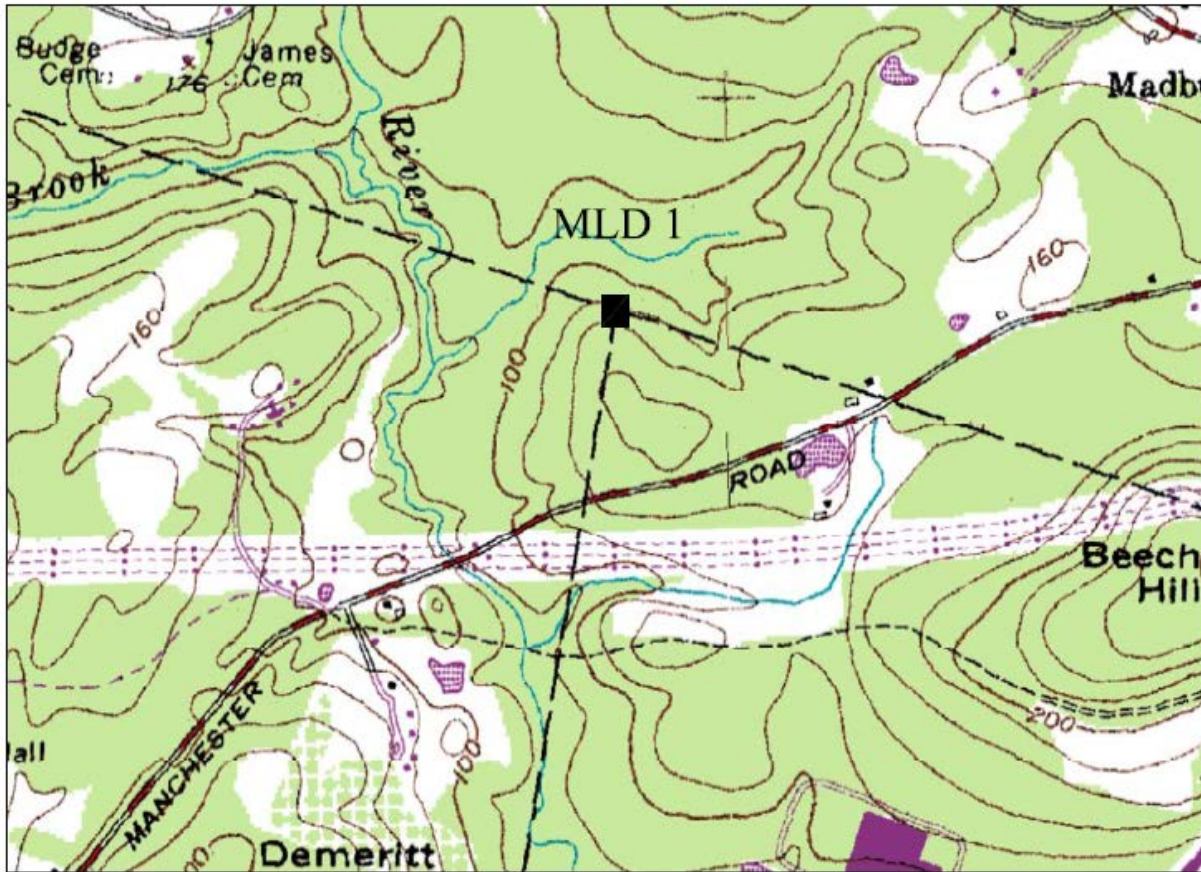
# BOUND MLD 1

Date: 8-17-2011

Latitude = 43° 19' 46.5"

Longitude = 70° 57' 38.9" West

Stone MLD 1



Scale 1" = 1000'

Estimated Location: NHSPC NAD 83

E = 1172642.34

N = 242403.33

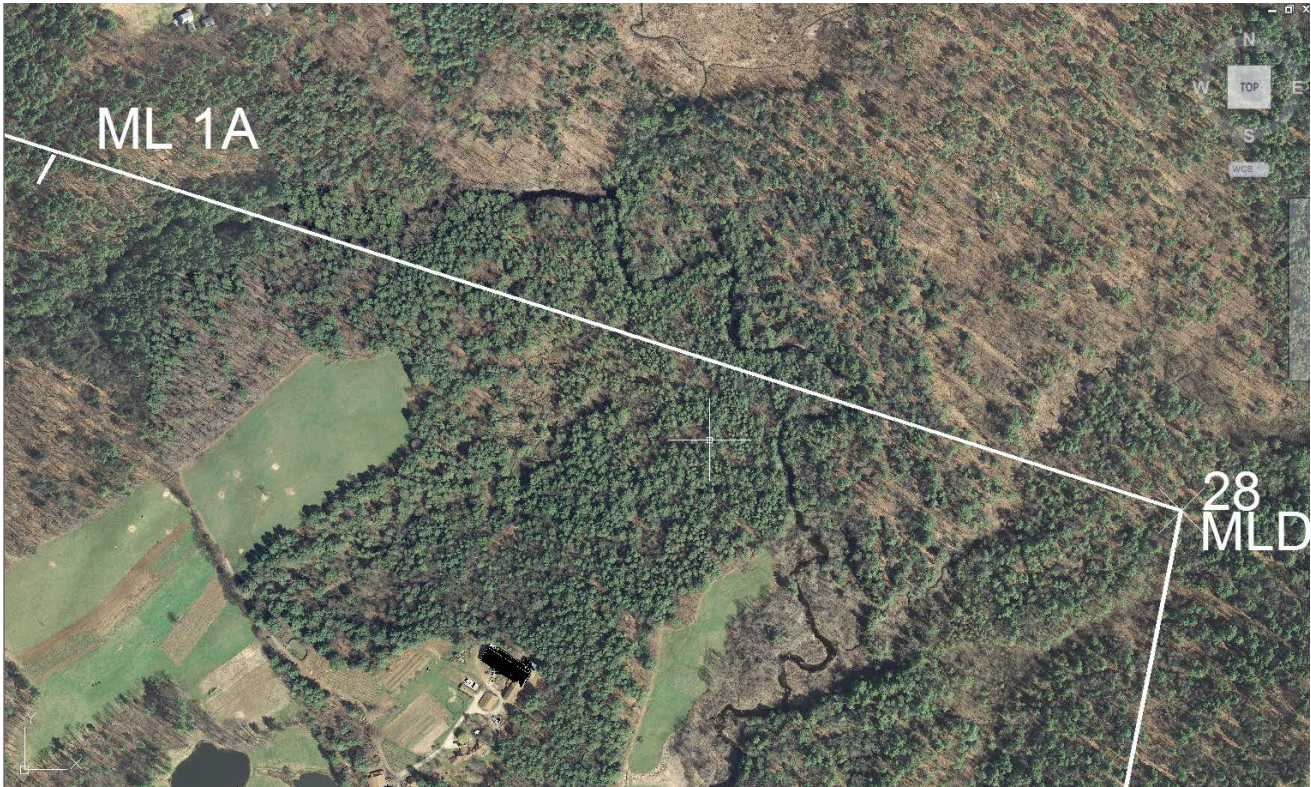
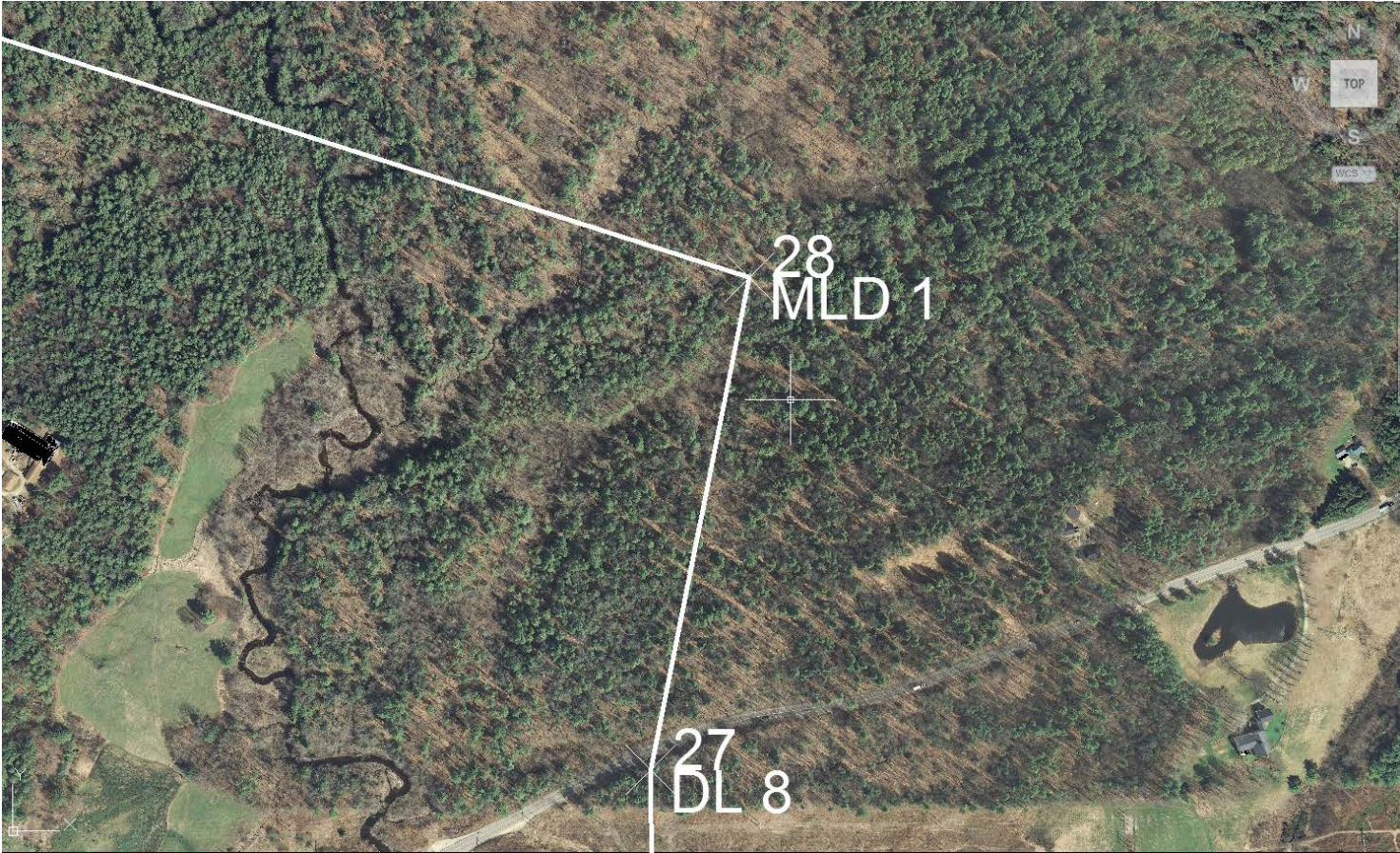
GPS Location: NHSPC NAD 83

E = 1172547.82

N = 242456.61



# BOUND MLD 1





# BOUND MLD 1

2004 photos





# BOUND MLD 1

2011 photos



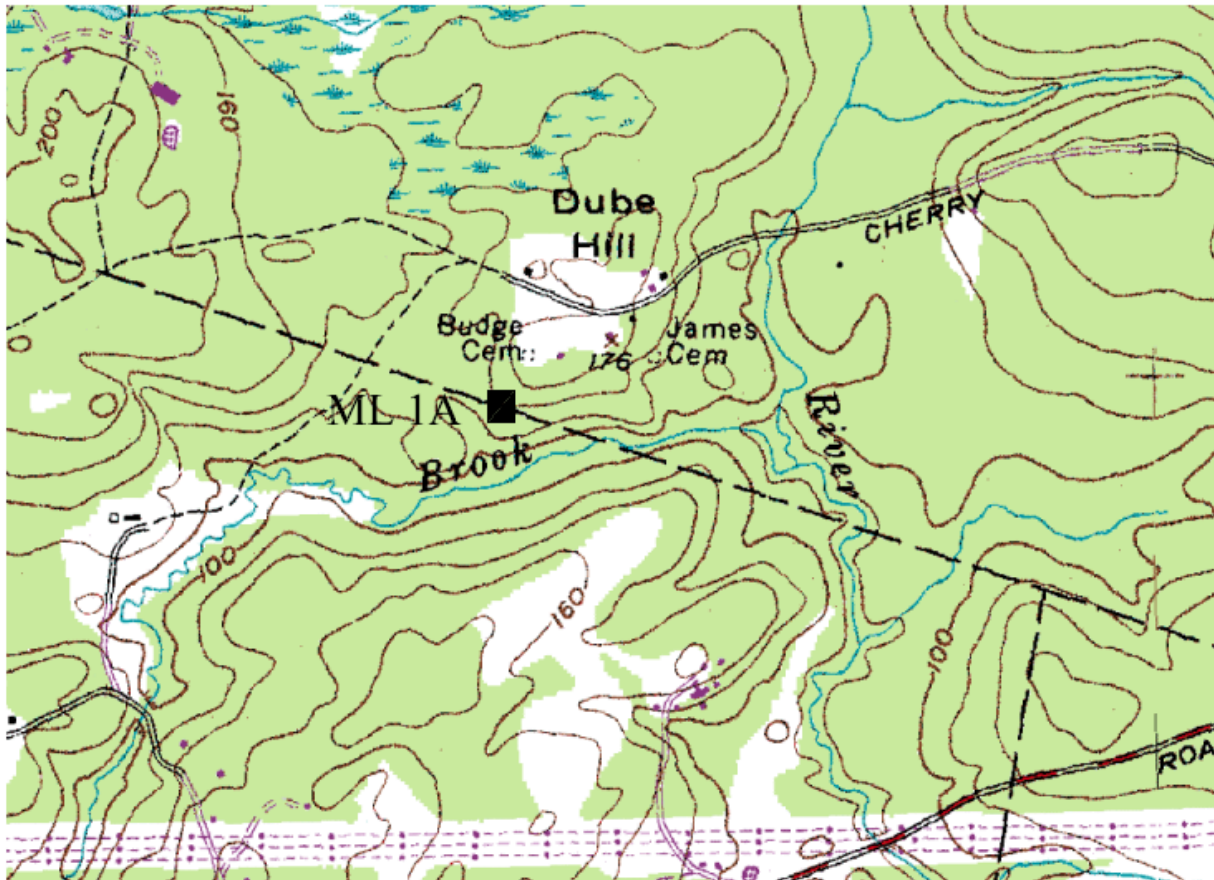
# BOUND ML 1A

Date: August 17, 2011

Latitude = 43° 09' 58.9"

Longitude = 70° 58' 29.5" W

Stone ML 1A



Scale 1" = 1000'

Estimated Location: NHSPC NAD 83

E = 1169956.47

N = 243303.95

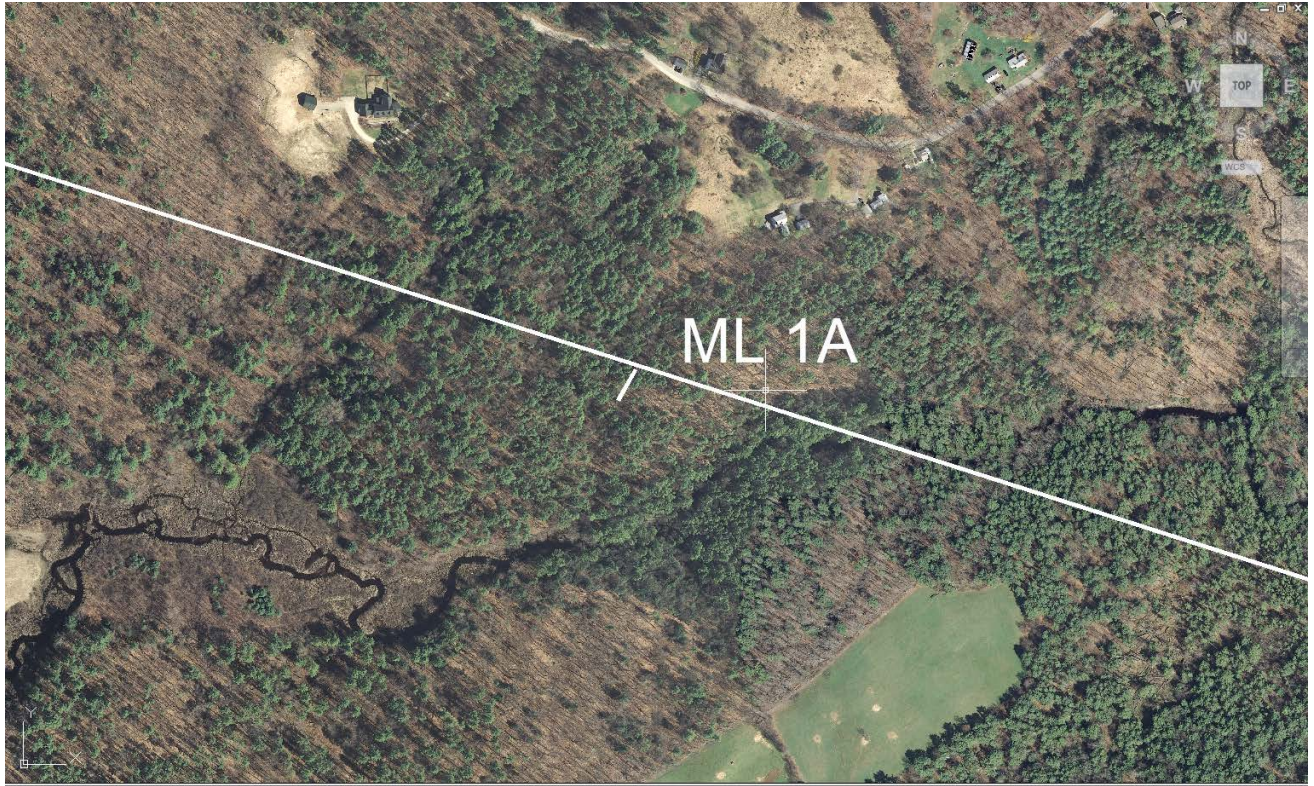
GPS Location: NHSPC NAD 83

E = 1168817.48

N = 243620.24 based on GPS position obtained  
8/16/2011



# ML 1A





# BOUND ML 1A

2004 photos





# BOUND ML 1A

2004 photos





# BOUND ML 1A

2011 photos

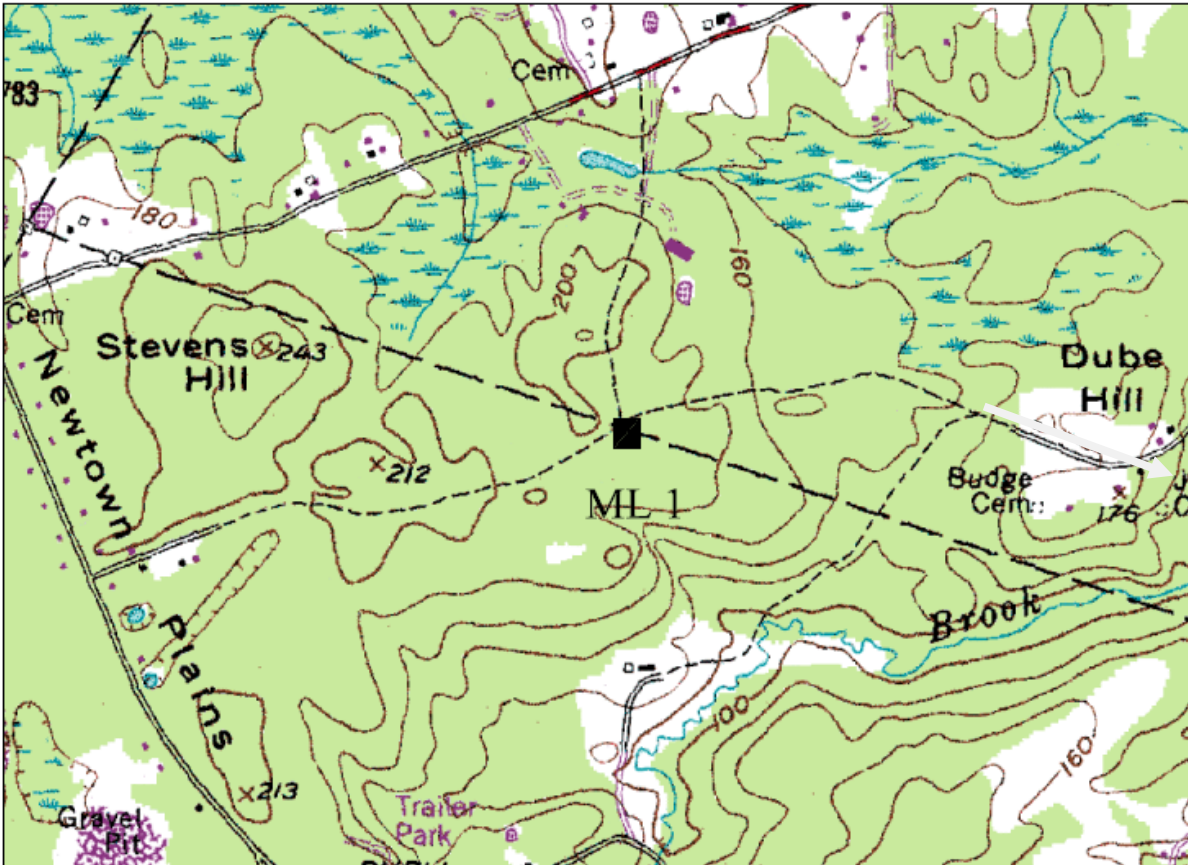


# BOUND ML 1

Date: August 17, 2011

Latitude = 43° 10' 07.7"

Longitude = W70° 59' 00" Stone ML 1



Scale 1" = 1000'

Estimated Location: NHSPC NAD 83

E = 1166529.86

N = 244455.04

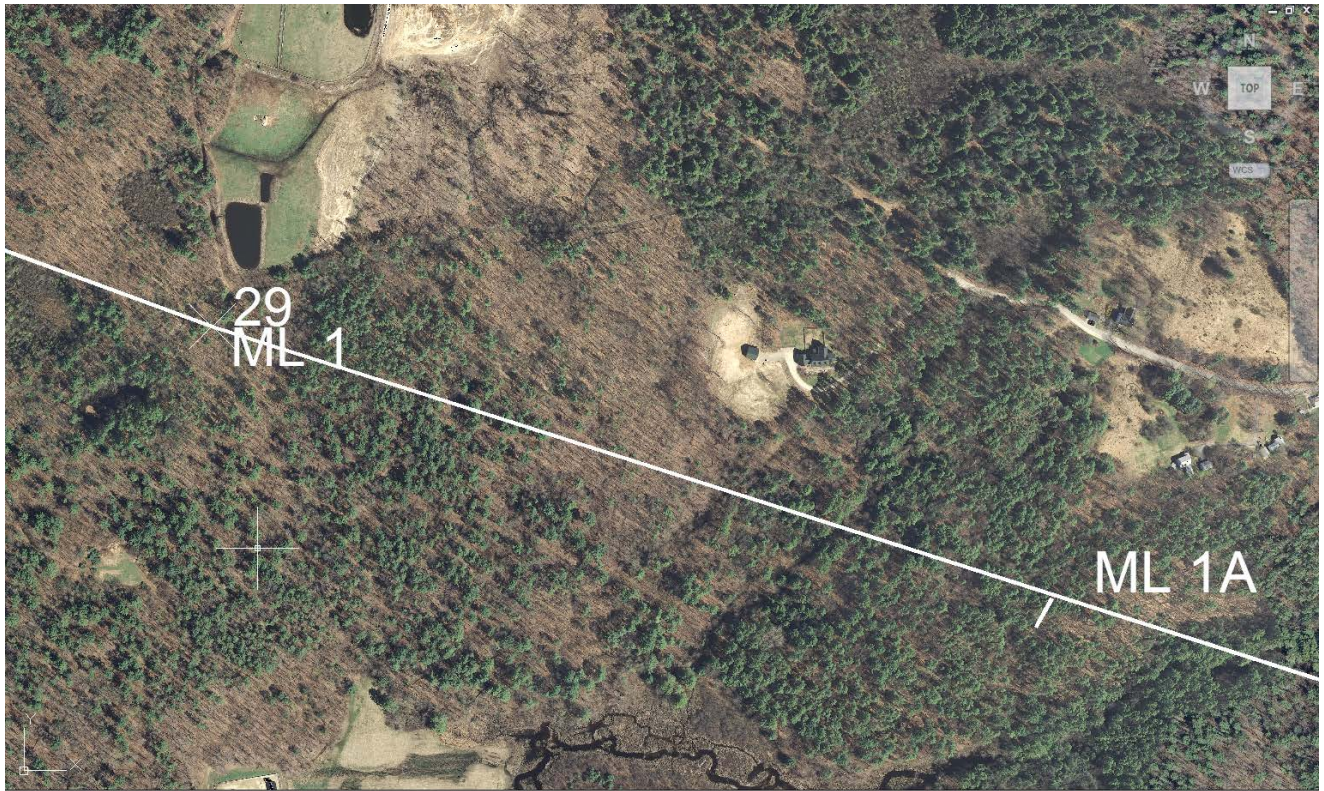
GPS Location: NHSPC NAD 83

E = 1166484.02

N = 244390.84



# ML 1





# BOUND ML 1

2004 photos





# BOUND ML 1

2011 photos





# BOUND ML 2

Date: August 17, 2011

Latitude = 43° 10' 17.9"

Longitude = 70° 59' 40.8" W

Stone ML 2



Scale 1" = 1000'

Estimated Location: NHSPC NAD 83

E = 1163713.93

N = 245424.86

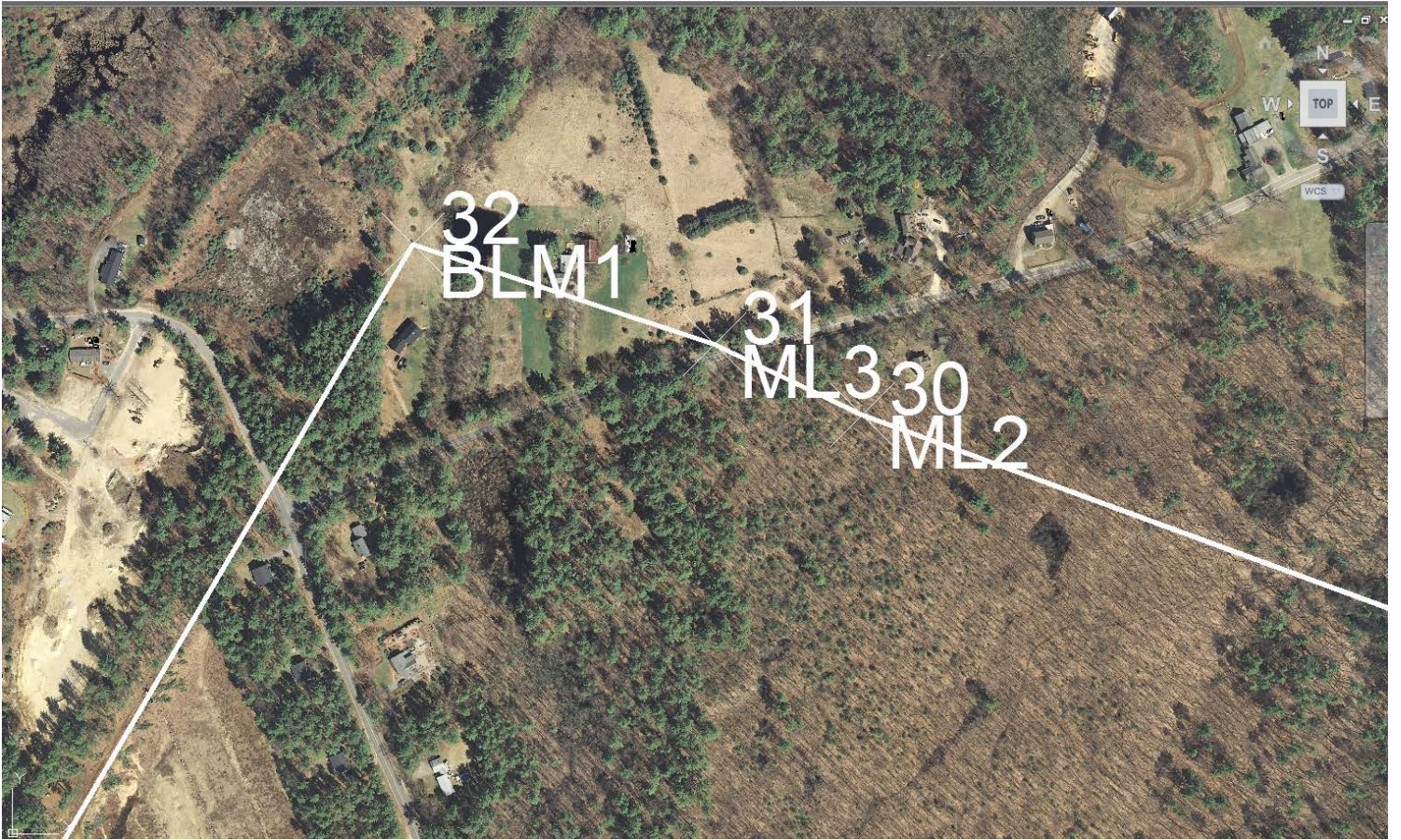
GPS Location: NHSPC NAD 83

E = 1163622.32

N = 245440.93



# BOUND ML 2





# BOUND ML 2

2004 photos





# BOUND ML 2

2011 photos





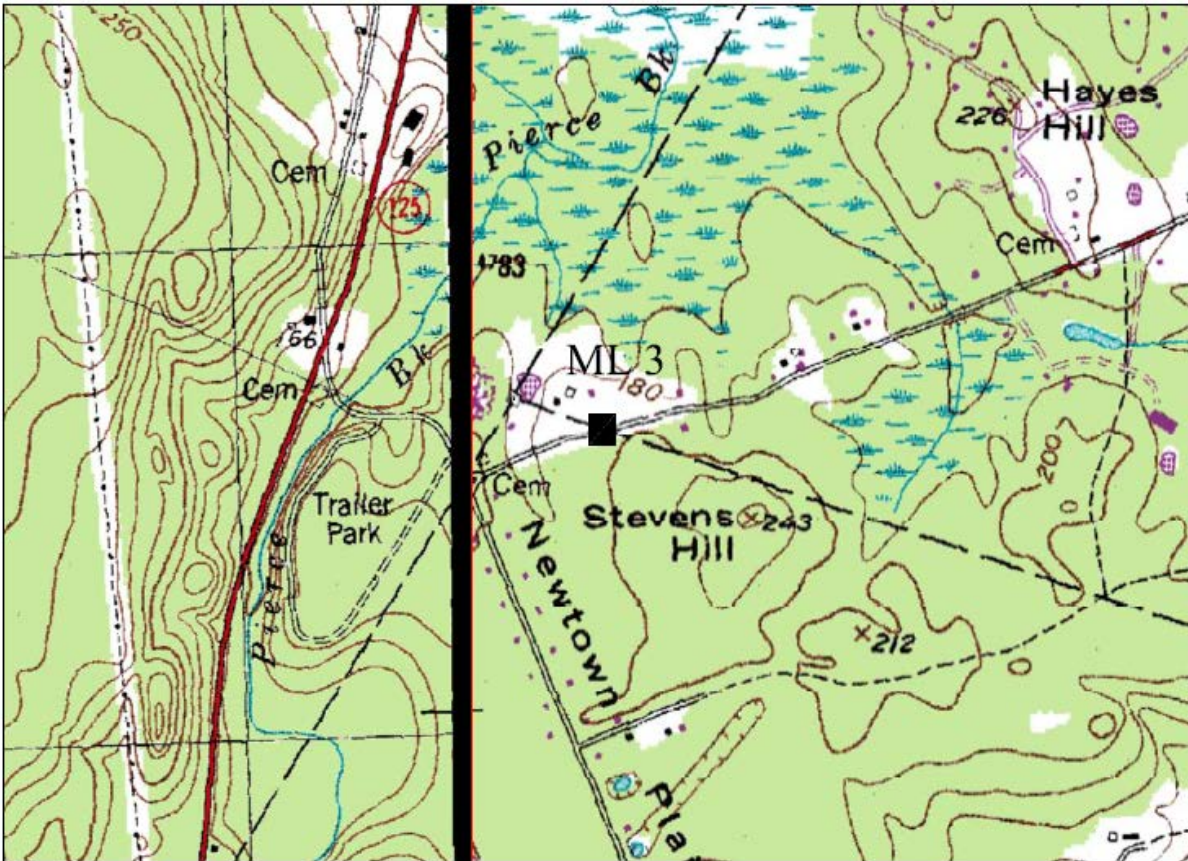
# BOUND ML 3

Date: August 17, 2011

Latitude = 43° 10' 19"

Longitude = 70° 59' 44" W

Stone ML 3



Scale 1" = 1000'

Estimated Location: NHSPC NAD 83

E = 1163218.03

N = 245577.25

GPS Location: NHSPC NAD 83

E = 1163287.56

N = 245600.25



# BOUND ML 3

2004 photos





# BOUND ML 3

2011 photos



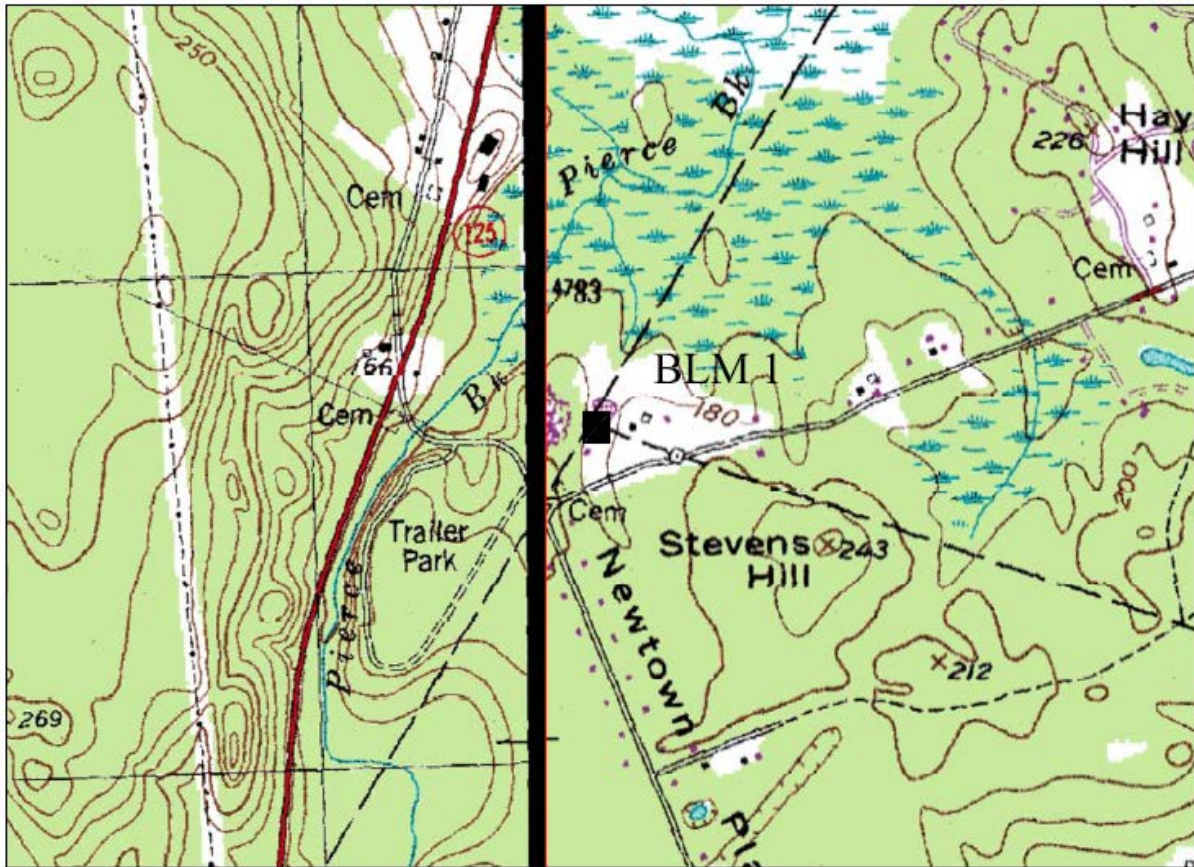
# BOUND BLM 1

Date: August 17, 2011

Latitude = 43° 10' 20.1"

Longitude = 70° 59' 53.3" W

Stone BLM 1





# BOUND BLM 1

2004 photos





# BOUND BLM 1

2011 photos





# COPY OF 1984 PERAMBULATION

TOWN OF LEE, N.H.

## PERAMBULATION OF THE LINES BETWEEN THE TOWNS OF LEE AND MADBURY

We, the Selectmen of the above named towns, met on the fifteenth day of October 1983 to perambulate the Town bounds between Madbury and Lee, and renewing marks and bounds according to law.

We began approximately 1,000 feet southwesterly from the Robert Lambert residence on highway Route 155 and proceeded along an old woods road on the westerly side of said highway for a distance of about 1,000 feet to a stone marked 1866, 1948, 1955, 1969 on land now owned by Richard Schreiber, being the same corner bound between Lee, Madbury, and Durham. (A flat stone marker with M on one side and D & L on the other is located about  $6\frac{1}{2}$  feet from first mentioned stone.)

We began at the above named stone, thence northerly  $57^{\circ}35'$  west 220 rods to a stone marked L.M. in the so-called Dube pasture on land now owned by Robert Houston Jr. about 300 feet south of the old cemetery; thence same course 161 rods to a rock marked L.M. in the stone wall on the south side of the Cherry Lane road by the land of Nehemiah Snell and/or Pamela Manning and opposite the old road leading to the formerly so-called Emerson Road now Hayes Road; thence on the same course 180 rods 15 links to a rock marked M.L. near the Hayes Road; thence same course 22 rods 5 links to a rock near the stone wall on the northwesterly side of the Hayes Road leading from Madbury to Barrington marked M.L.; thence same course 42 rods 181 links to a station in the field on land now owned by Richard Jordan Jr. marked L.M.B., 1857, 1885, 1955, which is the established corner between the towns of Barrington, Lee and Madbury.

All bounds marked with a blue paint.

IN WITNESS WHEREOF WE HAVE SET OUR HAND THIS \_\_\_\_\_ DAY OF

\_\_\_\_\_ 1983.

\_\_\_\_\_  
*Sylvia H. Grimes*  
\_\_\_\_\_

SELECTMEN OF MADBURY

Received and recorded this

4<sup>th</sup>

day of May, 1984, 1983.

Book

9

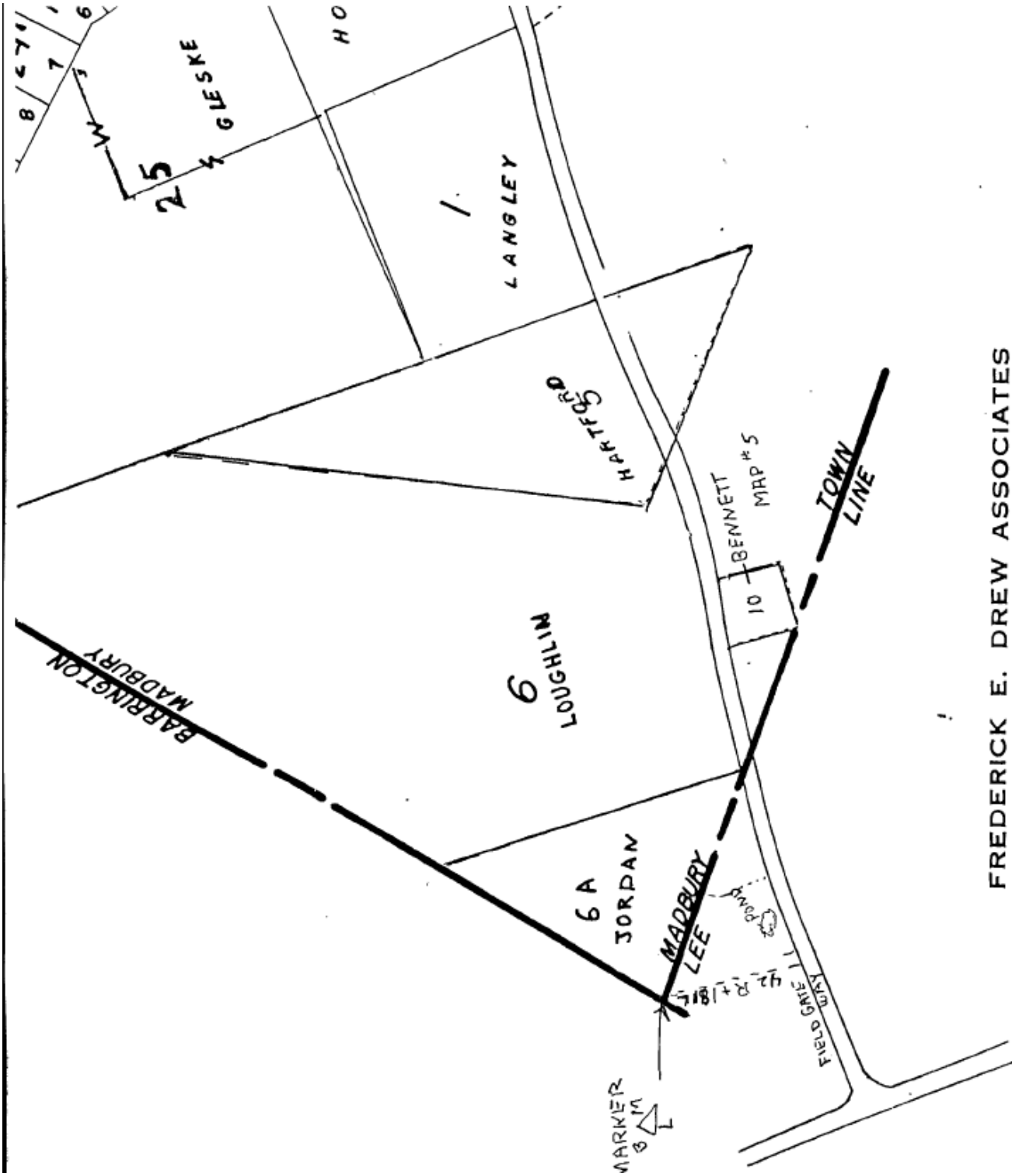
Page 35

\_\_\_\_\_  
*Shirley Clark*  
*Joseph P. Ford*  
*Wallace E. Dennis*  
\_\_\_\_\_

SELECTMEN OF LEE

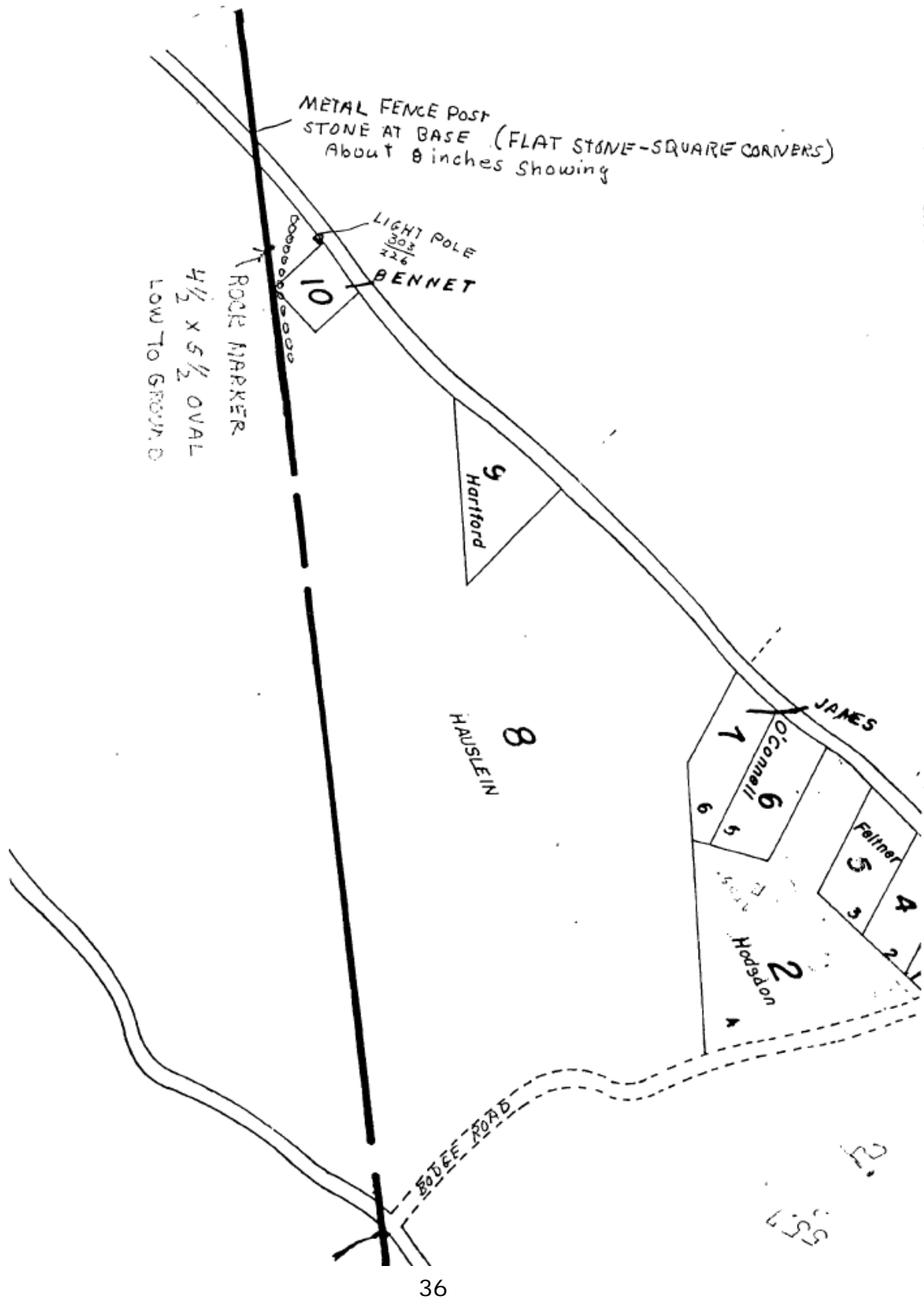
\_\_\_\_\_  
*Penelope A. Sutton*  
TOWN CLERK OF LEE

FROM 1984 PERAMBULATION (BLM 1)



FREDERICK E. DREW ASSOCIATES  
ENGINEERING  
LAND SURVEYS  
CHERRY LANE  
MADBURY, N. H.

FROM 1984 PERAMBULATION (ML 3 and ML 2)

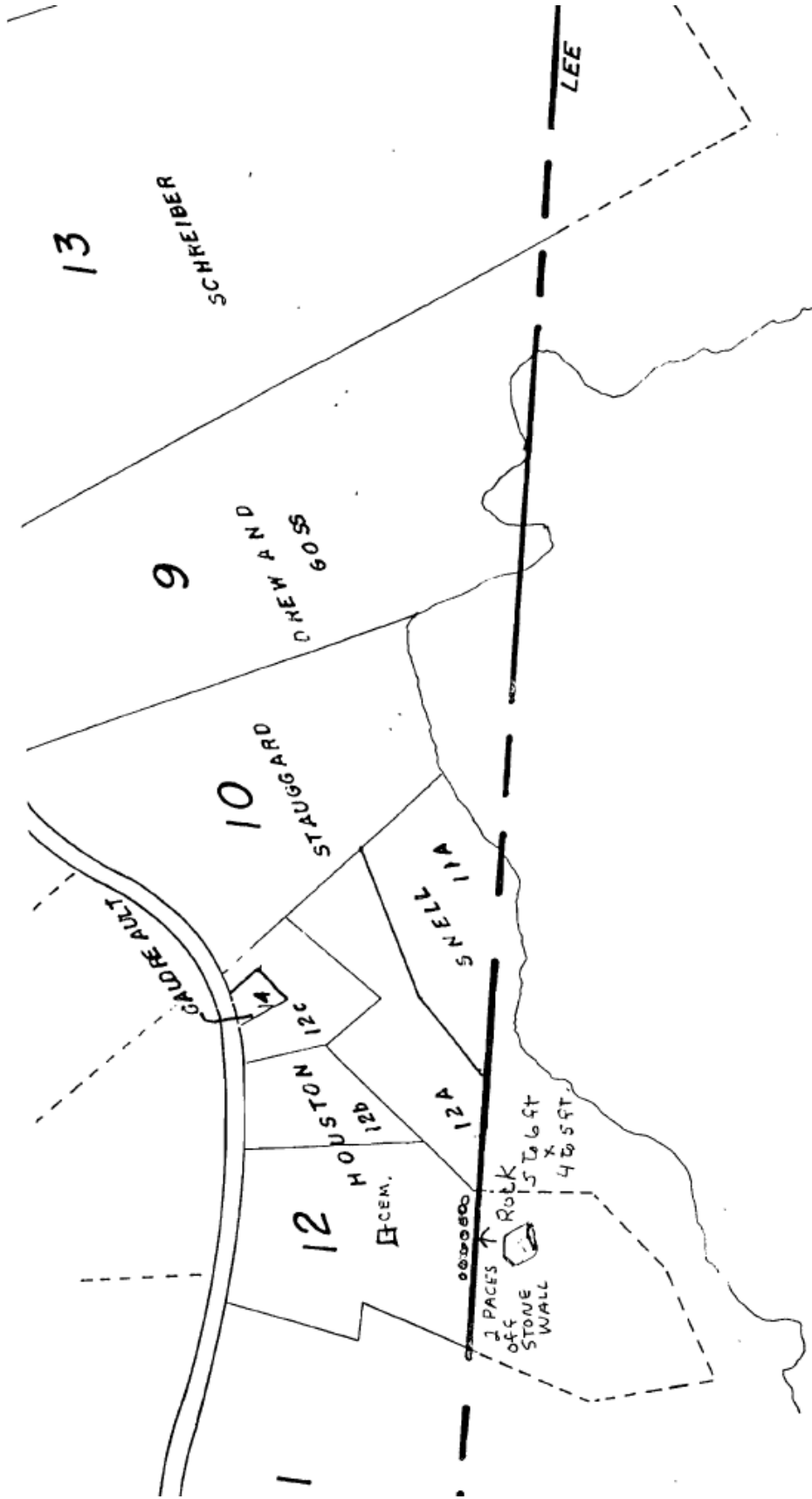








FROM 1984 PERAMBULATION (ML 1A)



TOWN of  
LEE







## TABLE OF BOUNDS AND POSITIONS

Bound Designation	2011										
	Collected in 2004 and 2005					Collected at August 17, 2011 Perambulation					
	NAD 83 NH State Plane Coordinates	WGS84 Lat. & Long		WGS84 Lat. & Long		WGS84 Lat. & Long		WGS84 Lat. & Long		Perambulation Description	
N	E	US Survey Feet	Latitude	Longitude	Latitude	Longitude	Latitude	Longitude	Latitude	Longitude	Perambulation Description
MLD1	242456.61	1172547.82	43 09 47.1	70 57 39.3	43 09 46.5	70 57 38.9					Parked on west side of Rt 155 at woods road Stone out in woods on north side RT 155 accessed by logging road There is another smaller marked stone to the SE @ 6 ft.
ML1A	243620.24	1168817.48	43 09 58.9	70 58 29.5	43 09 58.9	70 58 29.5					Large almost flush stone near corner of stone wall
ML1	244390.84	1166484.02	43 10 06.7	70 59 00.9	43 10 07.7	70 59 00					Low marked stone in stone wall near large pine tree
ML2	245440.93	1163622.32	43 10 17.3	70 59 39.4	43 10 17.9	70 59 40.8					A 4 by 6 ft stone about 1 ft above ground at high point in terrain
ML3	245600.25	1163287.56	43 10 18.9	70 59 43.9	43 10 19.0	70 59 44.0					Along side of Hayes road at town marker
BLM1	245827.66	1162603.96	43 10 21.2	70 59 53.1	43 10 20.1	70 59 53.3					In cedar bush in lawn







# Portion of 1893 USGS Topographic Map

