

Natural Services Network (NSN) I93/CTAP Towns

THE BUILDING BLOCKS

Water Supply Lands
 Water Supply Lands

Flood Storage Lands
 Flood Storage Lands

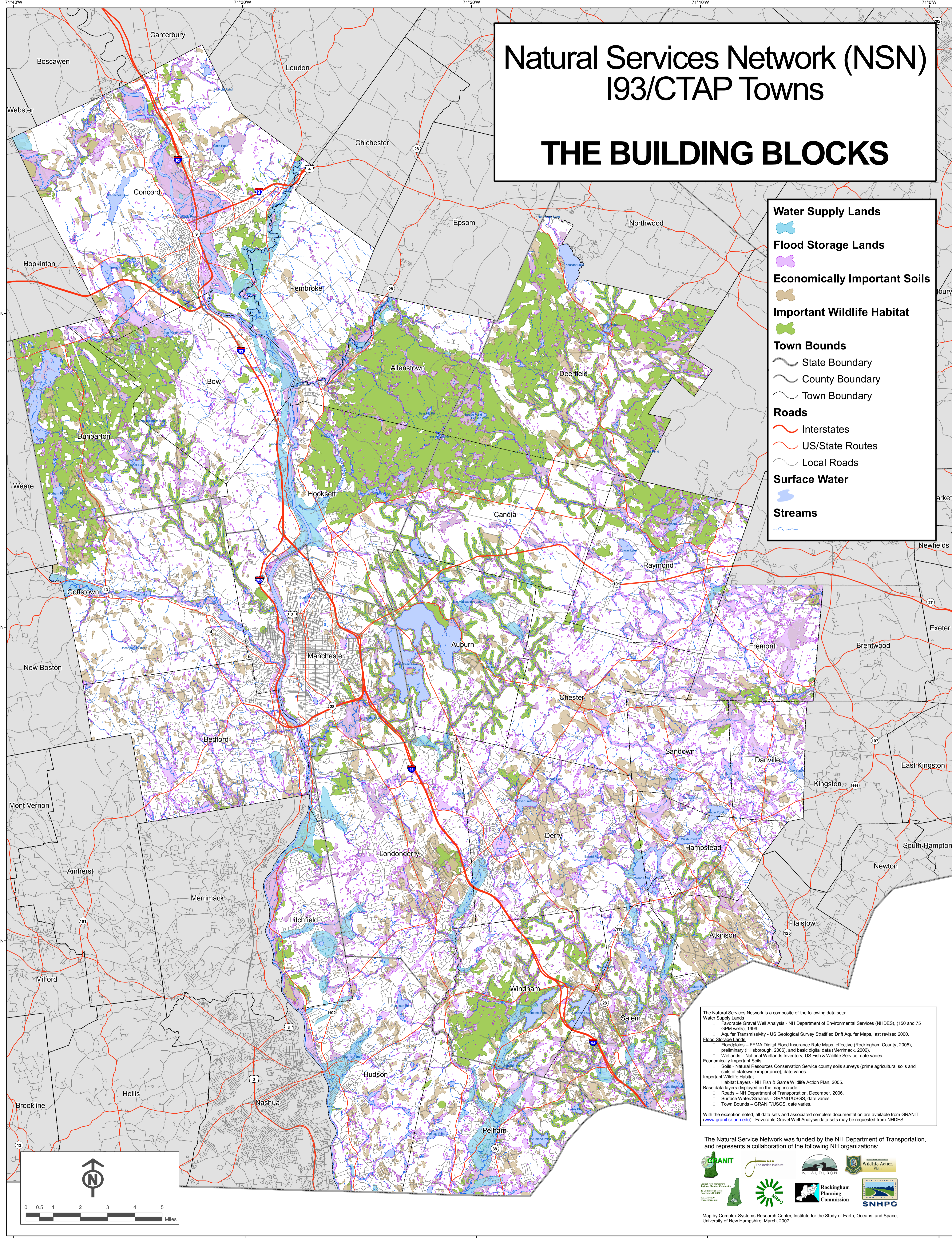
Economically Important Soils
 Economically Important Soils

Important Wildlife Habitat
 Important Wildlife Habitat

Town Bounds
 State Boundary
 County Boundary
 Town Boundary

Roads
 Interstates
 US/State Routes
 Local Roads

Surface Water
 Streams



The Natural Services Network is a composite of the following data sets:

Water Supply Lands

- Favorable Gravel Well Analysis - NH Department of Environmental Services (NHDES), (150 and 75 CPM wells), 1999
- Aquifer Transmissivity - US Geological Survey Stratified Drift Aquifer Maps, last revised 2000.

Flood Storage Lands

- Floodplains - FEMA Digital Flood Insurance Rate Maps, effective (Rockingham County, 2005), preliminary (Hillsborough, 2006), and basic digital data (Merrimack, 2006).
- Wetlands - National Wetlands Inventory, US Fish & Wildlife Service, date varies.

Economically Important Soils

- Soils - Natural Resources Conservation Service county soils surveys (prime agricultural soils and soils of statewide importance), date varies.

Important Wildlife Habitat

- Habitat Layers - NH Fish & Game Wildlife Action Plan, 2005.

Base data layers displayed on the map include:

- Roads - NH Department of Transportation, December, 2006.
- Surface Water/Streams - GRANIT/USGS, date varies.
- Town Bounds - GRANIT/USGS, date varies.

With the exception noted, all data sets and associated complete documentation are available from GRANIT (www.granit.unh.edu). Favorable Gravel Well Analysis data sets may be requested from NHDES.

The Natural Service Network was funded by the NH Department of Transportation, and represents a collaboration of the following NH organizations:



Map by Complex Systems Research Center, Institute for the Study of Earth, Oceans, and Space, University of New Hampshire, March, 2007.

