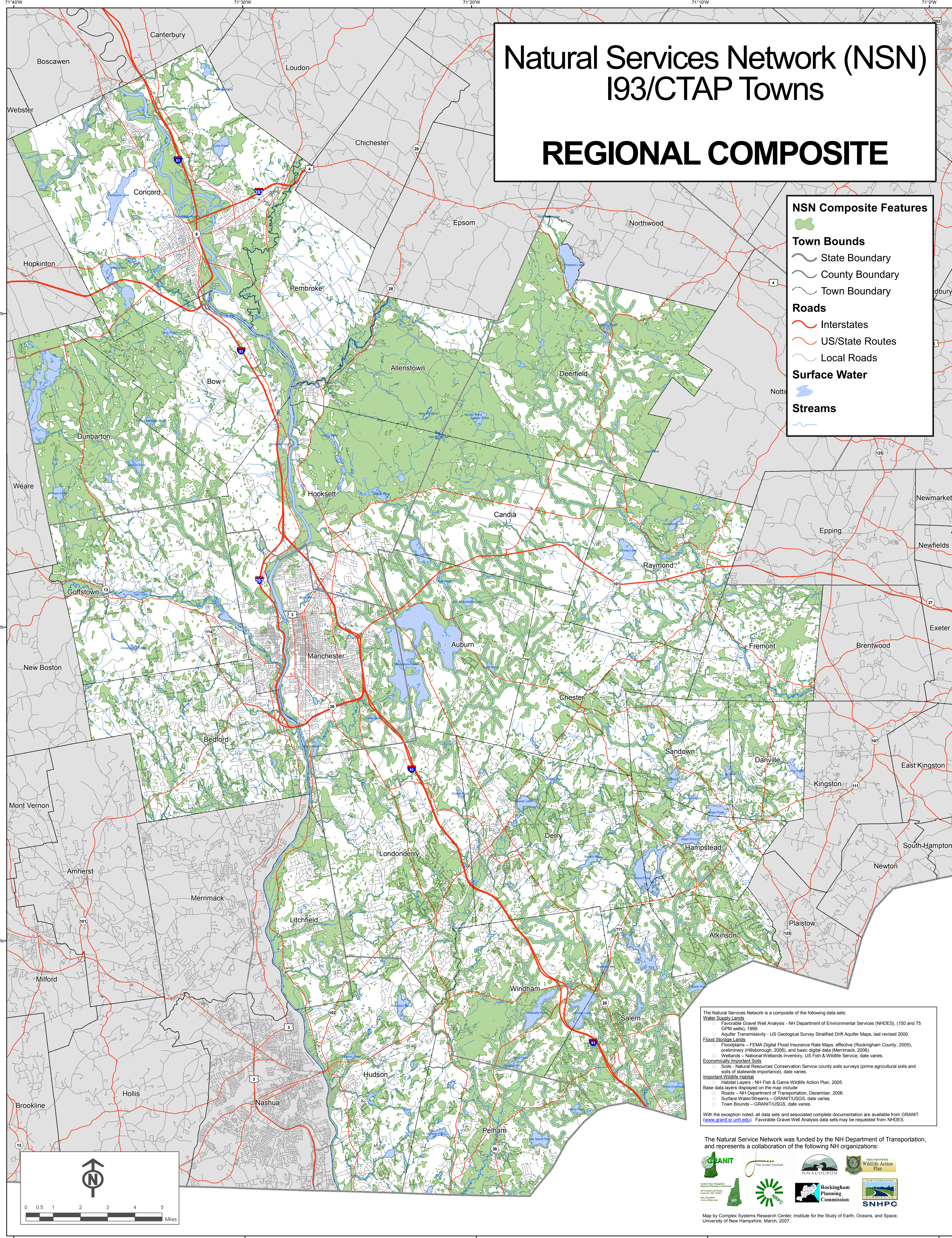


# Natural Services Network (NSN) I93/CTAP Towns

## REGIONAL COMPOSITE

**NSN Composite Features**

- Town Bounds**
- State Boundary
- County Boundary
- Town Boundary
- Roads**
  - Interstates
  - US/State Routes
  - Local Roads
- Surface Water**
  - Lakes
  - Streams



The Natural Services Network is a composite of the following data sets:

- Water Supply Lands**
  - Favorable Gravel Well Analysis - NH Department of Environmental Services (NHDES), (150 and 75 CPM wells), 1999
  - Aquifer Transmissivity - US Geological Survey Stratified Drift Aquifer Maps, last revised 2000.
- Flood Storage Lands**
  - Floodplains - FEMA Digital Flood Insurance Rate Maps, effective (Rockingham County, 2005), preliminary (Hillsborough, 2006), and basic digital data (Merrimack, 2006).
  - Wetlands - National Wetlands Inventory, US Fish & Wildlife Service, date varies.
- Economically Important Soils**
  - Soils - Natural Resources Conservation Service county soils surveys (prime agricultural soils and soils of statewide importance), date varies.
- Important Wildlife Habitat**
  - Habitat Layers - NH Fish & Game Wildlife Action Plan, 2005.

Base data layers displayed on the map include:

- Roads - NH Department of Transportation, December, 2006.
- Surface Water/Streams - GRANIT/USGS, date varies.
- Town Bounds - GRANIT/USGS, date varies.

With the exception noted, all data sets and associated complete documentation are available from GRANIT ([www.granit.unh.edu](http://www.granit.unh.edu)). Favorable Gravel Well Analysis data sets may be requested from NHDES.

The Natural Service Network was funded by the NH Department of Transportation, and represents a collaboration of the following NH organizations:



Map by Complex Systems Research Center, Institute for the Study of Earth, Oceans, and Space, University of New Hampshire, March, 2007.

