

Isinglass River Watershed



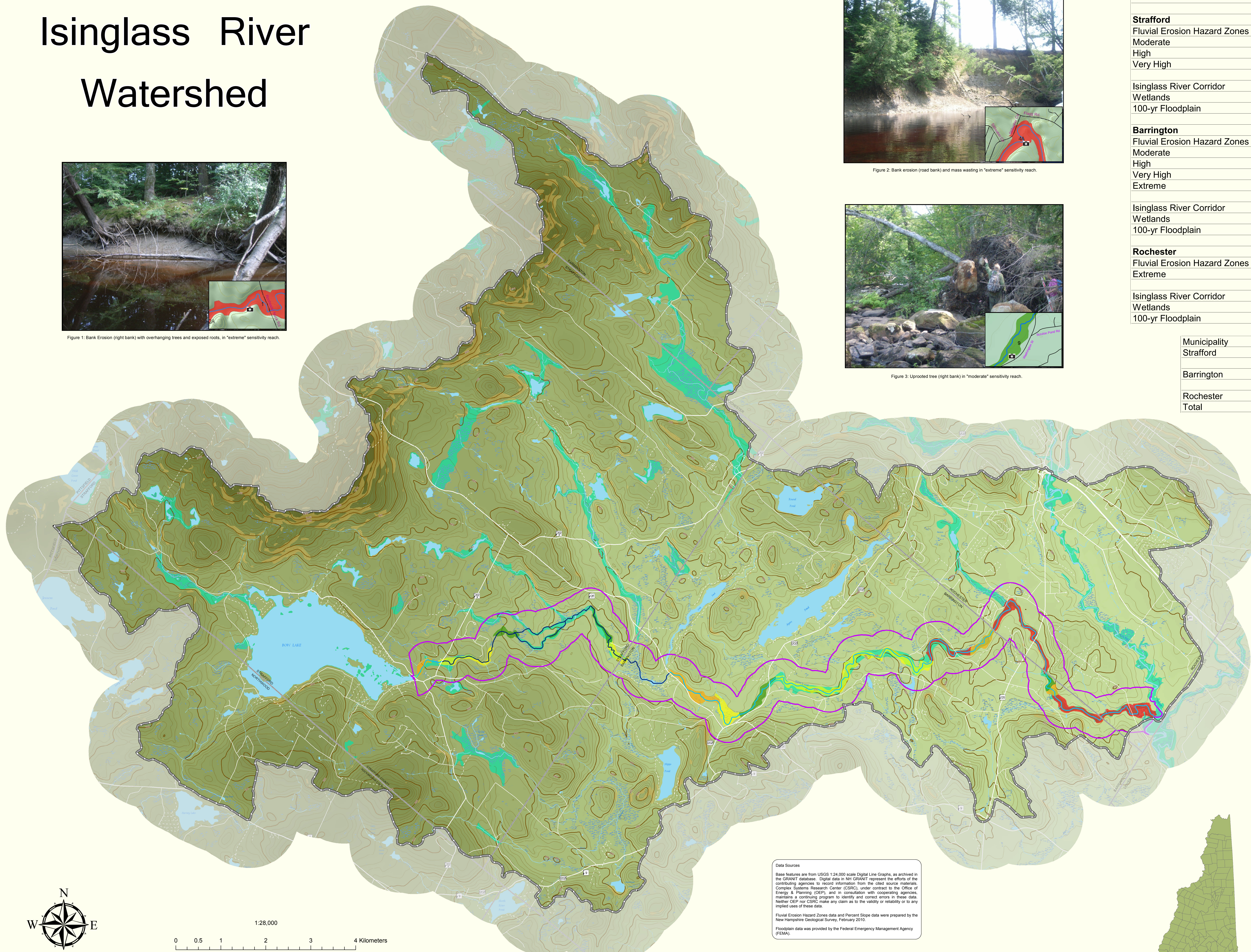
Figure 1: Bank Erosion (right bank) with overhanging trees and exposed roots, in "extreme" sensitivity reach.



Figure 2: Bank erosion (road bank) and mass wasting in "extreme" sensitivity reach.



Figure 3: Uprooted tree (right bank) in "moderate" sensitivity reach.



	Corridor Acres	Watershed Acres
Strafford		
Fluvial Erosion Hazard Zones		
Moderate	40.6	40.6
High	55.5	55.5
Very High	14.9	14.9
Isinglass River Corridor	1342.2	1342.2
Wetlands	167.7	1609.5
100-yr Floodplain	161.2	2655.8
Barrington		
Fluvial Erosion Hazard Zones		
Moderate	42.7	42.7
High	185.7	185.7
Very High	83.7	83.7
Extreme	74.4	74.4
Isinglass River Corridor	2611.8	2611.8
Wetlands	271.5	1290.8
100-yr Floodplain	302.9	314.6
Rochester		
Fluvial Erosion Hazard Zones		
Extreme	125.8	125.8
Isinglass River Corridor	795.8	795.8
Wetlands	63.5	385.1
100-yr Floodplain	123.9	7078.5

Municipality	River Segments	Length (miles)
Strafford	Rural	0.5
	Natural	4.8
Barrington	Rural	8.2
	Natural	1
Rochester	Rural	2.9
Total		17.4

Legend

- Municipal Boundary
- Watershed Boundary
- 20ft Contours
- >25% Slope
- Designated River Corridor

Fluvial Erosion Hazard Zones

Rating

- Moderate
- High
- Very High
- Extreme

Isinglass River Designation

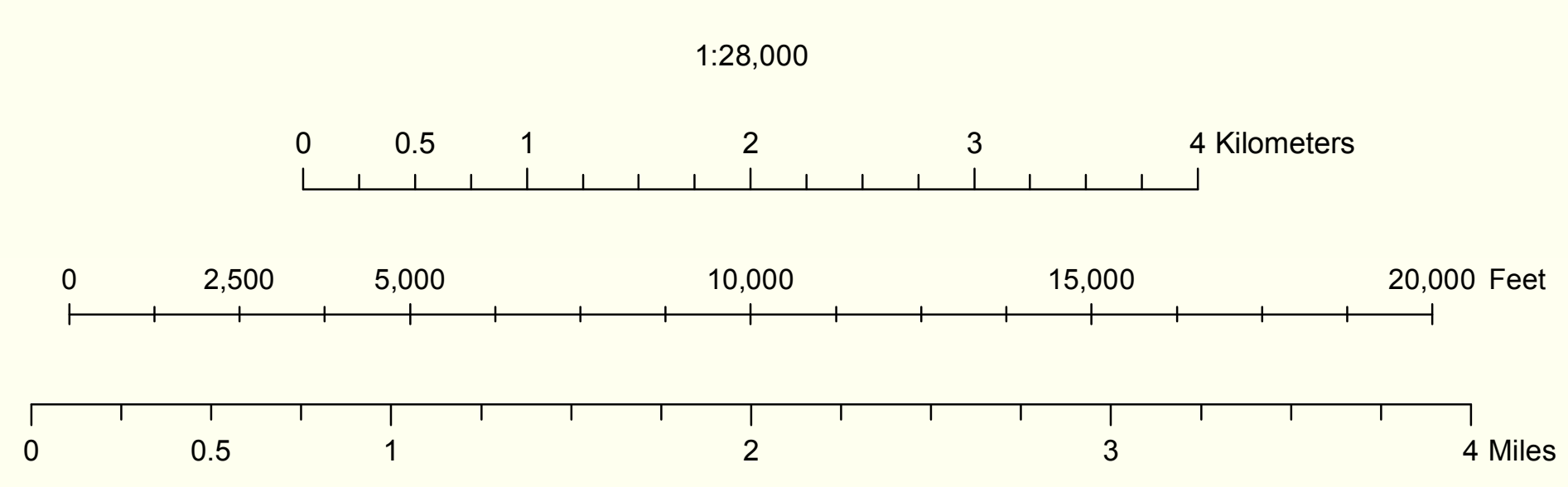
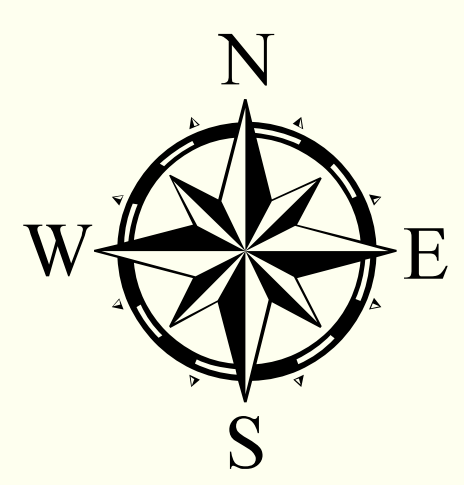
- Natural
- Rural

Surface Water Features

- Intermittent Stream
- Perennial Stream
- Lake, Pond, River
- NWI Wetland
- 100-yr Floodplain

Roads

- State
- Local
- Private



Data Sources

Base features are from USGS 1:24,000 scale Digital Line Graphs, as archived in the GRANIT database. Digital data in NH GRANIT represent the efforts of the contributing agencies to record information from the cited source materials. Complex Systems Research Center (CSRC), under contract to the Office of Energy & Planning (OEP), and in consultation with cooperating agencies, maintains a continuing program to identify and correct errors in these data. Neither OEP nor CSRC make any claim as to the validity or reliability or to any implied uses of these data.

Fluvial Erosion Hazard Zones data and Percent Slope data were prepared by the New Hampshire Geological Survey, February 2010.

Floodplain data was provided by the Federal Emergency Management Agency (FEMA).

Prepared by Strafford Regional Planning Commission
 2 Ridge Street, Suite 4, Dover, NH 03820
 T: 603.742.5273 F: 603.742.7989 Em: srgp@strafford.org
 Isinglass River Watershed
 Distribution April 2010 1:28,000
 Path: G:\Region\644b\2009\Isinglass_RMP\DrainageMap.mxd

Map prepared by Strafford Regional Planning Commission
 for planning purposes only.

